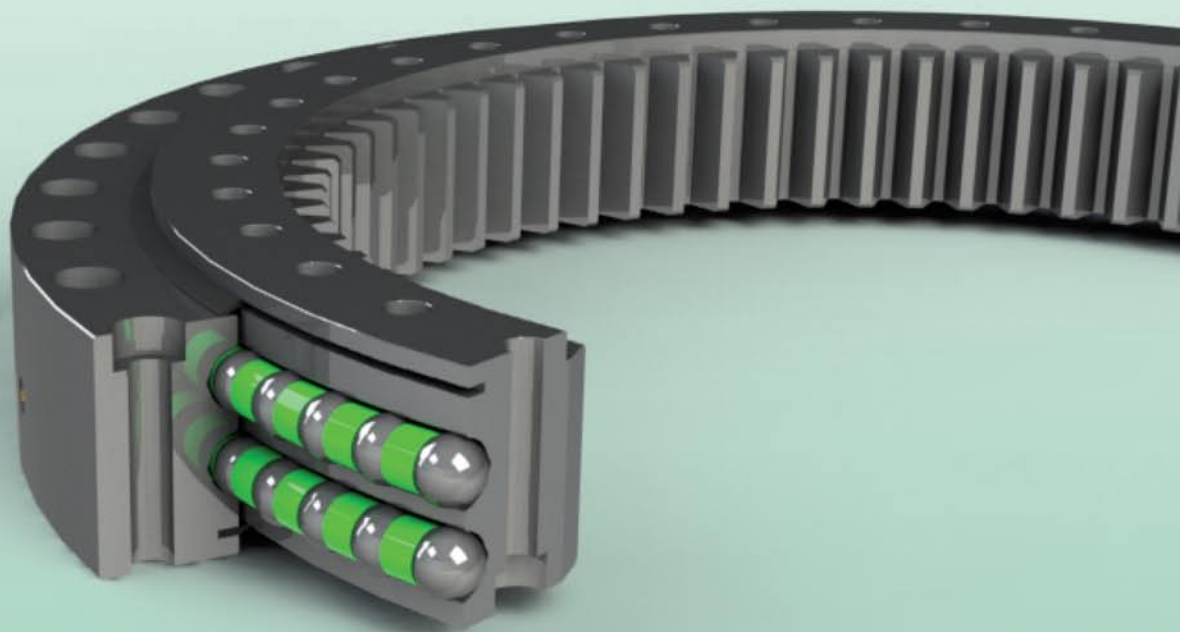


**Roulements d'orientation à deux rangées de billes, denture intérieure**

*Double row ball bearing, internal toothed*

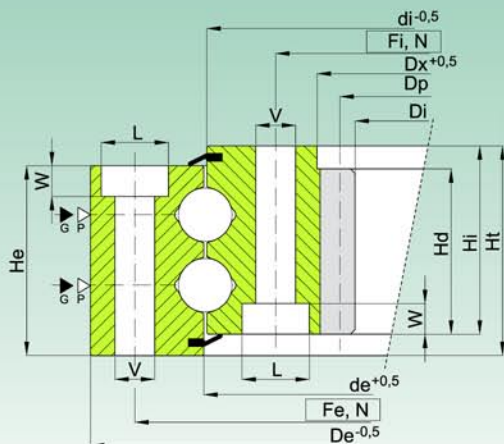


**ZB2** SERIES

ZB2

## SÉRIE STANDARD

STANDARD SERIES



Code Code	Courbe Curve	Dimensions Dimensions								Trous de fixation Fixing Holes						Denture Gear data				Poids Weight			
		De [mm]	de [mm]	di [mm]	Di [mm]	Dx [mm]	He [mm]	Hi [mm]	Ht [mm]	Hd [mm]	Fe [mm]	Fi [mm]	N [-]	V [mm]	L [mm]	W [mm]	m [mm]	Z [-]	xm [mm]		Dp [mm]	fz norm [kN]	fz max [kN]
ZB2.22.0625.400-1SPPN	1	705	627	623	504	547	83	83	92	74	675	575	32	17	25	9	8	65	-	520	49,33	98,67	95
ZB2.22.0763.400-1RPPN	2	850	765	761	641	-	83	83	92	83	820	705	36	17	25	17	8	81	-4	648	64,15	128,31	128
ZB2.20.0897.200-1SPPN	3	973	899	895	786	820	88	88	97	80	944	850	36	17	25	11	8	100	-	800	45,33	90,67	141
ZB2.22.0885.400-1SPPN	4	982	887	883	754	790	88	88	97	80	944	826	36	21	31	14	8	95	-4	760	61,84	123,67	170
ZB2.25.0972.400-1SPPN	5	1074	974	970	820	-	100	96	114	96	1035	910	40	21	-	-	10	84	-	840	76	152	234
ZB2.22.1088.200-1SPPN	6-a	1172	1090	1085	962	1010	88	88	97	80	1134	1040	36	17	25	11	10	98	-	980	56,67	113,33	193
ZB2.22.1088.201-1SPPN	6-b	1172	1090	1085	962	1010	88	88	97	80	1134	1040	48	17	25	11	10	98	-	980	56,67	113,33	189
ZB2.22.1088.400-1SPPN	6-a	1172	1090	1085	962	1010	88	88	97	80	1134	1040	36	17	25	11	10	97	-5	970	77,29	154,59	193
ZB2.25.1103.200-1SPPN	7	1200	1105	1099	963	1010	96	96	110	88	1160	1040	36	21	31	12	10	98	-	980	62,33	124,67	239

- Matériau: .400:=42CrMo4 Q+T / .200=C45 Q+T

- Possibilité de denture trempée (-1RPPN)

▷ P=bouchon introduction billes / filling plug

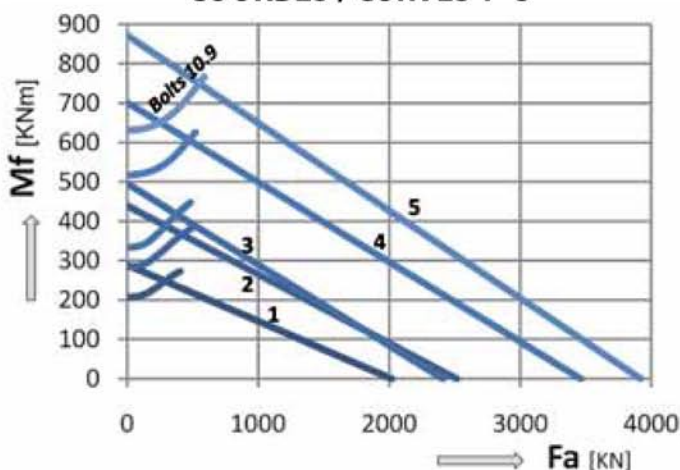
▷ G= n.2+2 graisseurs M8X1 / n.2+2 greasers M8X1.

- Material: .400:=42CrMo4 Q+T / .200=C45 Q+T

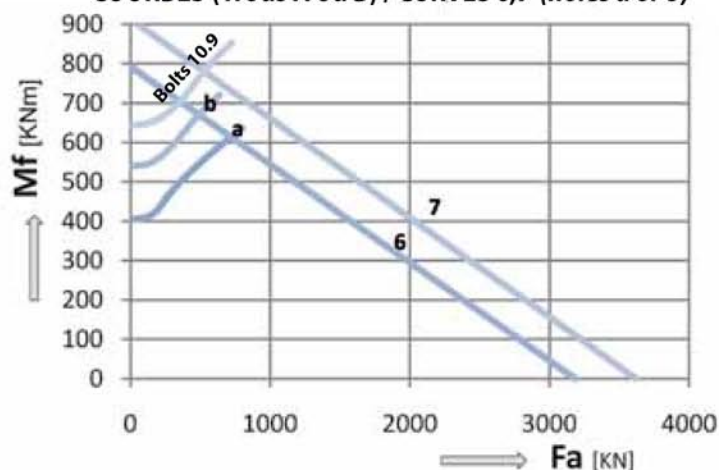
- Induction gear hardening available on request (-1RPPN)

DIAGRAMME DE CHARGE STATIQUE POUR CONTRAINTES DE COMPRESSION  
STATIC LOAD CHARTS VALID FOR COMPRESSIVE LOADS

## COURBES / CURVES 1~5



## COURBES (Trous A ou B) / CURVES 6,7 (holes a or b)

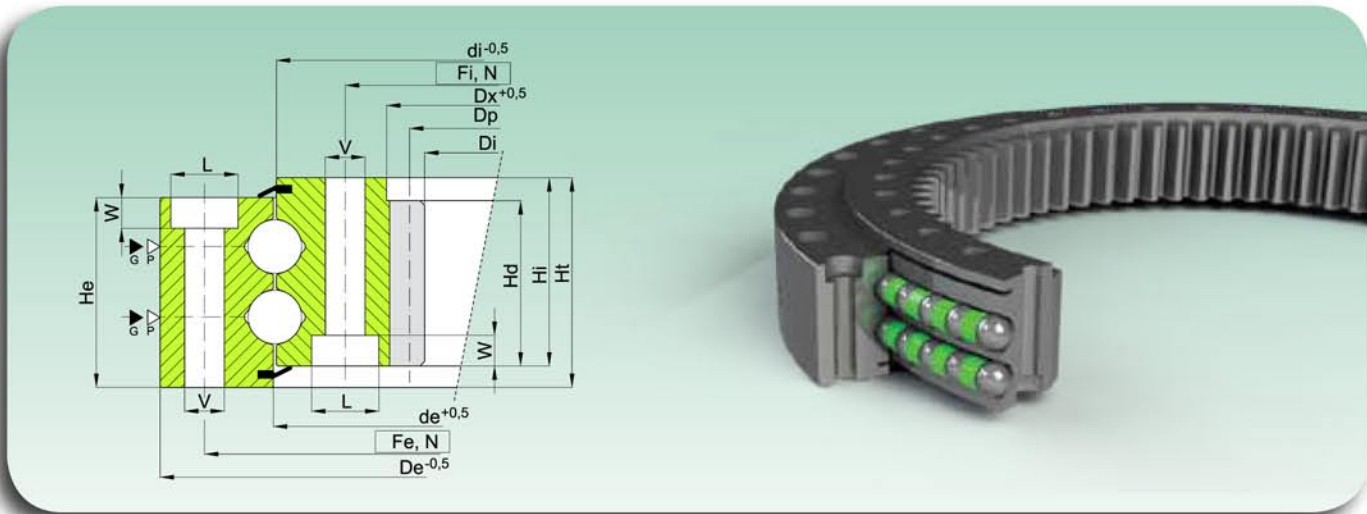


Lire les instructions techniques - partie 2 - pour l'utilisation correcte du graphique - Please read technical instruction - part 2 - for correct use of load graph.

# ZB2

## SÉRIE STANDARD

### STANDARD SERIES



Code Code	Courbe Curve	Dimensions Dimensions									Trous de fixation Fixing Holes						Denture Gear data					Poids Weight [kg]	
		De [mm]	de [mm]	di [mm]	Di [mm]	Dx [mm]	He [mm]	Hi [mm]	Ht [mm]	Hd [mm]	Fe [mm]	Fi [-]	N [-]	V [mm]	L [mm]	W [mm]	m [mm]	Z [-]	xm [mm]	Dp [mm]	fz norm [kN]		fz max [kN]
ZB2.25.1103.400-1SPPN	1-a	1200	1105	1099	963	1010	96	96	110	88	1160	1040	36	21	31	12	10	98	-	980	73,33	146,67	239
ZB2.25.1103.401-1SPPN	1-b	1200	1105	1099	963	1010	96	96	110	88	1160	1040	48	21	31	12	10	98	-	980	73,33	146,67	232
ZB2.30.1143.400-1SPPN	2	1250	1147	1141	998	-	99,5	99,5	110	99,5	1208	1080	36	21	31	12	10	100	-8	1000	91,33	182,66	276
ZB2.28.1222.400-1SPPN	3-a	1345	1225	1219	1061,6	1115	98	98	108	88	1290	1150	40	21	31	16	10	108	-	1080	73,33	146,67	331
ZB2.28.1222.401-1SPPN	3-b	1345	1225	1219	1061,6	1115	98	98	108	88	1290	1150	48	21	31	16	10	108	-	1080	73,33	146,67	326
ZB2.30.1351.400-1SPPN	4-a	1470	1354	1348	1183	1230	98	98	108	90	1425	1270	40	23	34	18	10	120	-	1200	71,25	142,5	371
ZB2.30.1351.401-1SPPN	4-a	1470	1354	1348	1176	1230	98	98	108	90	1425	1270	40	23	34	18	12	100	-	1200	85,5	171	371
ZB2.30.1351.402-1SPPN	4-b	1470	1354	1348	1176	1230	98	98	108	90	1425	1270	48	23	34	18	10	120	-	1200	71,25	142,5	365
ZB2.30.1351.403-1SPPN	4-b	1470	1354	1348	1176	1230	98	98	108	90	1425	1270	48	23	34	18	12	100	-	1200	85,5	171	365

- Matériau: 42CrMo4 Q+T

- Material : 42CrMo4 Q+T

- Possibilité de denture trempée (-1RPPN)

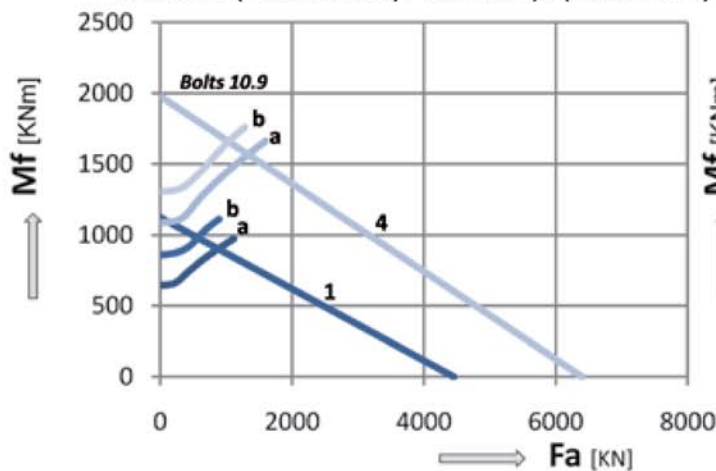
- Induction gear hardening available on request (-1RPPN)

▷ P=bouchon introduction billes / filling plug

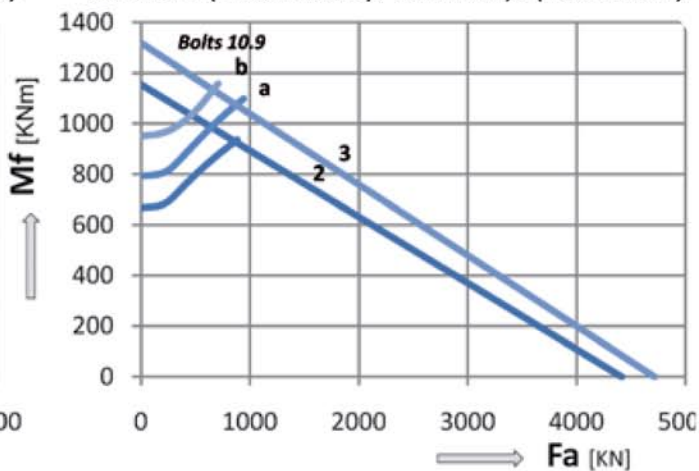
▶ G= n.2+2 graisseurs M8X1 / n.2+2 greasers M8X1.

### DIAGRAMME DE CHARGE STATIQUE POUR CONTRAINTES DE COMPRESSION STATIC LOAD CHARTS VALID FOR COMPRESSIVE LOADS

COURBES (Trous A ou B) / CURVES 1,4 (holes a or b)



COURBES (Trous A ou B) / CURVES 2,3 (holes a or b)

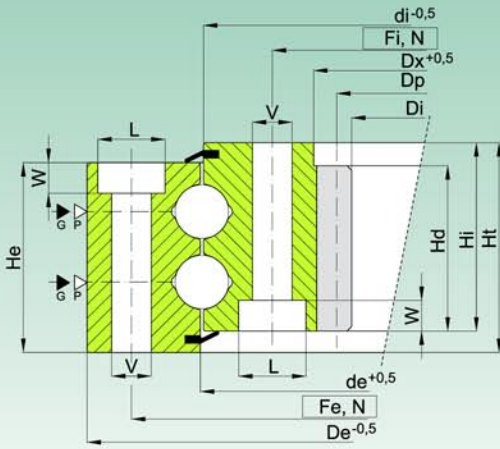


Lire les instructions techniques - partie 2 - pour l'utilisation correcte du graphique - Please read technical instruction - part 2 - for correct use of load graph.

# ZB2

## SÉRIE STANDARD

### STANDARD SERIES



Code Code	Courbe Curve	Dimensions Dimensions								Trous de fixation Fixing Holes					Denture Gear data					Poids Weight [kg]			
		De [mm]	de [mm]	di [mm]	Di [mm]	Dx [mm]	He [mm]	Hi [mm]	Ht [mm]	Hd [mm]	Fe [mm]	Fi [-]	N [mm]	V [mm]	L [mm]	W [mm]	m [mm]	Z [-]	xm [mm]		Dp [mm]	fz norm [kN]	fz max [kN]
ZB2.40.1386.400-1SPPN	1	1530	1389	1383	1186	1240	134	134	144	109	1480	1290	48	25	37	23	10	120	-3	1200	100	200	612
ZB2.40.1386.401-1SPPN	1	1530	1389	1383	1186	1240	134	134	144	119	1480	1290	48	25	37	23	12	100	-	1200	113	226	627
ZB2.30.1613.200-1SPPN	2	1750	1616	1610	1418,4	1470	110	105	120	98	1705	1525	40	25	37	23	12	120	-	1440	83,3	166,6	572
ZB2.30.1613.400-1SPPN	3	1750	1616	1610	1418,4	1470	110	105	120	98	1705	1525	48	25	37	23	12	120	-	1440	93,1	186,2	564
ZB2.45.1605.400-1SPPN	4	1780	1606	1602	1375	1438	134	134	144	124	1710	1500	48	31	46	28	14	100	-	1400	137,4	274,8	840
ZB2.45.1605.401-1SPPN	4	1780	1606	1602	1375	1382	134	134	144	124	1710	1500	48	31	46	28	12	117	-	1404	117,8	235,6	832
ZB2.35.1935.400-1SPPN	5	2100	1938	1932	1719	1774	134	134	144	120	2035	1835	72	29	-	-	12	145	-	1740	114	228	965
ZB2.35.2003.400-1SPPN	6	2178	2006	2000	1779	1835	134	134	144	120	2108	1898	72	29	-	-	12	150	-	1800	114	228	1062

- Matériau: 42CrMo4 Q+T

- Material: 42CrMo4 Q+T

- Possibilité de denture trempée (-1RPPN)

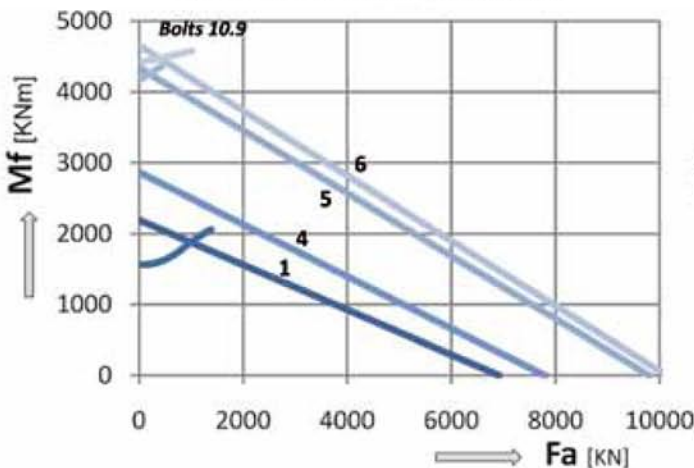
- Induction gear hardening available on request (-1RPPN)

▷ P=bouchon introduction billes / filling plug

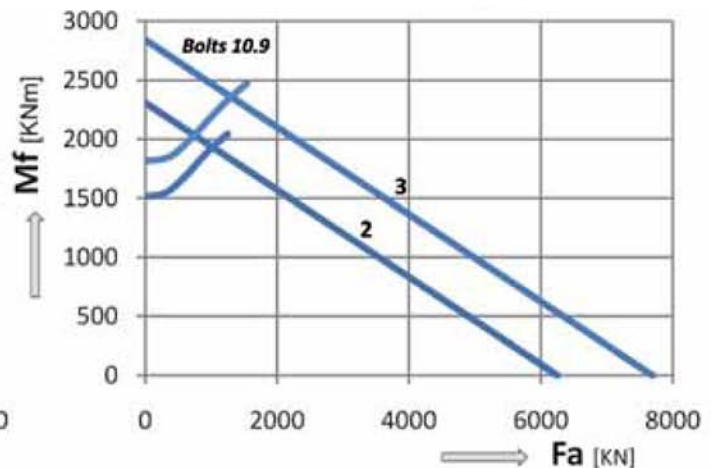
▷ G= n.2+2 graisseurs M8X1 / n.2+2 greasers M8X1.

### DIAGRAMME DE CHARGE STATIQUE POUR CONTRAINTES DE COMPRESSION STATIC LOAD CHARTS VALID FOR COMPRESSIVE LOADS

#### COURBES / CURVES 1,4,5,6



#### COURBES / CURVES 2,3



Lire les instructions techniques - partie 2 - pour l'utilisation correcte du graphique - Please read technical instruction - part 2 - for correct use of load graph.