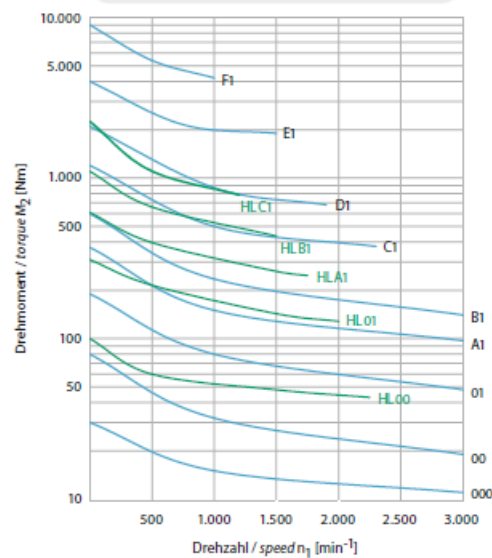
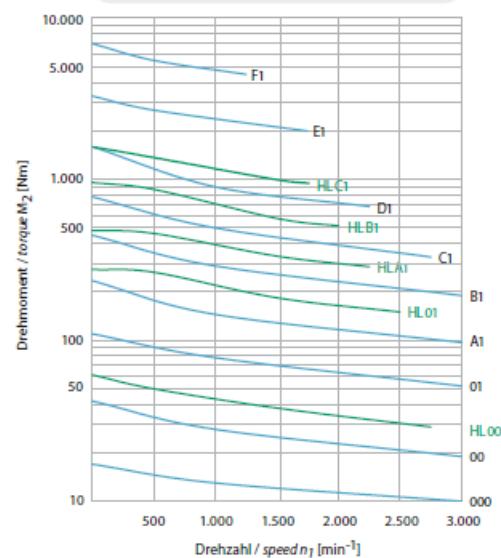


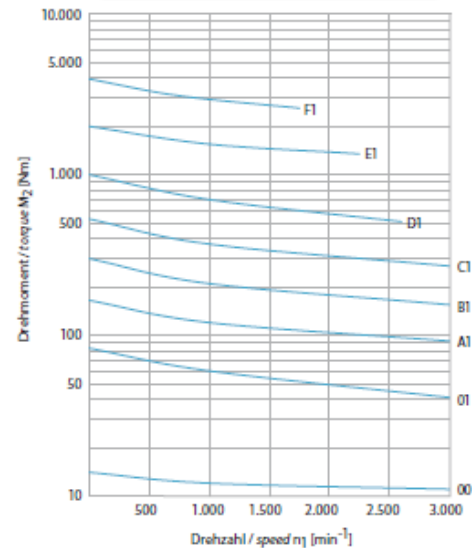
$i=n_1:n_2=1:1$ (Standard und/and HL)



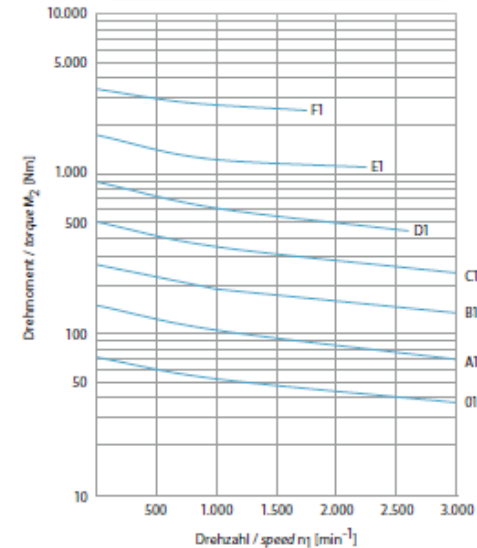
$i=n_1:n_2=2:1$ (Standard und/and HL)



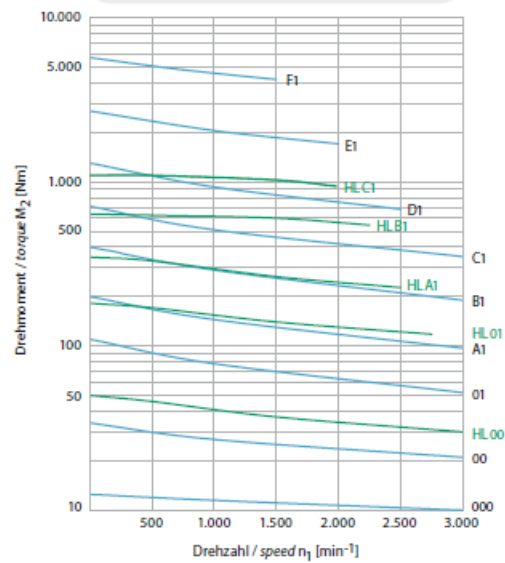
$i=n_1:n_2=5:1$ (Standard)



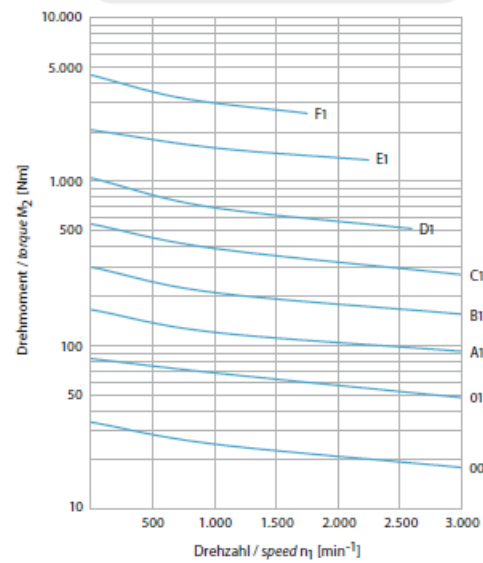
$i=n_1:n_2=6:1$ (Standard)



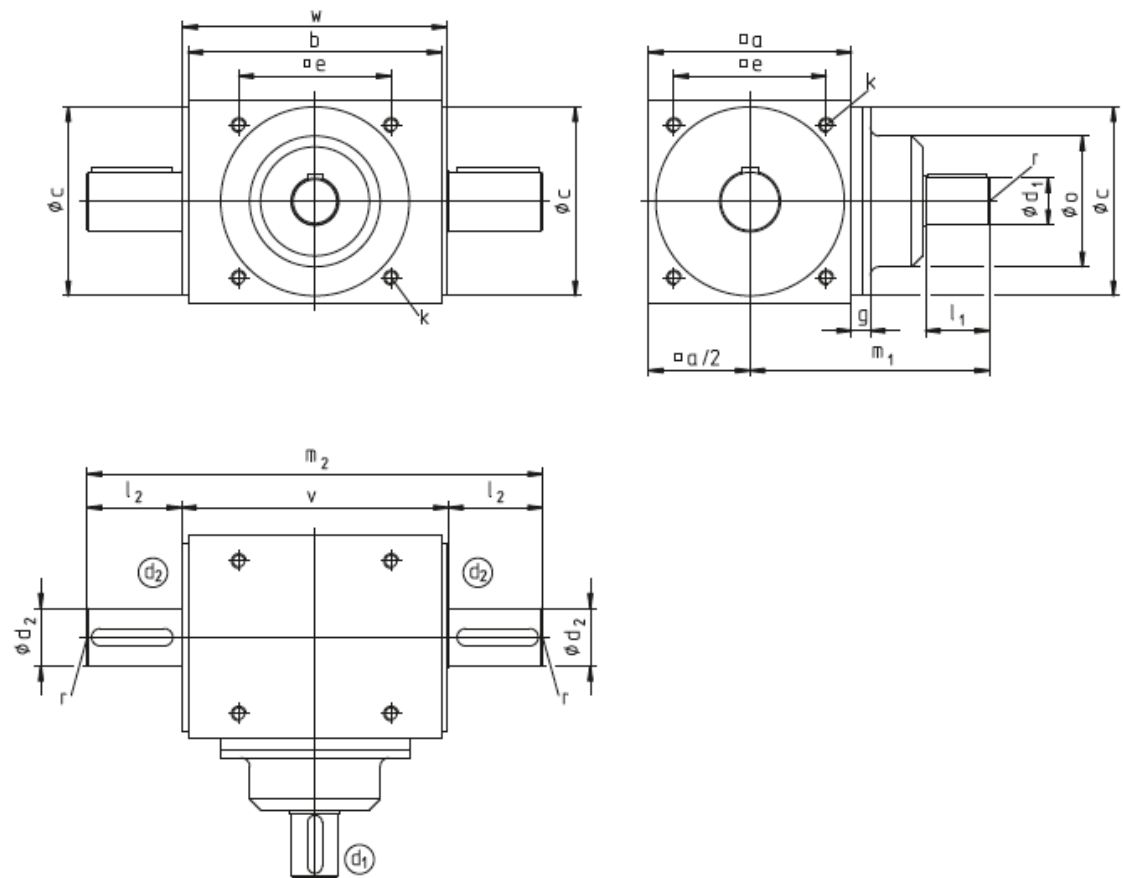
$i=n_1:n_2=3:1$ (Standard und/and HL)



$i=n_1:n_2=4:1$ (Standard)



VERSION à arbre plein traversant renforcé



Couple admissible sur l'arbre d2		
Taille	d2j6	couple sur d2
WV 00	20	150 Nm
WV 01	35	650 Nm
WVA1	40	750 Nm
WV B1	50	1400 Nm
WV C1	60	2600 Nm
WV D1	75	4300 Nm
WV E1	85	6400 Nm
WV F1	100	10000 Nm



dimensions à l'exception des rapports de réduction 1/1,75 et 1/2										dimensions arbre d2		
Type	a	b	cj7	e	k Prof = 1,5 x k	l2	m2	v	w	d2j6	r	clavette DIN 6885/1
WV 00	80	110	74	60	M6	35	187	117	115	20	M8	6 x 6
WV 01	110	145	102	82	M8	55	262	152	150	35	M10	10 x 8
WV A1	140	175	130	105	M10	65	314	184	182	40	M12	12 x 8
WV B1	170	215	160	130	M12	80	384	224	222	50	M16	14 x 9
WV C1	210	260	195	160	M16	95	460	270	268	60	M16	18 x 11
WV D1	260	330	245	200	M16	115	570	340	338	75	M20	20 x 12
WV E1	330	430	310	260	M20	130	700	440	438	85	M20	22 x 14
WV F1	400	530	380	320	M24	160	860	540	538	100	M24	28 x 16

dimensions arbre d1 1/1 1,25/1 1,5/1 1,75/1 2/1 2,5/1							
Type	g	l1	m1	o	d1j6	r	clavette DIN 6885/1
WV 00	13	30	110	52	14	M6	5 x 5
WV 01	14	35	135	70	22	M8	6 x 6
WV A1	14	45	165	90	32	M10	10 x 8
WV B1	18	60	210	110	42	M12	12 x 8
WV C1	18	85	275	135	55	M16	16 x 10
WV D1	23	100	340	150	65	M16	18 x 11
WV E1	29	120	435	230	75	M20	20 x 12
WV F1	40	150	550	270	90	M24	25 x 14

dimensions arbre d1 3/1							
Type	g	l1	m1	o	d1j6	r	clavette DIN 6885/1
WV 00	13	25	105	52	12	M5	4 x 4
WV 01	14	35	135	70	22	M8	6 x 6
WV A1	14	45	165	90	32	M10	10 x 8
WV B1	18	55	205	100	36	M10	10 x 8
WV C1	18	65	255	135	38	M10	10 x 8
WV D1	32	85	325	135	55	M16	16 x 10
WV E1	29	85	400	190	55	M16	16 x 10
WV F1	40	120	520	270	75	M20	20 x 12

dimensions arbre d1 3,5/1							
Type	g	l1	m1	o	d1j6	r	clavette DIN 6885/1
WV 00	13	25	105	52	12	M5	4 x 4
WV 01	14	30	130	70	16	M6	5 x 5
WV A1	14	32	152	80	20	M8	6 x 6
WV B1	23	45	200	80	26	M8	8 x 7
WV C1	18	45	235	105	32	M10	10 x 8
WV D1	28	70	310	110	42	M12	12 x 8
WV E1	29	75	390	190	50	M16	14 x 9
WV F1	40	95	495	200	60	M16	18 x 11

dimensions arbre d1 3,5/1							
Type	g	l1	m1	o	d1j6	r	clavette DIN 6885/1
WV 00	13	25	105	52	12	M5	4 x 4
WV 01	14	30	130	70	16	M6	5 x 5
WV A1	14	32	152	80	20	M8	6 x 6
WV B1	23	45	200	80	26	M8	8 x 7
WV C1	18	45	235	105	32	M10	10 x 8
WV D1	28	70	310	110	42	M12	12 x 8
WV E1	29	75	390	190	50	M16	14 x 9
WV F1	40	95	495	200	60	M16	18 x 11

dimensions arbre d1 5/1							
Type	g	l1	m1	o	d1j6	r	clavette DIN 6885/1
WV 00	13	20	100	47	9	M4	3 x 3
WV 01	14	22	122	55	12	M5	4 x 4
WV A1	14	30	150	65	16	M6	5 x 5
WV B1	24	40	195	70	22	M8	6 x 6
WV C1	18	45	235	95	26	M8	8 x 7
WV D1	23	58	298	105	32	M10	10 x 8
WV E1	29	70	385	190	42	M12	12 x 8
WV F1	40	85	485	200	55	M16	16 x 10

dimensions arbre d1 6/1							
Type	g	l1	m1	o	d1j6	r	clavette DIN 6885/1
WV 00							
WV 01	14	22	122	50	10	M4	3 x 3
WV A1	14	30	150	55	12	M5	4 x 4
WV B1	24	30	185	70	16	M6	5 x 5
WV C1	18	45	235	95	20	M8	6 x 6
WV D1	23	45	235	105	26	M8	8 x 7
WV E1	29	70	385	190	40	M12	12 x 8
WV F1	40	85	485	200	55	M16	16 x 10