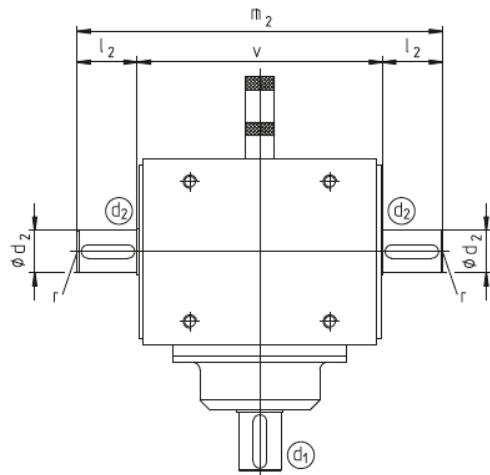
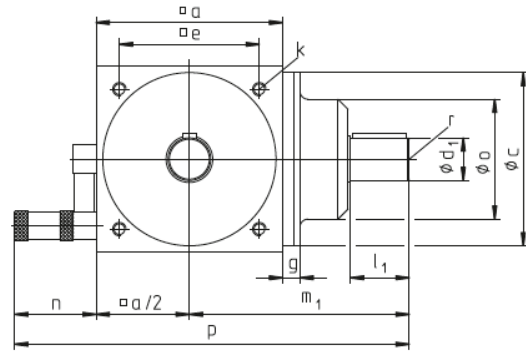
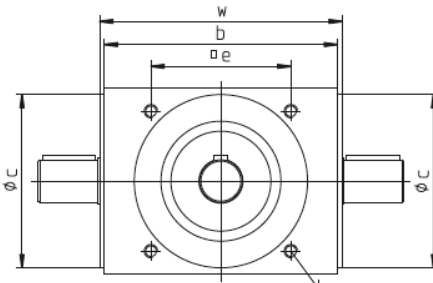
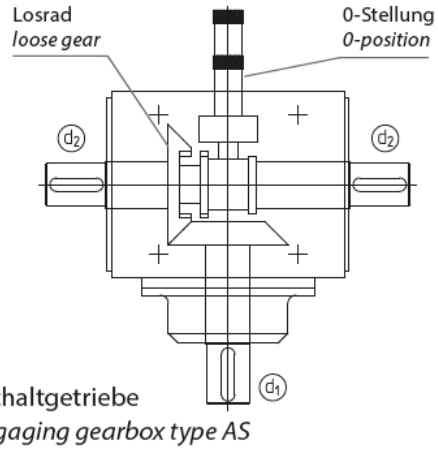
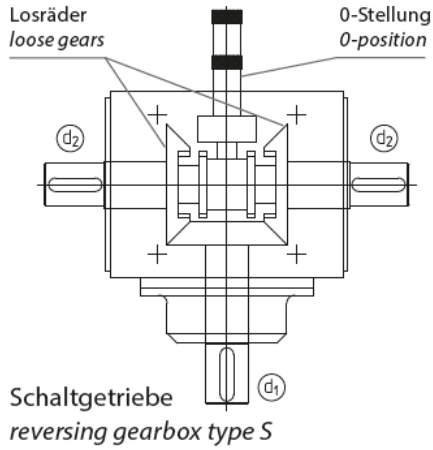
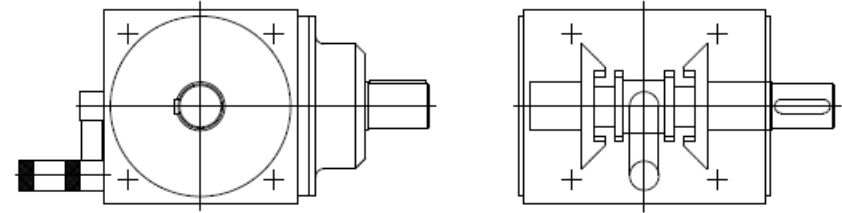


Renvoi d'angle débrayable et inverseur orthogonal AS et S

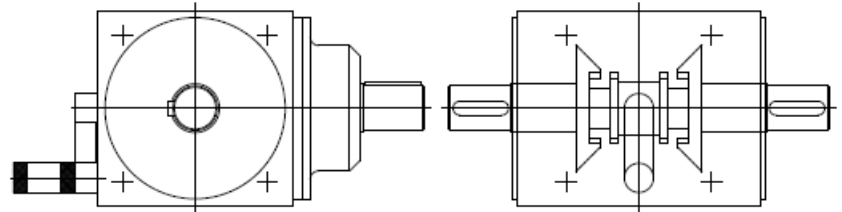




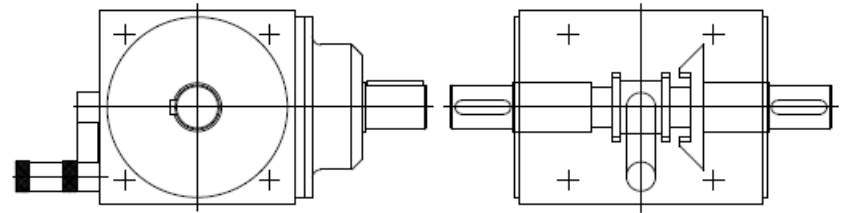
Position standard du levier
Version S disposition I



Position standard du levier
Version S disposition III



Position standard du levier
Version AS disposition III



dimensions communes											dimensions arbre d2		
Type	a	b	cj7	e	k	Prof = 1,5 x k	l2	m2	v	w	d2j6	r	clavette DIN 6885/1
S/AS 01	110	145	102	82		M8	35	222	152	150	22	M8	6 x 6
S/ASA1	140	175	130	105		M10	45	274	184	182	32	M10	10 x 8
S/AS B1	170	215	160	130		M12	60	344	224	222	42	M12	12 x 8
S/AS C1	210	260	195	160		M16	85	440	270	268	55	M16	16 x 10
S/AS D1	260	330	245	200		M16	100	540	340	338	65	M16	18 x 11
S/AS E1	330	430	310	260		M20	120	680	440	438	75	M20	20 x 12
S/AS F1	400	530	380	320		M24	150	840	540	538	90	M24	25 x 14

dimensions arbre d1 1/1 1,25/1 1,5/1 1,75/1 2/1									
Type	g	l1	m1	n	o	p	d1j6	r	clavette DIN 6885/1
S/AS 01	14	35	135	65	70	255	22	M8	6 x 6
S/ASA1	14	45	165	65	90	300	32	M10	10 x 8
S/AS B1	18	60	210	80	110	375	42	M12	12 x 8
S/AS C1	18	85	275	80	135	460	55	M16	16 x 10
S/AS D1	23	100	340	80	150	550	65	M16	18 x 11
S/AS E1	29	120	435	80	230	680	75	M20	20 x 12
S/AS F1	40	150	550	80	270	830	90	M24	25 x 14

dimensions arbre d1 3/1									
Type	g	l1	m1	n	o	p	d1j6	r	clavette DIN 6885/1
S/AS 01	14	35	135	65	70	255	22	M8	6 x 6
S/ASA1	14	45	165	65	90	300	32	M10	10 x 8
S/AS B1	18	55	205	80	100	370	36	M10	10 x 8
S/AS C1	18	65	255	80	135	440	38	M10	10 x 8
S/AS D1	32	85	325	80	135	535	55	M16	16 x 10
S/AS E1	29	85	400	80	190	645	55	M16	16 x 10
S/AS F1	40	120	520	80	270	800	75	M20	20 x 12