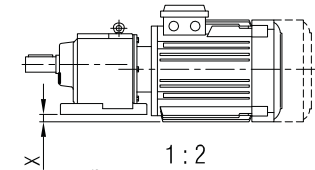
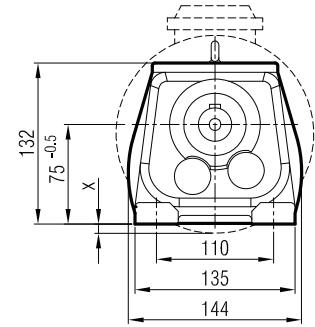
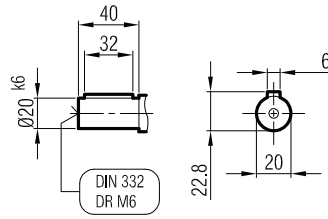
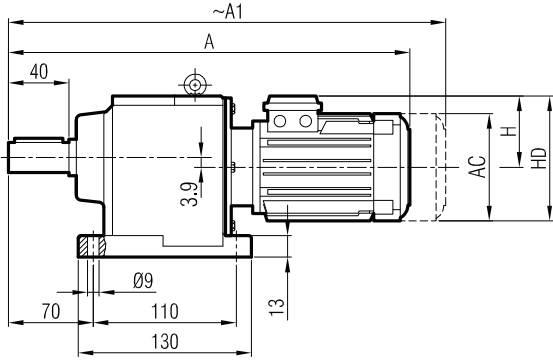


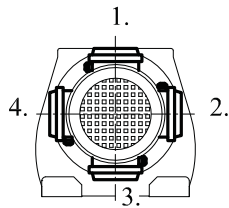


İRAM 42
İRAM 43



1 : 2
(Ölçek / Scale / échelle)

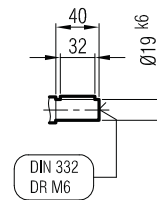
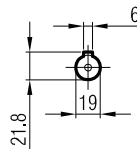
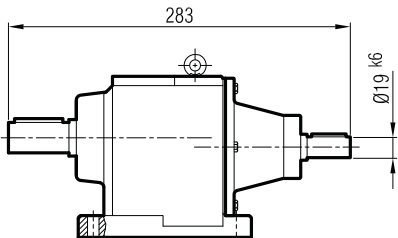
Klemens Pozisyonları
Terminal Box Positions
Klemmenkasten Positionen



	63	71	80	90 S	90 L		
A	352	385	415	445	470		
A ₁	408	436	484	511	536		
H	97	111	118	126	126		
HD	160	182	198	216	216		
AC	121	138	156	176	176		
x	-	-	7	17	17		

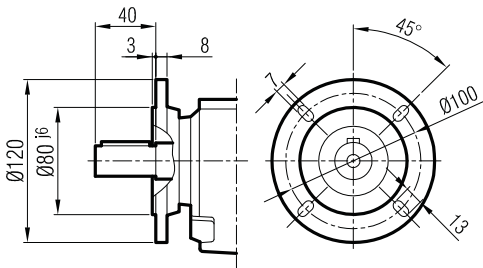
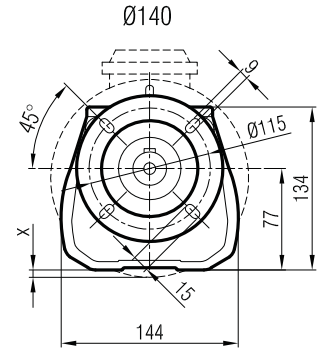
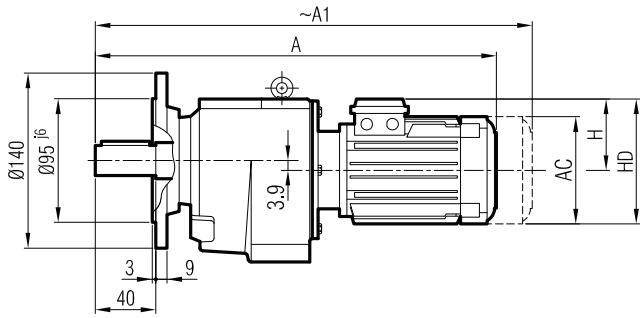
"A₁" Ölçüsü Frenli Motorlar içindir.
Dimension "A₁" is for motors with brake
Le dimensions "A₁" correspond aux moteurs équipés de freins.

İRA 42
İRA 43

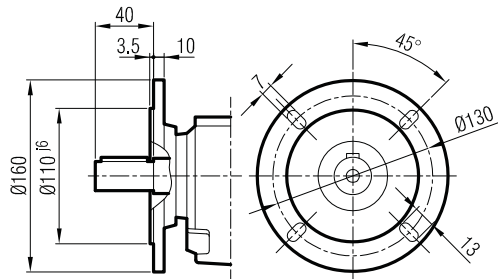




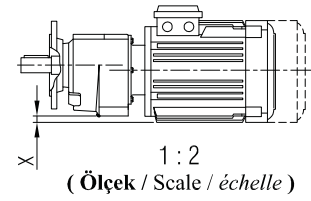
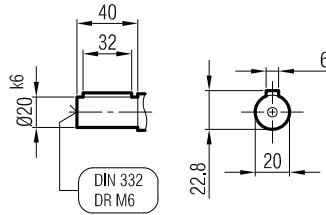
İRFM 42
İRFM 43



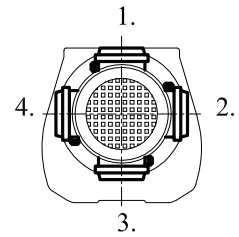
Ø120
(Opsiyonel / Optional / Optional)



Ø160
(Opsiyonel / Optional / Optional)



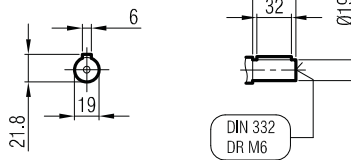
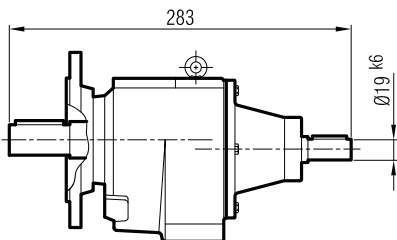
Klemens Pozisyonları
Terminal Box Positions
Klemmenkasten Positionen



	63	71	80	90 S	90 L		
A	352	385	415	445	470		
A1	408	436	484	511	536		
H	97	111	118	126	126		
HD	160	182	198	216	216		
AC	121	138	156	176	176		
x	-	-	7	17	17		

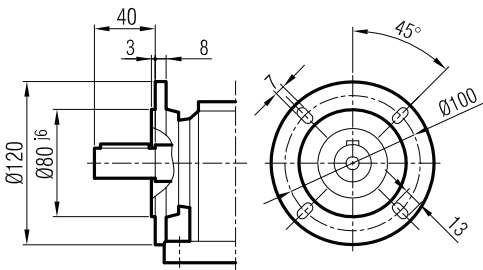
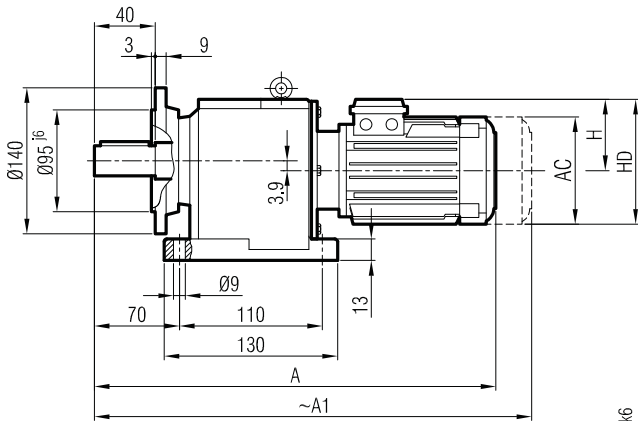
"A1" Ölçüsü Frenli Motorlar içindir.
Dimension "A1" is for motors with brake
Le dimensions "A1" correspond aux moteurs équipés de freins.

İRF 42
İRF 43

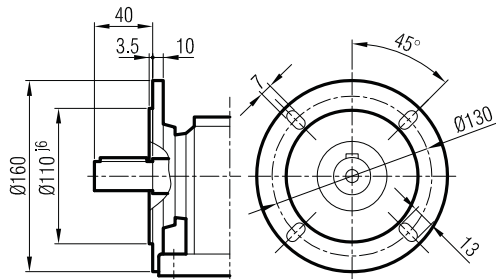




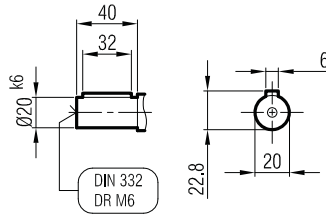
İRAFM 42
İRAFM 43



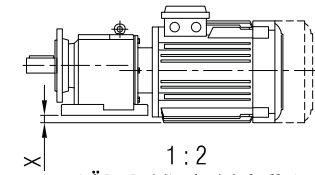
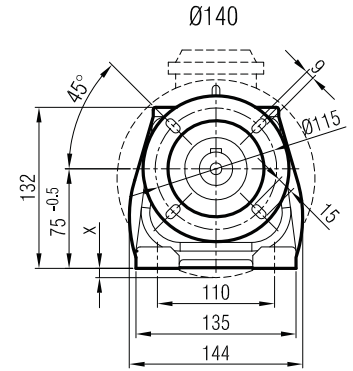
Ø120
(Opsiyonel / Optional / Optional)



Ø160
(Opsiyonel / Optional / Optional)

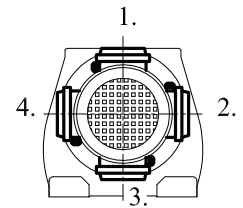


DIN 332
DR M6



1 : 2
(Ölçek / Scale / échelle)

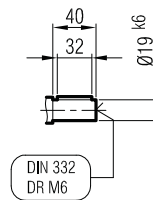
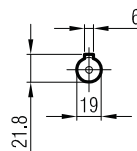
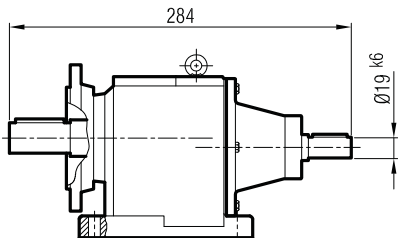
Klemens Pozisyonları
Terminal Box Positions
Klemmenkasten Positionen



	63	71	80	90 S	90 L	
A	352	385	415	445	470	
A ₁	408	436	484	511	536	
H	97	111	118	126	126	
HD	160	182	198	216	216	
AC	121	138	156	176	176	
x	-	-	7	17	17	

"A₁" Ölçüsü Frenli Motorlar içindir.
Dimension "A₁" is for motors with brake
Le dimensions "A₁" correspond aux moteurs
équipés de freins.

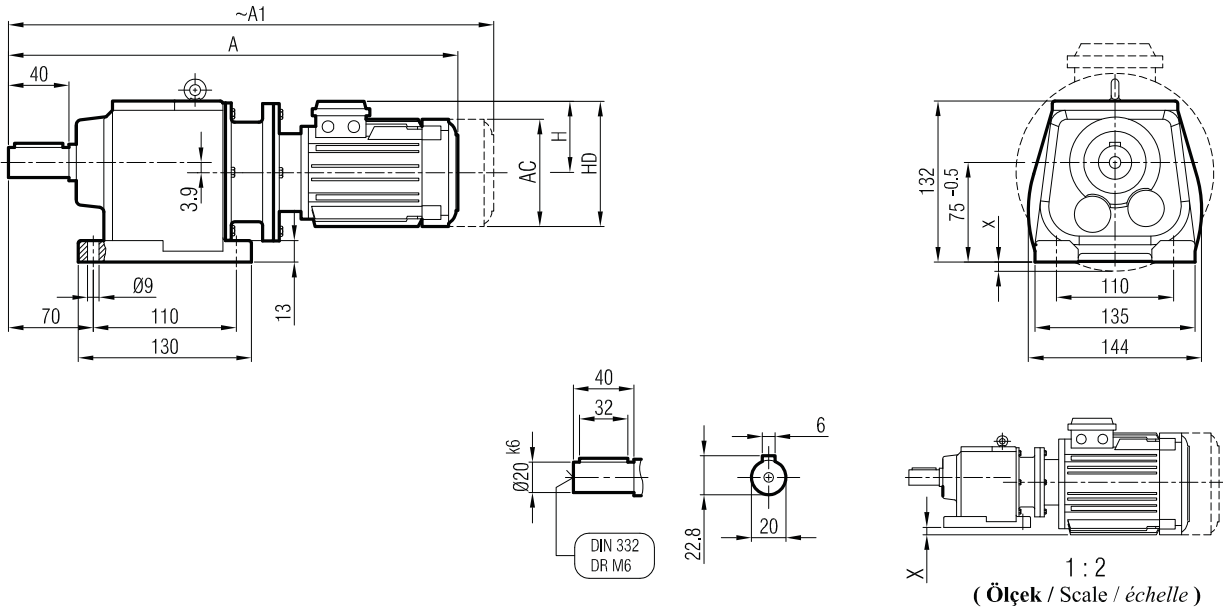
İRAF 42
İRAF 43



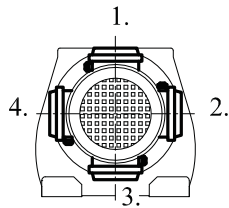
DIN 332
DR M6



İRAPM 42
İRAPM 43



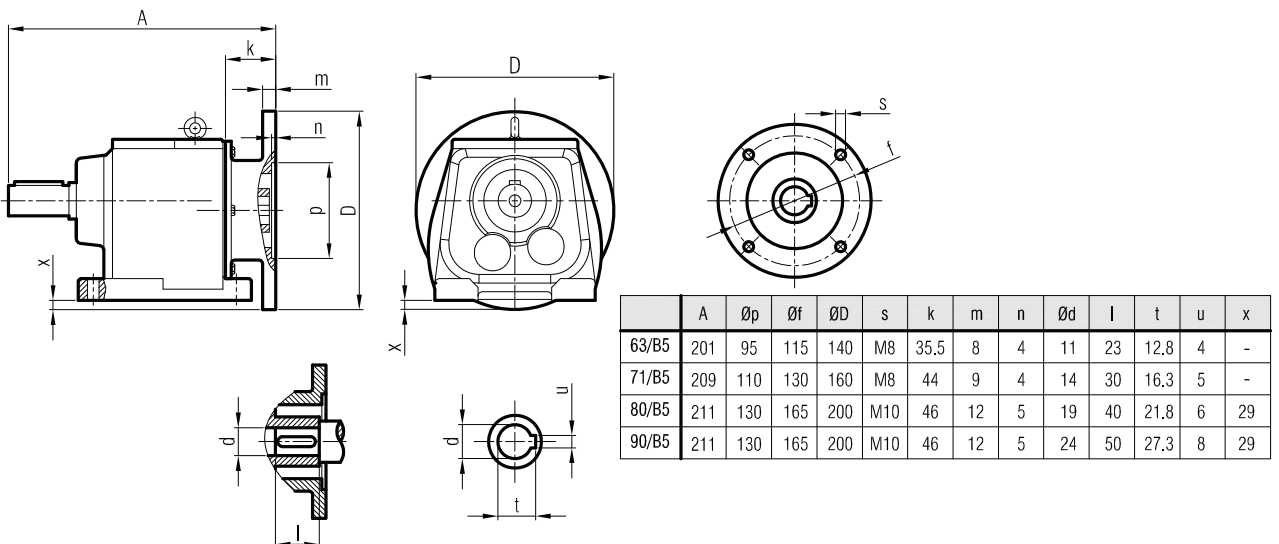
Klemens Pozisyonları
Terminal Box Positions
Klemmenkasten Positionen



	63/B5	71/B5	80/B5	90 S/B5	90 L/B5
A	397	432	455	470	495
A ₁	453	483	524	536	561
H	97	111	118	126	126
HD	160	182	198	216	216
AC	121	138	156	176	176
x	-	-	7	17	17

"A₁" Ölçüsü Frenli Motorlar içindir.
Dimension "A₁" is for motors with brake
Le dimensions "A₁" correspondent aux moteurs équipés de freins.

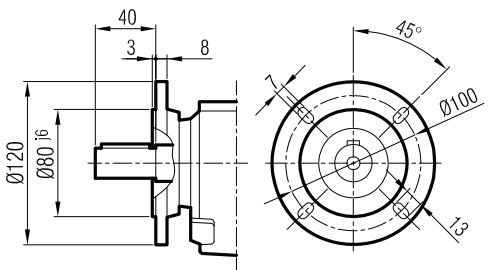
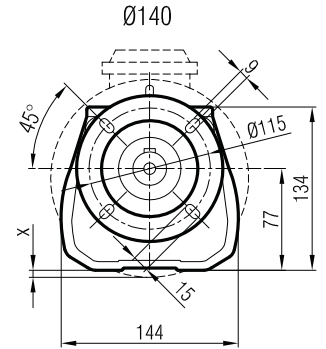
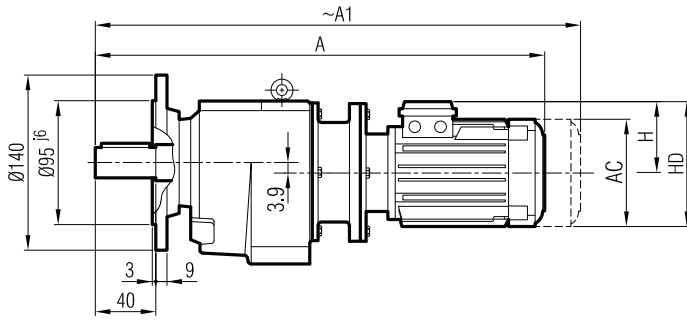
İRAP 42
İRAP 43



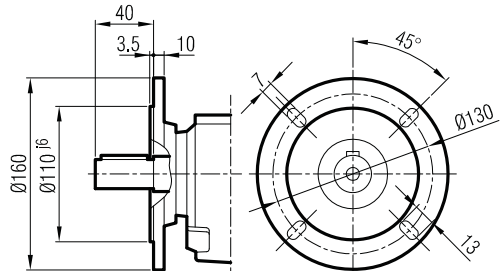
	A	Øp	Øf	ØD	s	k	m	n	Ød	l	t	u	x
63/B5	201	95	115	140	M8	35,5	8	4	11	23	12,8	4	-
71/B5	209	110	130	160	M8	44	9	4	14	30	16,3	5	-
80/B5	211	130	165	200	M10	46	12	5	19	40	21,8	6	29
90/B5	211	130	165	200	M10	46	12	5	24	50	27,3	8	29



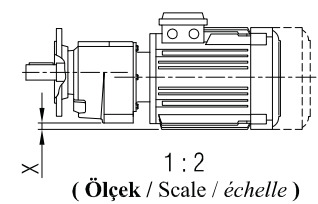
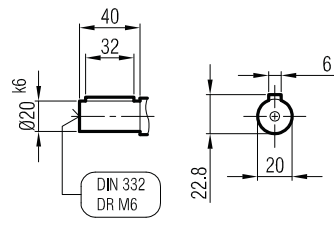
İRFPM 42
İRFPM 43



Ø120
(Opsiyonel / Optional / Optional)

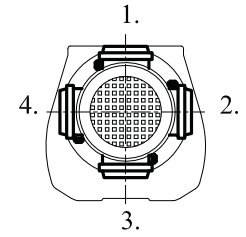


Ø160
(Opsiyonel / Optional / Optional)



1 : 2
(Ölçek / Scale / échelle)

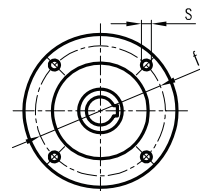
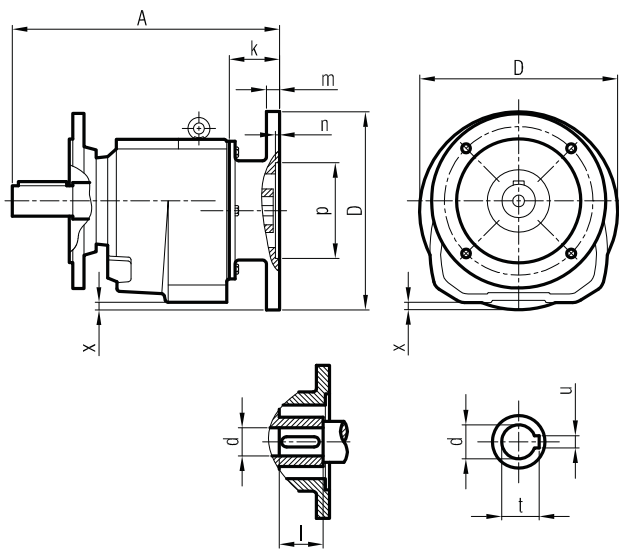
Klemens Pozisyonları
Terminal Box Positions
Klemmenkasten Positionen



	63/B5	71/B5	80/B5	90 S/B5	90 L/B5
A	397	432	455	470	495
A ₁	453	483	524	536	561
H	97	111	118	126	126
HD	160	182	198	216	216
AC	121	138	156	176	176
x	-	-	7	17	17

"A₁" Ölçüsü Frenli Motorlar içindir.
Dimension "A₁" is for motors with brake
Le dimensions "A₁" correspond aux moteurs équipés de freins.

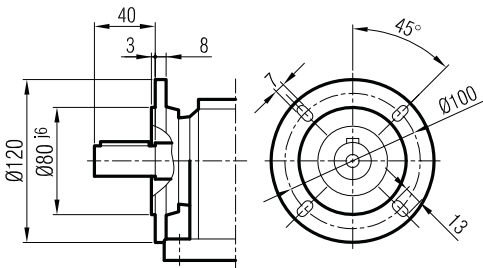
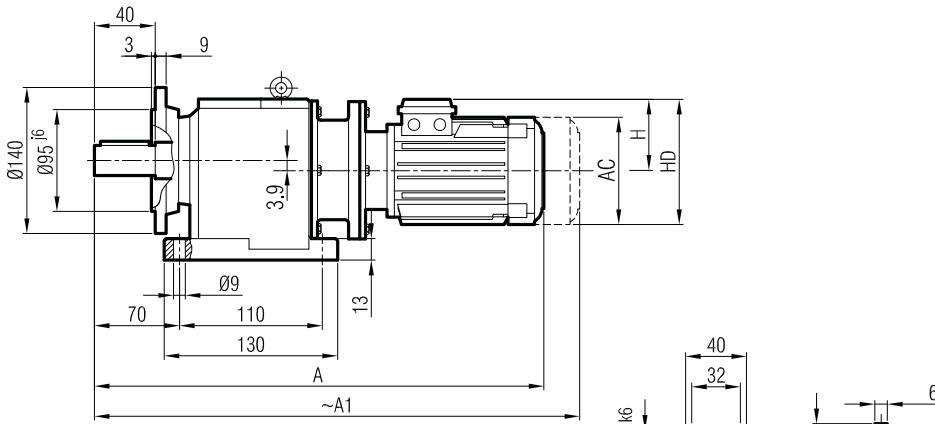
İRFP 42
İRFP 43



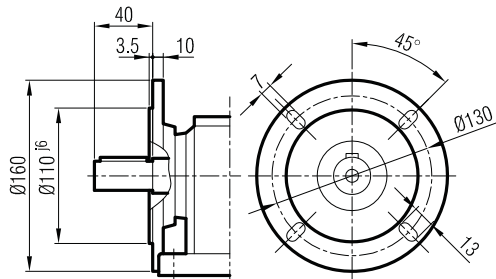
	A	Øp	Øf	ØD	s	k	m	n	Ød	l	t	u	x
63/B5	201	95	115	140	M8	35.5	8	4	11	23	12.8	4	-
71/B5	209	110	130	160	M8	44	9	4	14	30	16.3	5	-
80/B5	211	130	165	200	M10	46	12	5	19	40	21.8	6	29
90/B5	211	130	165	200	M10	46	12	5	24	50	27.3	8	29



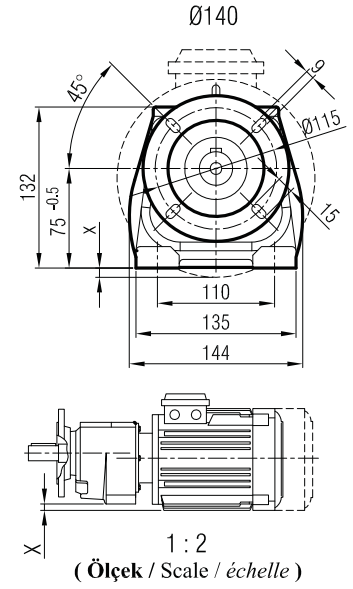
İRAFPM 42
İRAFPM 43



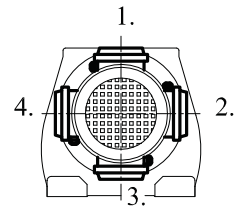
Ø120
(Opsiyonel / Optional / Optional)



Ø160
(Opsiyonel / Optional / Optional)



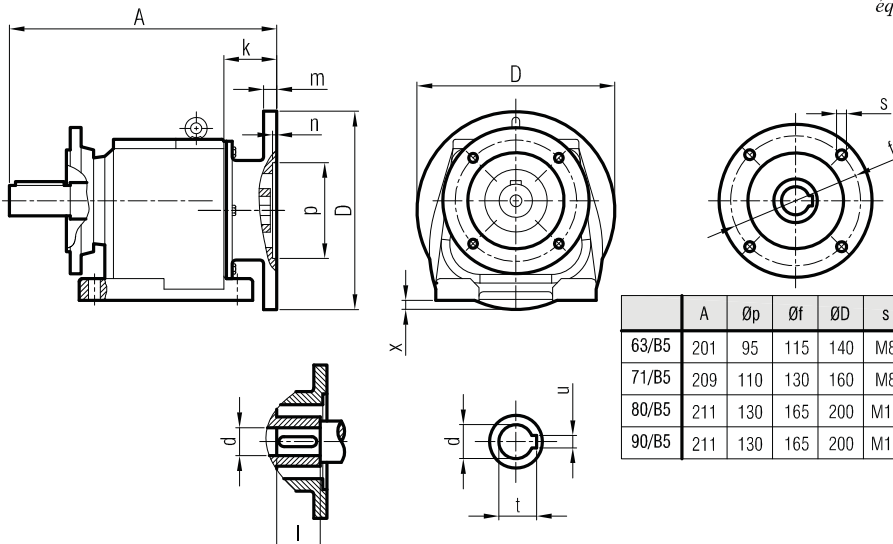
Klemens Pozisyonları
Terminal Box Positions
Klemmenkasten Positionen



	63/B5	71/B5	80/B5	90 S/B5	90 L/B5
A	397	432	455	470	495
A ₁	453	483	524	536	561
H	97	111	118	126	126
HD	160	182	198	216	216
AC	121	138	156	176	176
x	-	-	7	17	17

"A₁" Ölçüsü Frenli Motorlar içindir.
Dimension "A₁" is for motors with brake
Le dimensions "A₁" correspondent aux moteurs équipés de freins.

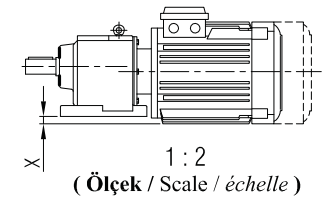
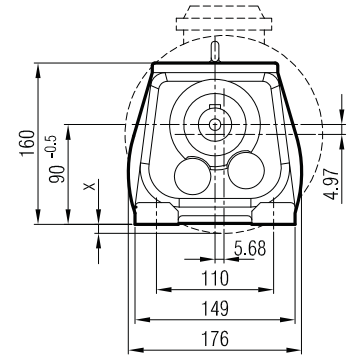
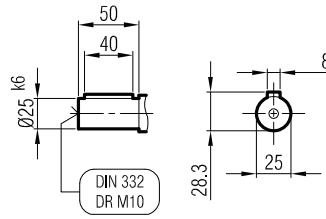
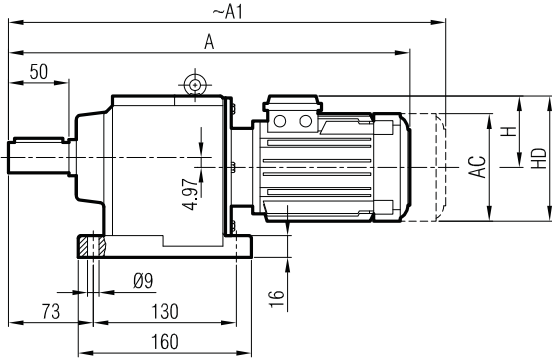
İRAFP 42
İRAFP 43



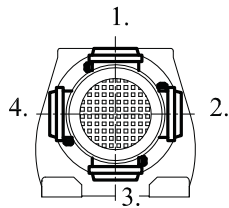
	A	Øp	Øf	ØD	s	k	m	n	Ød	l	t	u	x
63/B5	201	95	115	140	M8	35.5	8	4	11	23	12.8	4	-
71/B5	209	110	130	160	M8	44	9	4	14	30	16.3	5	-
80/B5	211	130	165	200	M10	46	12	5	19	40	21.8	6	29
90/B5	211	130	165	200	M10	46	12	5	24	50	27.3	8	29



İRAM 52
İRAM 53



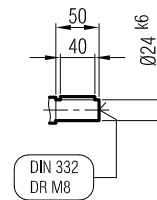
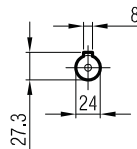
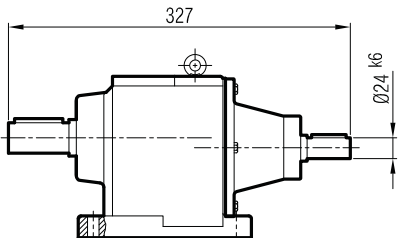
Klemens Pozisyonları
Terminal Box Positions
Klemmenkasten Positionen



	71	80	90 S	90 L	100		
A	416	443	472	497	537		
A ₁	467	512	538	563	615		
H	111	118	126	126	134		
HD	182	198	216	216	234		
AC	138	156	176	176	194		
x	-	-	3	3	12		

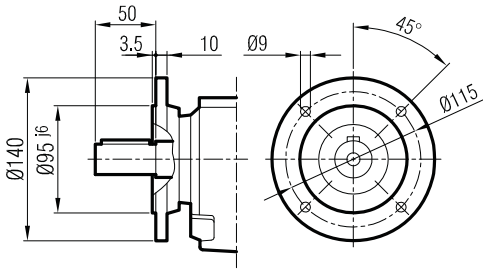
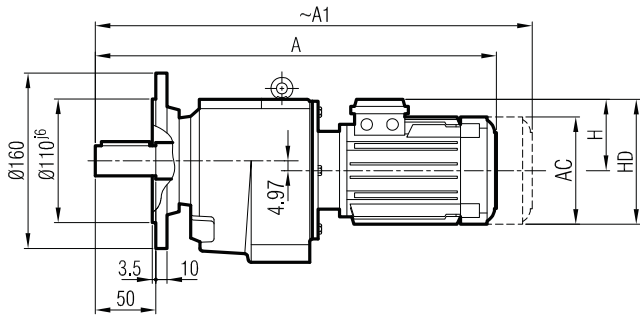
"A₁" Ölçüsü Frenli Motorlar içindir.
Dimension "A₁" is for motors with brake
Le dimensions "A₁" correspond aux moteurs équipés de freins.

İRA 52
İRA 53

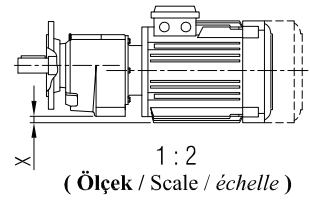
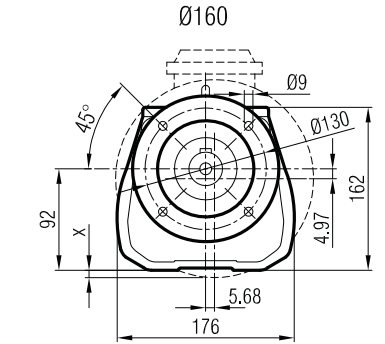
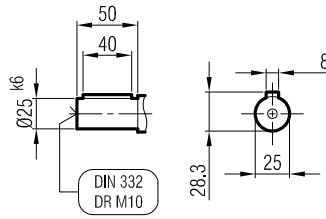




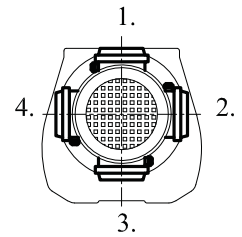
İRFM 52
İRFM 53



Ø140
(Opsiyonel / Optional / Optional)



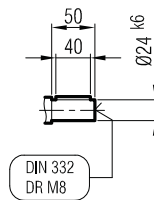
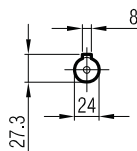
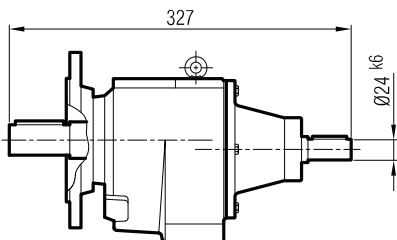
Klemens Pozisyonları
Terminal Box Positions
Klemmenkasten Positionen



	71	80	90 S	90 L	100		
A	416	443	472	497	537		
A1	467	512	538	563	615		
H	111	118	126	126	134		
HD	182	198	216	216	234		
AC	138	156	176	176	194		
x	-	-	3	3	12		

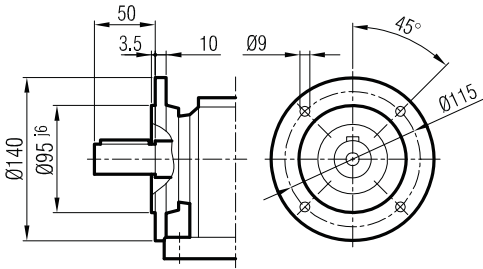
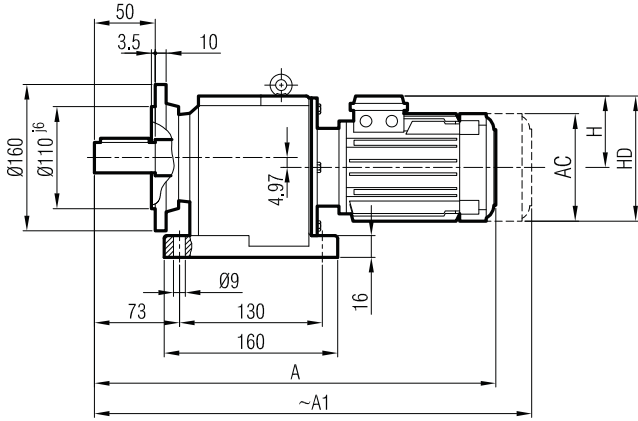
"A1" Ölçüsü Frenli Motorlar içindir.
Dimension "A1" is for motors with brake
Le dimensions "A1" correspond aux moteurs équipés de freins.

İRF 52
İRF 53

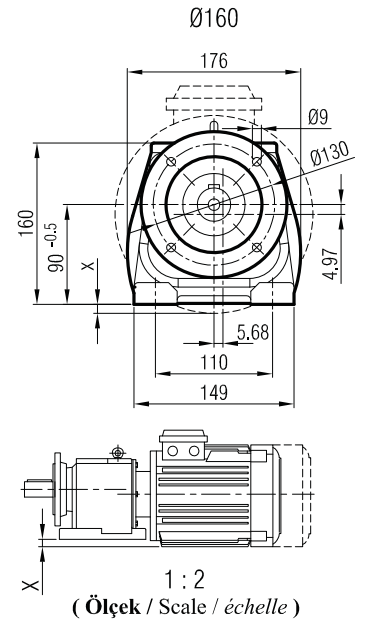
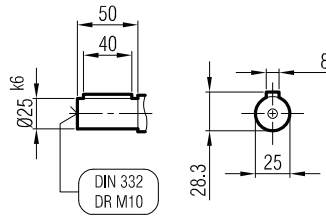




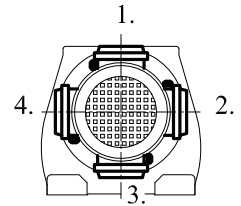
İRAFM 52
İRAFM 53



Ø140
(Opsiyonel / Optional / Optional)

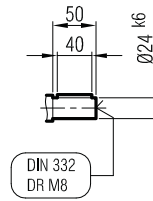
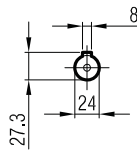
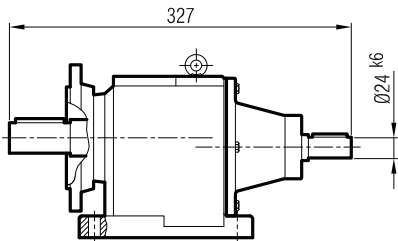


Klemens Pozisyonları
Terminal Box Positions
Klemmenkasten Positionen



	71	80	90 S	90 L	100		
A	416	443	472	497	537		
A ₁	467	512	538	563	615		
H	111	118	126	126	134		
HD	182	198	216	216	234		
AC	138	156	176	176	194		
x	-	-	3	3	12		

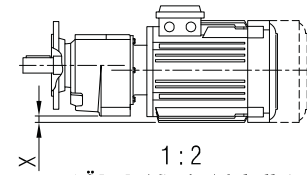
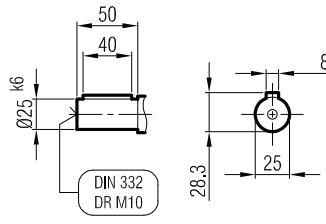
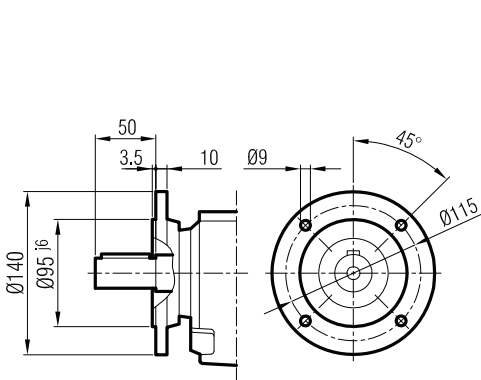
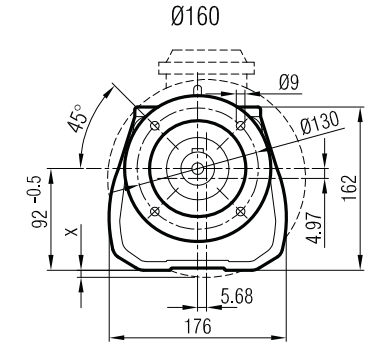
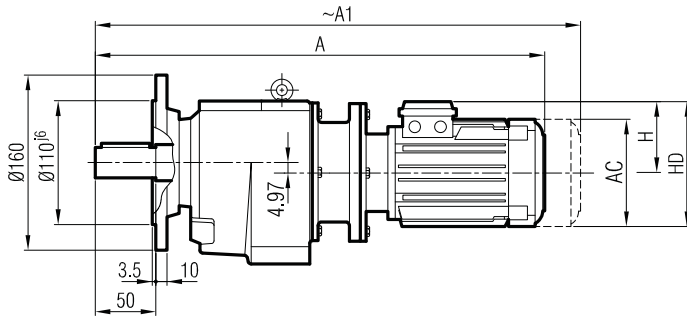
İRAF 52
İRAF 53



"A₁" Ölçüsü Frenli Motorlar içindir.
Dimension "A₁" is for motors with brake
Le dimensions "A₁" correspond aux moteurs équipés de freins.

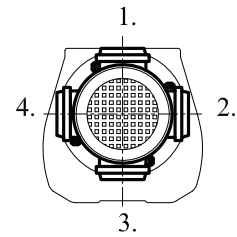


İRFPM 52
İRFPM 53



1 : 2
(Ölçek / Scale / échelle)

Klemens Pozisyonları
Terminal Box Positions
Klemmenkasten Positionen

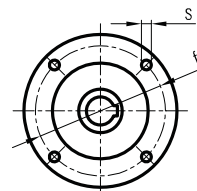
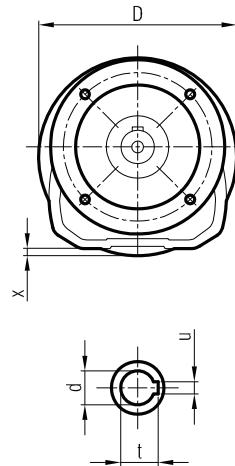
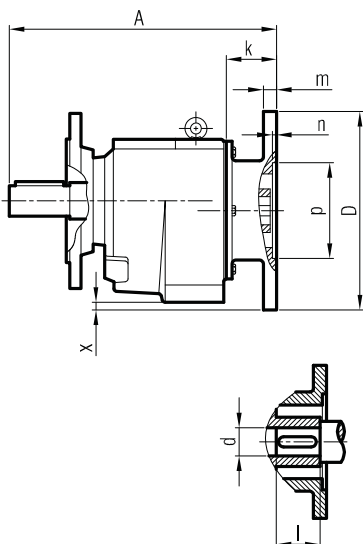


Ø140
(Opsiyonel / Optional / Optional)

	63/B5	71/B5	80/B5	90 S/B5	90 L/B5	100/B5
A	430	465	488	503	528	574
A ₁	486	516	557	569	594	652
H	97	111	118	126	126	134
HD	160	182	198	216	216	234
AC	121	138	156	176	176	194
x	-	-	-	3	3	12

"A₁" Ölçüsü Frenli Motorlar içindir.
Dimension "A₁" is for motors with brake
Le dimensions "A₁" correspond aux moteurs équipés de freins.

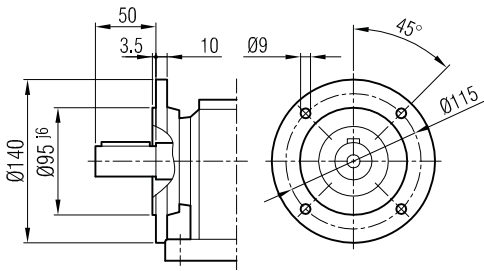
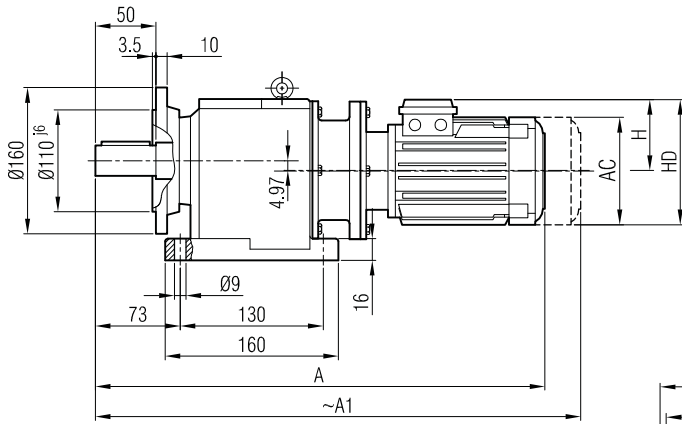
İRFP 52
İRFP 53



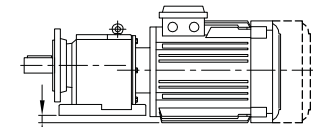
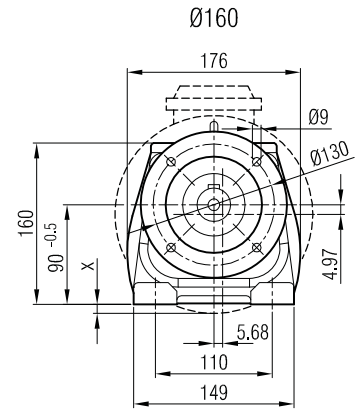
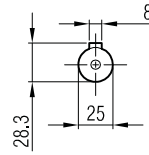
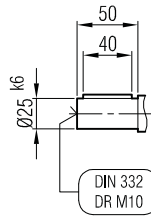
	A	Øp	Øf	ØD	s	k	m	n	Ød	l	t	u	x
63/B5	234	95	115	140	M8	35.5	8	4	11	23	12.8	4	-
71/B5	242	110	130	160	M8	44	9	4	14	30	16.3	5	-
80/B5	244	130	165	200	M10	46	12	5	19	40	21.8	6	15
90/B5	244	130	165	200	M10	46	12	5	24	50	27.3	8	15
100/B5	258	180	215	250	M12	60	14	5	28	60	31.3	8	40



İRAFPM 52
İRAFPM 53

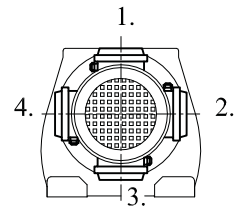


Ø140
(Opsiyonel / Optional / Optional)



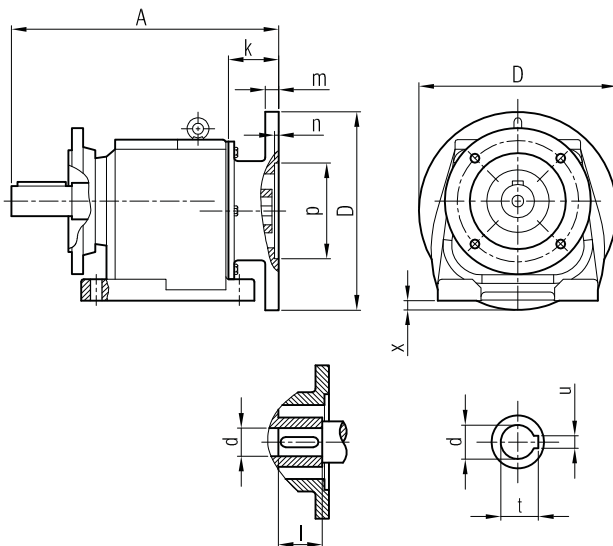
1 : 2
(Ölçek / Scale / échelle)

Klemens Pozisyonları
Terminal Box Positions
Klemmenkasten Positionen



	63/B5	71/B5	80/B5	90 S/B5	90 L/B5	100/B5
A	430	465	488	503	528	574
A ₁	486	516	557	569	594	652
H	97	111	118	126	126	134
HD	160	182	198	216	216	234
AC	121	138	156	176	176	194
x	-	-	-	3	3	12

İRAFP 52
İRAFP 53

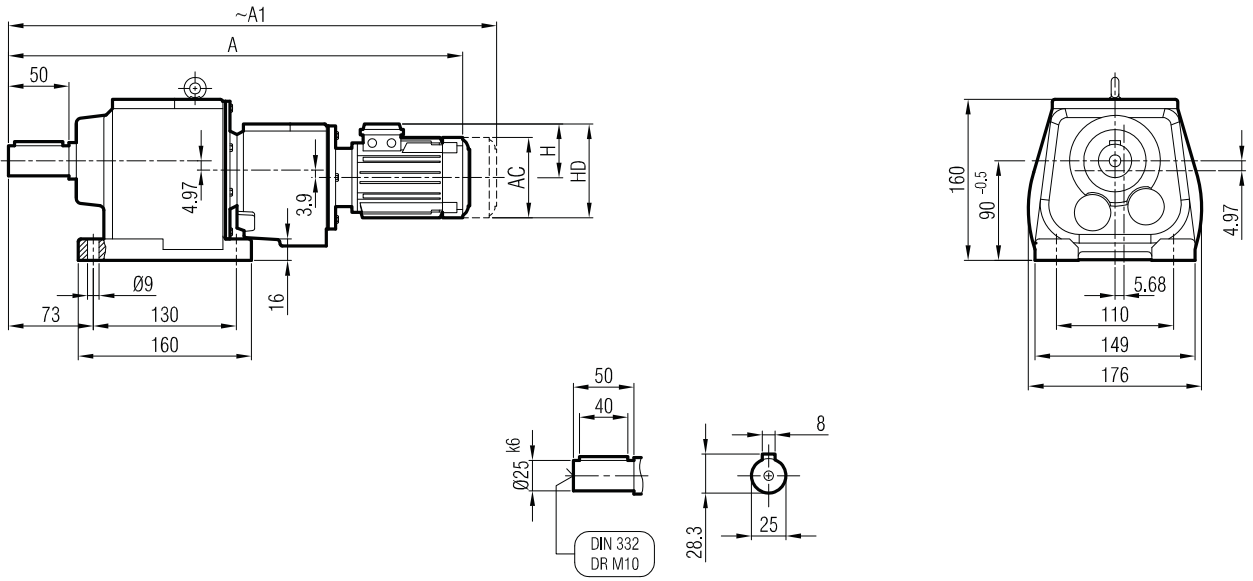


	A	Øp	Øf	ØD	s	k	m	n	Ød	l	t	u	x
63/B5	234	95	115	140	M8	35.5	8	4	11	23	12.8	4	-
71/B5	242	110	130	160	M8	44	9	4	14	30	16.3	5	-
80/B5	244	130	165	200	M10	46	12	5	19	40	21.8	6	15
90/B5	244	130	165	200	M10	46	12	5	24	50	27.3	8	15
100/B5	258	180	215	250	M12	60	14	5	28	60	31.3	8	40

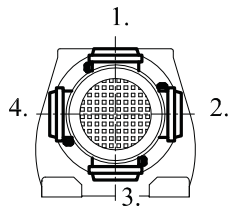
"A₁" Ölçüsü Frenli Motorlar içindir.
Dimension "A₁" is for motors with brake
Le dimensions "A₁" correspond aux moteurs
équipés de freins.



İRAM 53 İR 42



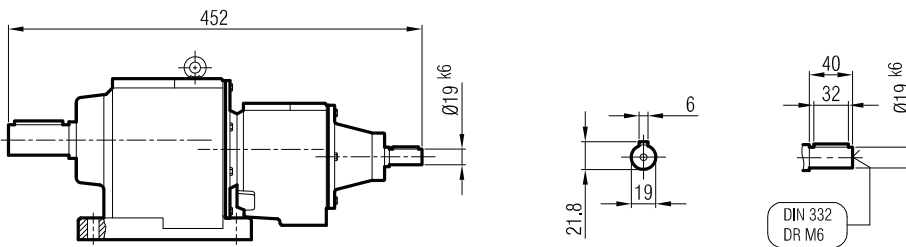
Klemens Pozisyonları
Terminal Box Positions
Klemmenkasten Positionen



	63	71				
A	510	543				
A ₁	566	594				
H	97	111				
HD	160	182				
AC	121	138				

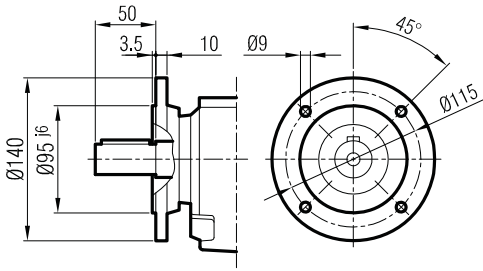
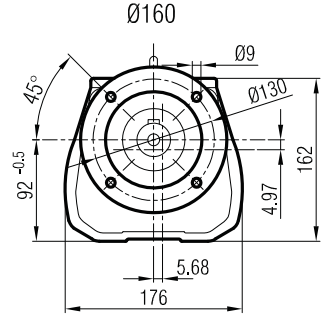
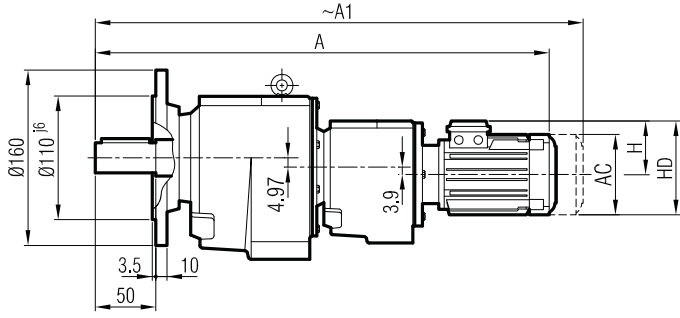
"A₁" Ölçüsü Frenli Motorlar içindir.
Dimension "A₁" is for motors with brake
Le dimensions "A₁" correspond aux moteurs équipés de freins.

İRA 52 İR 42 / İRA 52 İR 43
İRA 53 İR 42 / İRA 53 İR 43

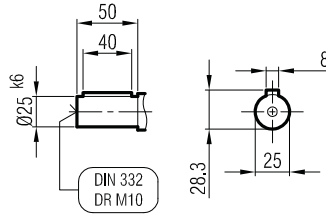




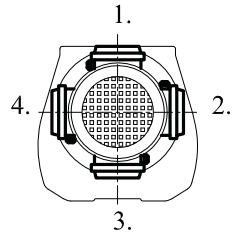
İRFM 53 İR 42



Ø140
(Opsiyonel / Optional / Optional)

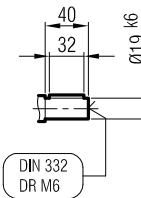
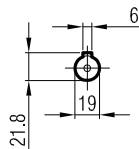
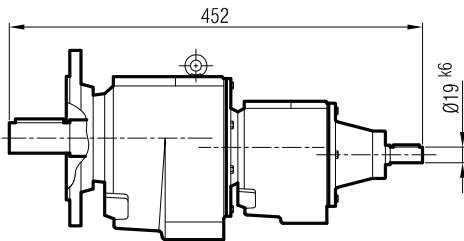


Klemens Pozisyonları
Terminal Box Positions
Klemmenkasten Positionen



	63	71				
A	510	543				
A1	566	594				
H	97	111				
HD	160	182				
AC	121	138				

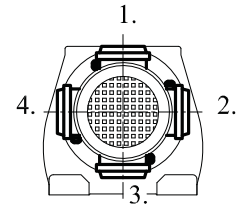
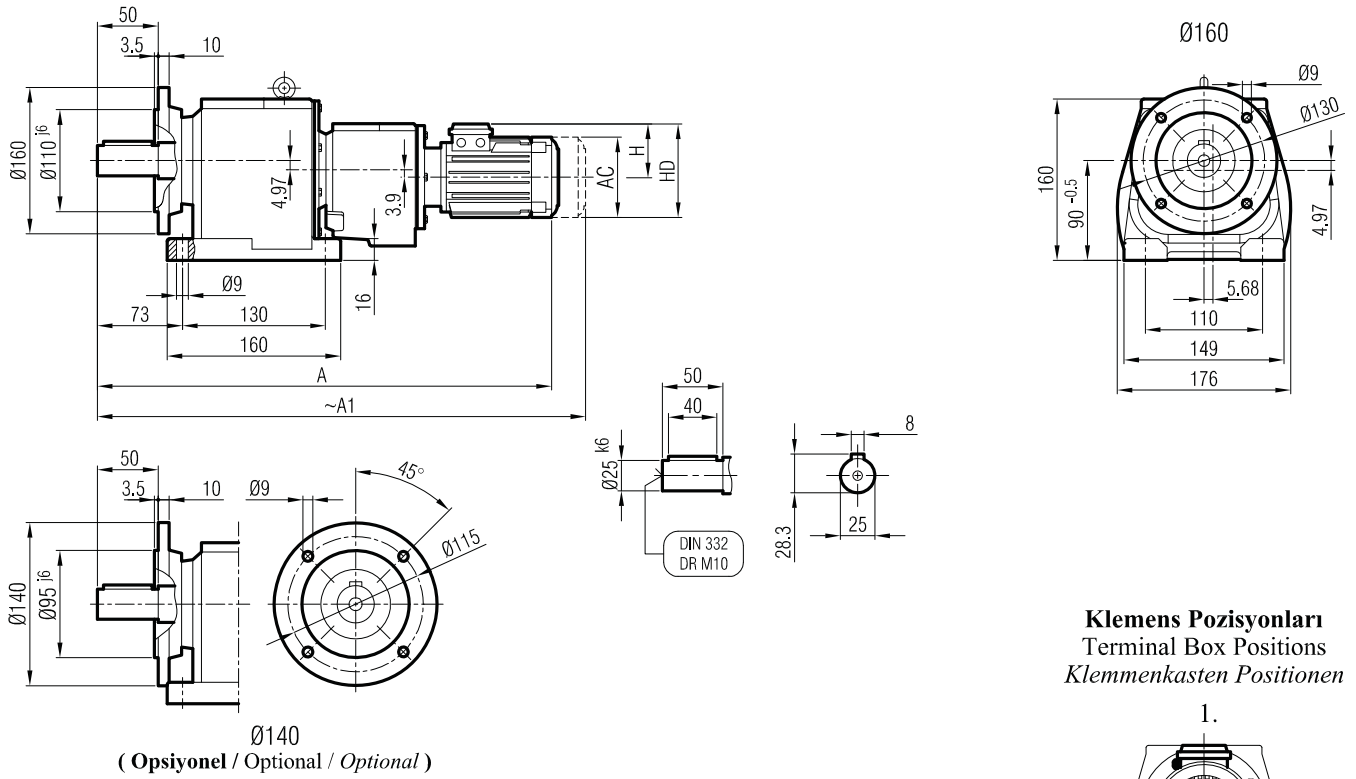
İRF 52 İR 42 / İRF 52 İR 43
İRF 53 İR 42 / İRF 53 İR 43



"A1" Ölçüsü Frenli Motorlar içindir.
Dimension "A1" is for motors with brake
Le dimensions "A1" correspondent aux moteurs équipés de freins.



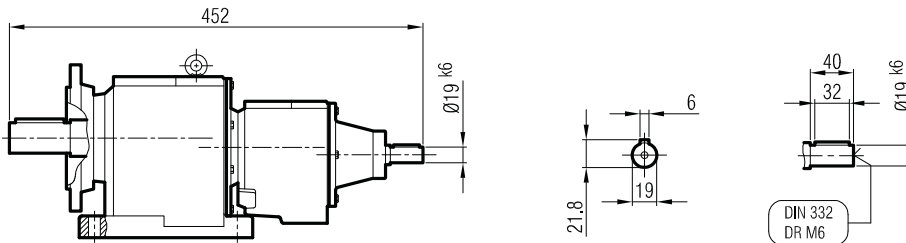
İRAFM 53 İR 42



	63	71			
A	510	543			
A ₁	566	594			
H	97	111			
HD	160	182			
AC	121	138			

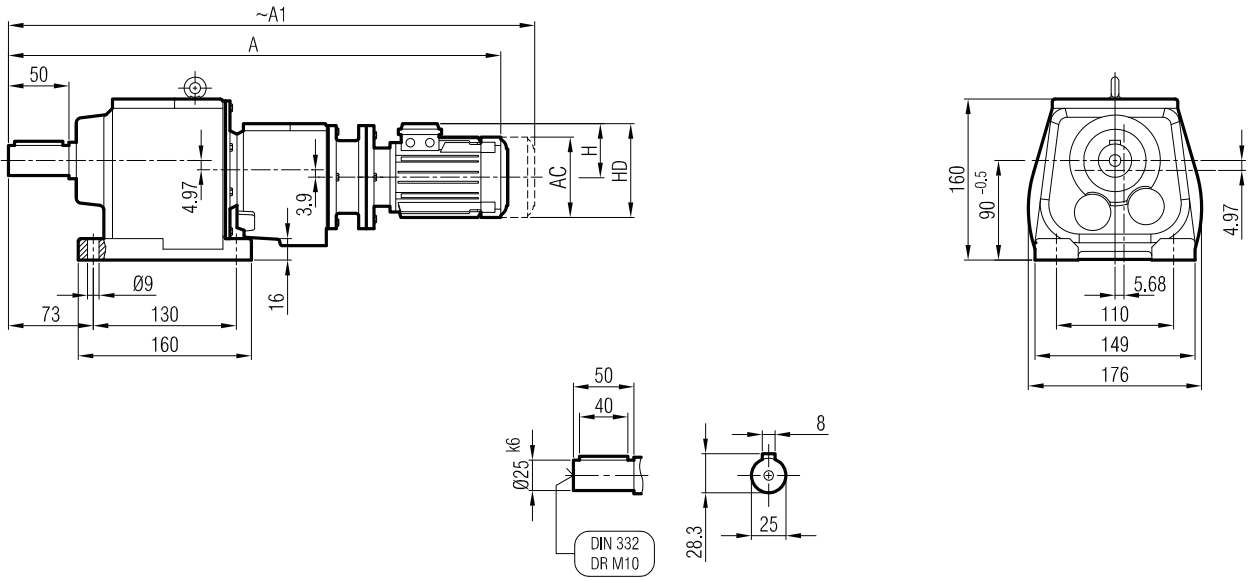
"A₁" Ölçüsü Frenli Motorlar içindir.
Dimension "A₁" is for motors with brake
Le dimensions "A₁" correspond aux moteurs
équipés de freins.

İRAF 52 İR 42 / İRAF 52 İR 43
İRAF 53 İR 42 / İRAF 53 İR 43

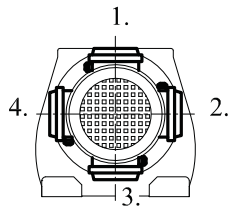




İRAPM 53 İR 42



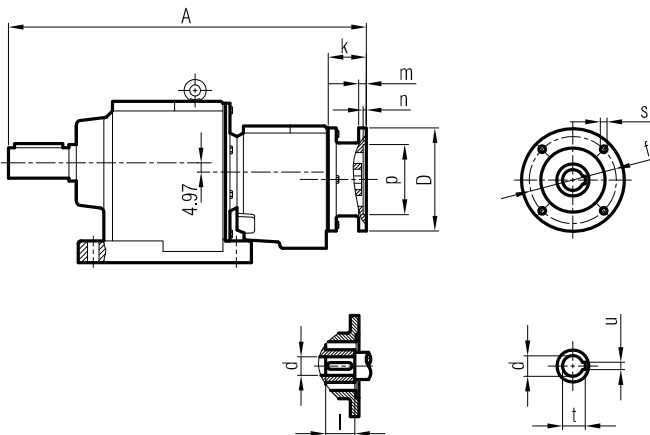
Klemens Pozisyonları
Terminal Box Positions
Klemmenkasten Positionen



	63/B5	71/B5			
A	555	590			
A ₁	611	641			
H	97	111			
HD	160	182			
AC	121	138			

"A₁" Ölçüsü Frenli Motorlar içindir.
Dimension "A₁" is for motors with brake
Le dimensions "A₁" correspond aux moteurs équipés de freins.

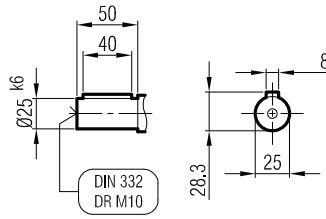
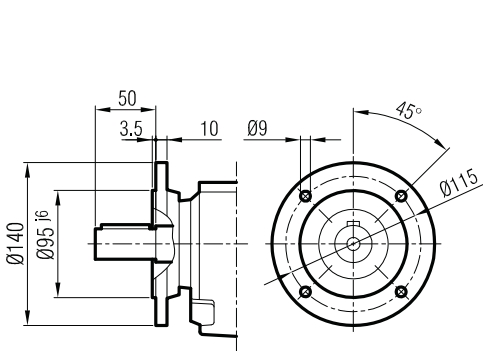
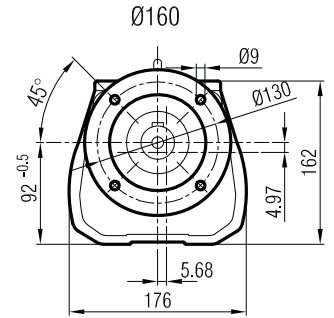
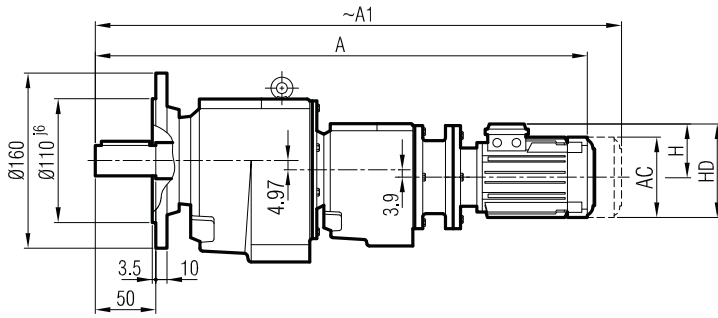
İRAP 52 İR 42 / İRAP 52 İR 43
İRAP 53 İR 42 / İRAP 53 İR 43



	A	Øp	Øf	ØD	s	k	m	n	Ød	l	t	u
63/B5	359	95	115	140	M8	35.5	8	4	11	23	12.8	4
71/B5	367	110	130	160	M8	44	9	4	14	30	16.3	5

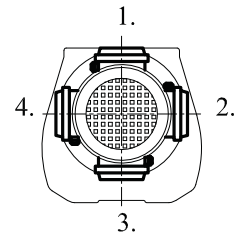


İRFPM 53 İR 42



Ø140
(Opsiyonel / Optional / Optional)

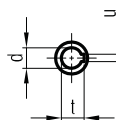
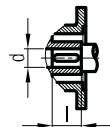
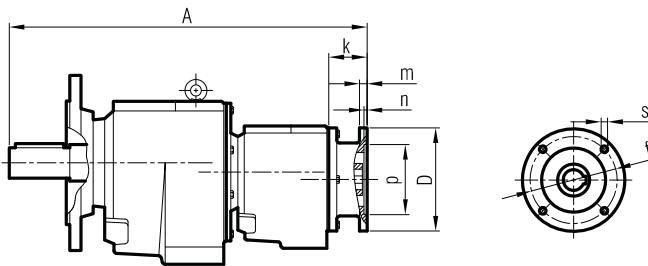
Klemens Pozisyonları
Terminal Box Positions
Klemmenkasten Positionen



	63/B5	71/B5			
A	555	590			
A ₁	611	641			
H	97	111			
HD	160	182			
AC	121	138			

"A₁" Ölçüsü Frenli Motorlar içindir.
Dimension "A₁" is for motors with brake
Le dimensions "A₁" correspond aux moteurs
équipés de freins.

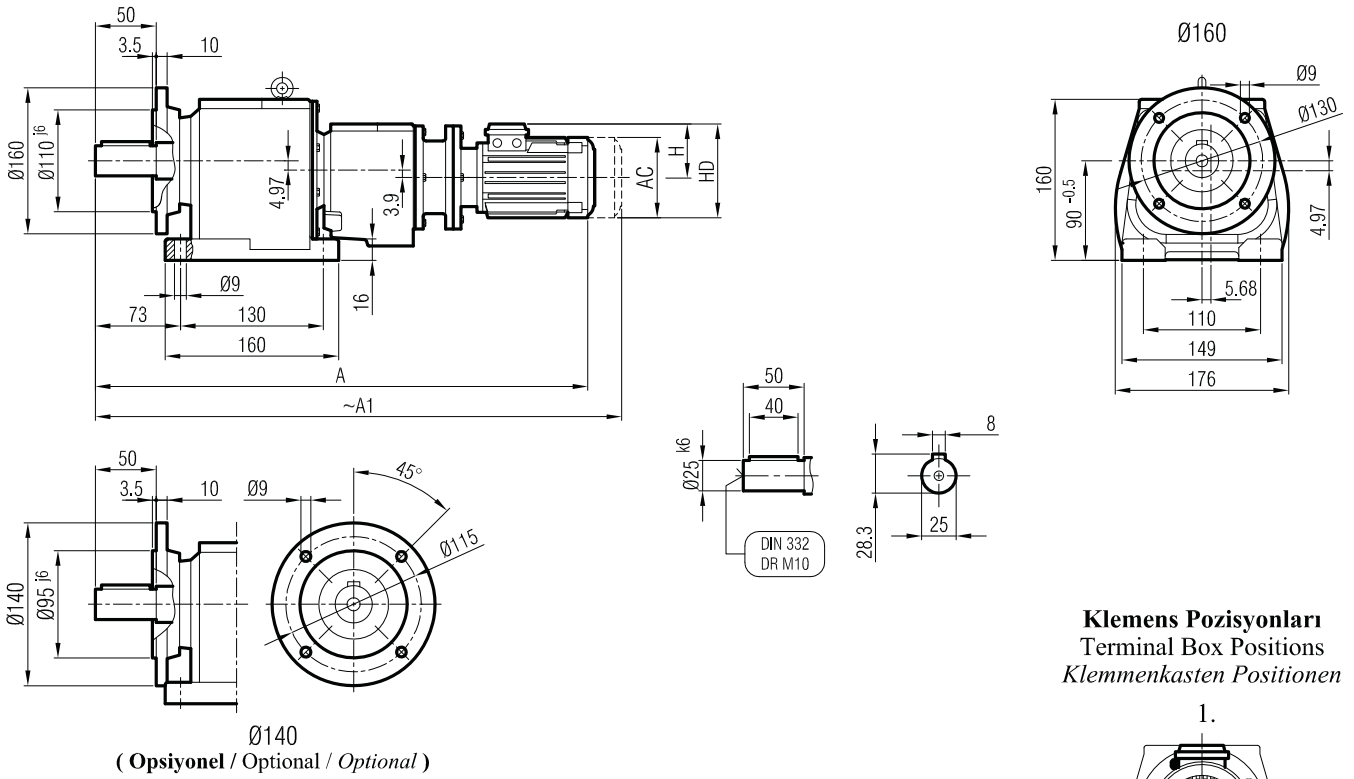
İRFP 52 İR 42 / İRFP 52 İR 43
İRFP 53 İR 42 / İRFP 53 İR 43



	A	Øp	Øf	ØD	s	k	m	n	Ød	l	t	u
63/B5	359	95	115	140	M8	35.5	8	4	11	23	12.8	4
71/B5	367	110	130	160	M8	44	9	4	14	30	16.3	5



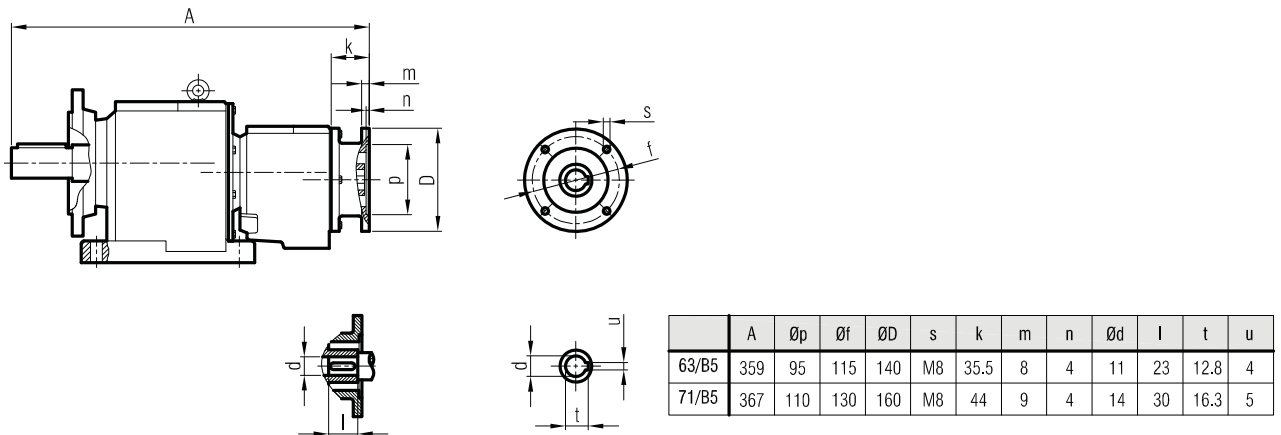
İRAFPM 53 İR 42



	63/B5	71/B5			
A	555	590			
A ₁	611	641			
H	97	111			
HD	160	182			
AC	121	138			

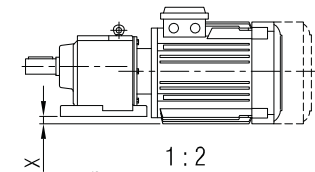
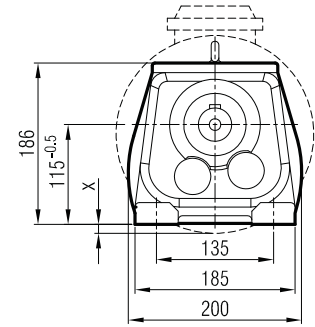
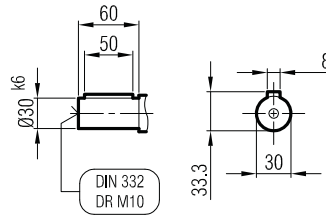
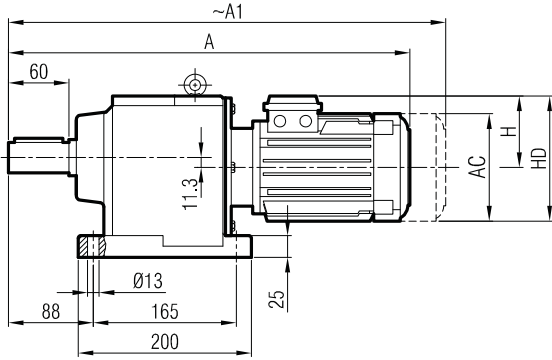
"A₁" Ölçüsü Frenli Motorlar içindir.
Dimension "A₁" is for motors with brake
Le dimensions "A₁" correspondent aux moteurs
équipés de freins.

İRAFP 52 İR 42 / İRAFP 52 İR 43
İRAFP 53 İR 42 / İRAFP 53 İR 43



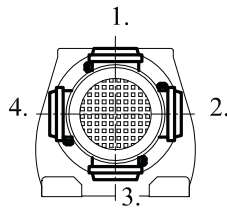


İRAM 621
İRAM 631



1 : 2
(Ölçek / Scale / échelle)

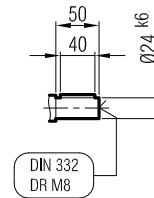
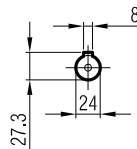
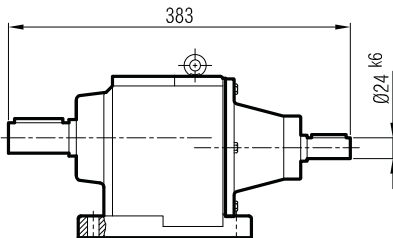
Klemens Pozisyonları
Terminal Box Positions
Klemmenkasten Positionen



	71	80	90 S	90 L	100	112	132 S
A	451	481	511	536	575	595	641
A ₁	502	550	577	602	653	678	741
H	111	118	126	126	134	145	168
HD	182	198	216	216	234	257	300
AC	138	156	176	176	194	218	257
x	-	-	-	-	-	5	25

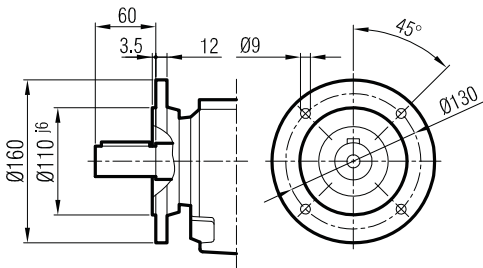
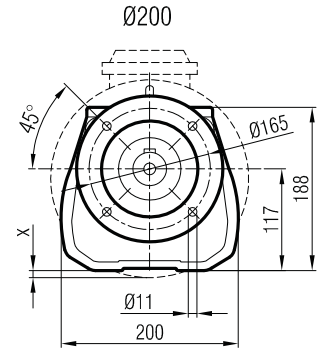
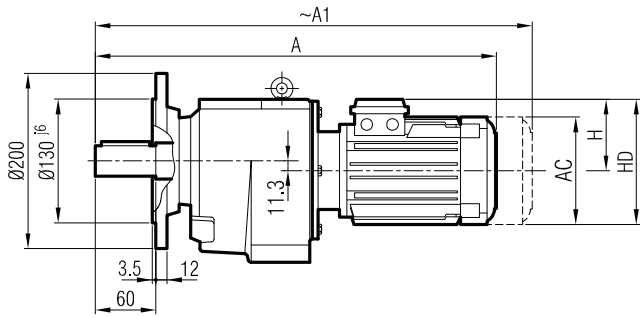
"A₁" Ölçüsü Frenli Motorlar içindir.
Dimension "A₁" is for motors with brake
Le dimensions "A₁" correspond aux moteurs équipés de freins.

İRA 621
İRA 631

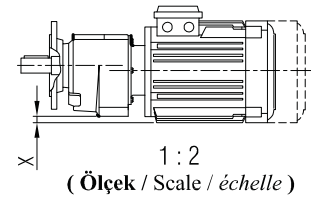
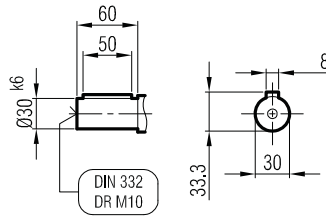




İRFM 621
İRFM 631

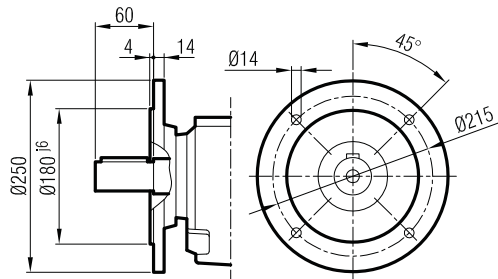
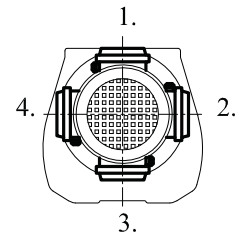


Ø160
(Opsiyonel / Optional / Optional)



1 : 2
(Ölçek / Scale / échelle)

Klemens Pozisyonları
Terminal Box Positions
Klemmenkasten Positionen

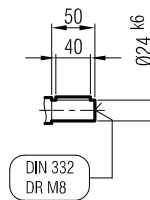
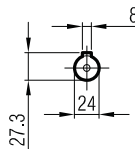
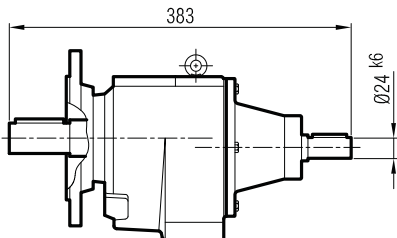


Ø250
(Opsiyonel / Optional / Optional)

	71	80	90 S	90 L	100	112	132 S
A	451	481	511	536	575	595	641
A1	502	550	577	602	653	678	741
H	111	118	126	126	134	145	168
HD	182	198	216	216	234	257	300
AC	138	156	176	176	194	218	257
X	-	-	-	-	-	5	25

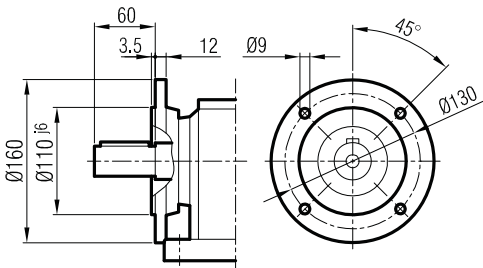
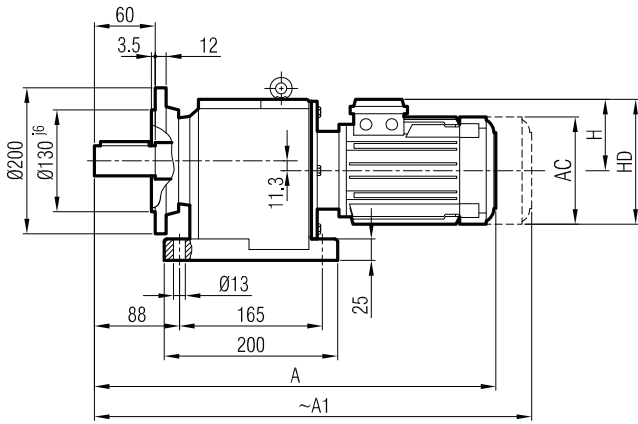
"A1" Ölçüsü Frenli Motorlar içindir.
Dimension "A1" is for motors with brake
Le dimensions "A1" correspond aux moteurs équipés de freins.

İRF 621
İRF 631

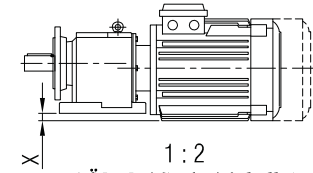
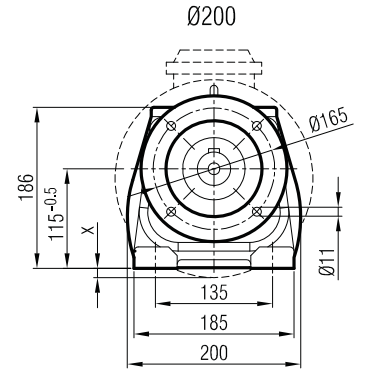
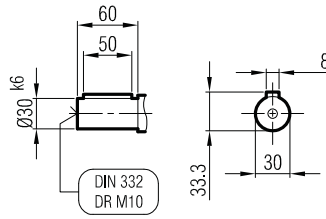




İRAFM 621
İRAFM 631

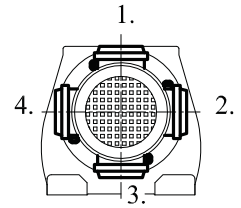


Ø160
(Opsiyonel / Optional / Optional)



1 : 2
(Ölçek / Scale / échelle)

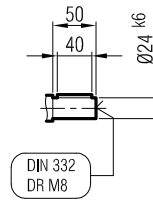
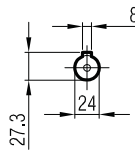
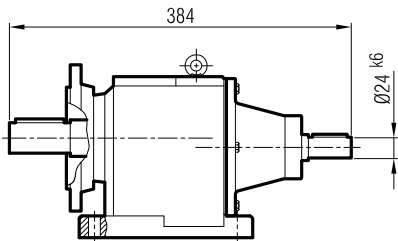
Klemens Pozisyonları
Terminal Box Positions
Klemmenkasten Positionen



	71	80	90 S	90 L	100	112	132 S
A	451	481	511	536	575	595	641
A ₁	502	550	577	602	653	678	741
H	111	118	126	126	134	145	168
HD	182	198	216	216	234	257	300
AC	138	156	176	176	194	218	257
x	-	-	-	-	-	5	25

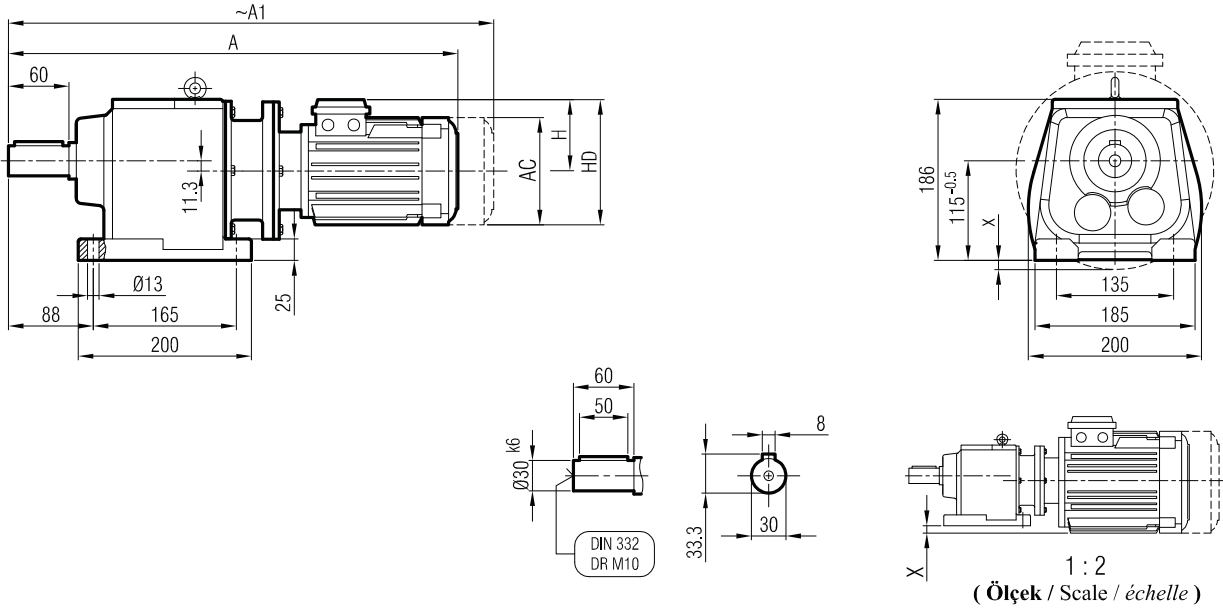
"A₁" Ölçüsü Frenli Motorlar içindir.
Dimension "A₁" is for motors with brake
Le dimensions "A₁" correspond aux moteurs équipés de freins.

İRAF 621
İRAF 631

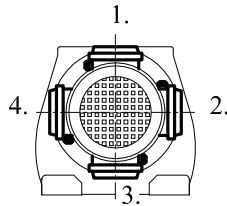




İRAPM 621
İRAPM 631



Klemens Pozisyonları
Terminal Box Positions
Klemmenkasten Positionen



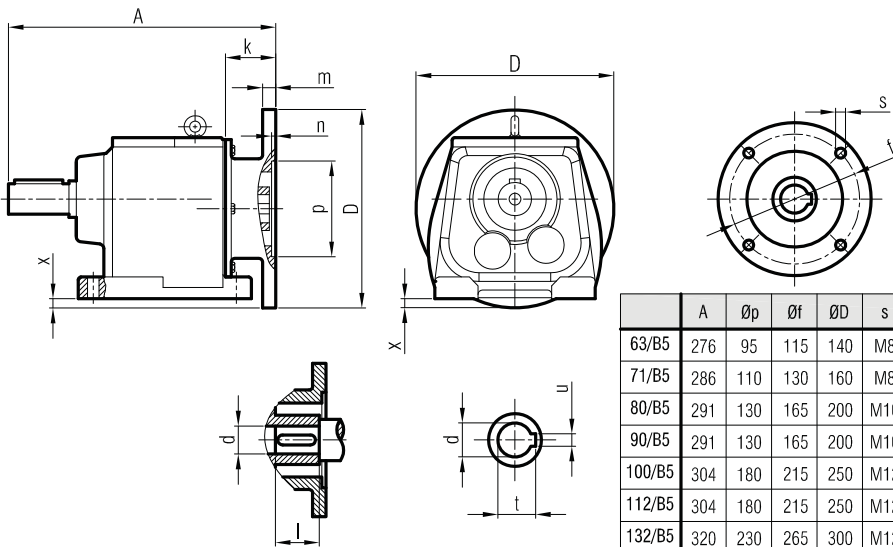
	63/B5	71/B5	80/B5	90 S/B5	90 L/B5	100/B5	112/B5	132 S/B5
A	473	508	534	550	575	620	640	700
A1	529	559	603	616	641	698	723	800
H	97	111	118	126	126	134	145	168
HD	160	182	198	216	216	234	257	300
AC	121	138	156	176	176	194	218	257
x	-	-	-	-	-	-	5	25

"A1" Ölçüsü Frenli Motorlar içindir.

Dimension "A1" is for motors with brake

Le dimensions "A1" correspondent aux moteurs équipés de freins.

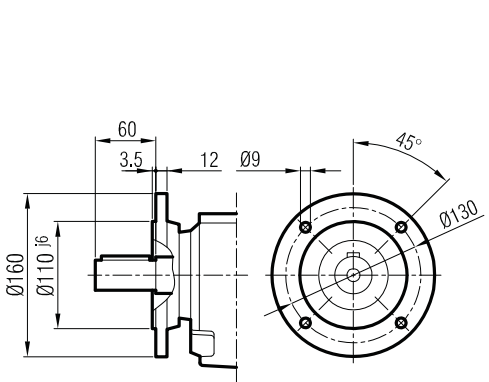
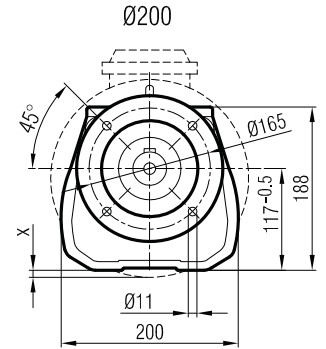
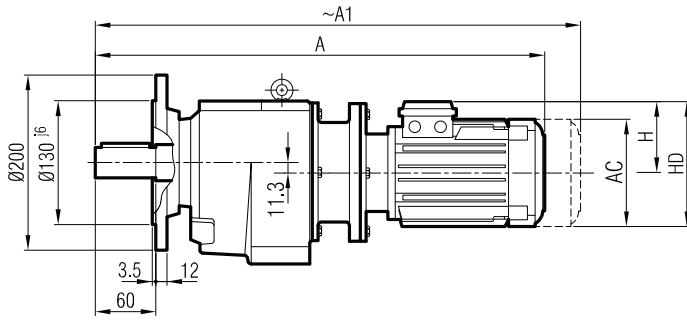
İRAP 621
İRAP 631



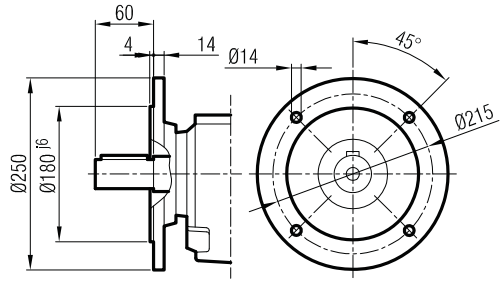
	A	Øp	Øf	ØD	s	k	m	n	Ød	l	t	u	x
63/B5	276	95	115	140	M8	35.5	8	4	11	23	12.8	4	-
71/B5	286	110	130	160	M8	45	9	4	14	30	16.3	5	-
80/B5	291	130	165	200	M10	50	12	5	19	40	21.8	6	-
90/B5	291	130	165	200	M10	50	12	5	24	50	27.3	8	-
100/B5	304	180	215	250	M12	63	14	5	28	60	31.3	8	22
112/B5	304	180	215	250	M12	63	14	5	28	60	31.3	8	22
132/B5	320	230	265	300	M12	79	17	6	38	80	41.3	10	47



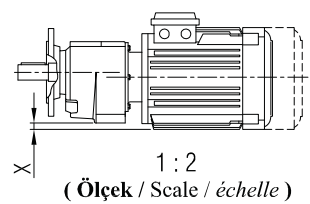
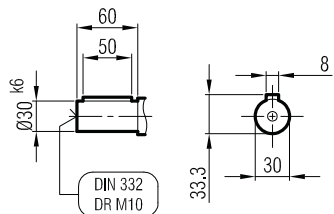
İRFPM 621
İRFPM 631



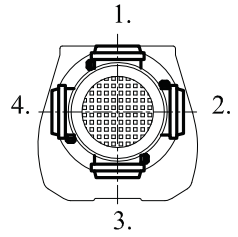
Ø160
(Opsiyonel / Optional / Optional)



Ø250
(Opsiyonel / Optional / Optional)



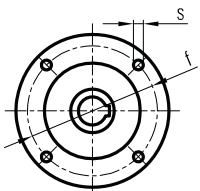
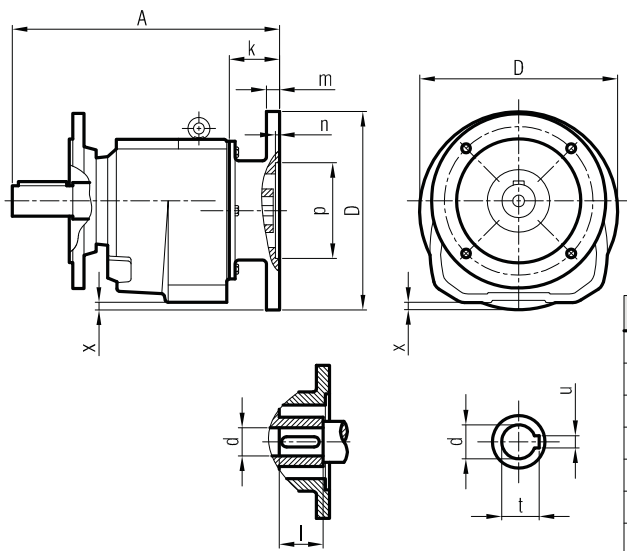
Klemens Pozisyonları
Terminal Box Positions
Klemmenkasten Positionen



	63/B5	71/B5	80/B5	90 S/B5	90 L/B5	100/B5	112/B5	132 S/B5
A	473	508	534	550	575	620	640	700
A ₁	529	559	603	616	641	698	723	800
H	97	111	118	126	126	134	145	168
HD	160	182	198	216	216	234	257	300
AC	121	138	156	176	176	194	218	257
x	-	-	-	-	-	-	5	25

"A₁" Ölçüsü Frenli Motorlar içindir.
Dimension "A₁" is for motors with brake
Le dimensions "A₁" correspondent aux moteurs équipés de freins.

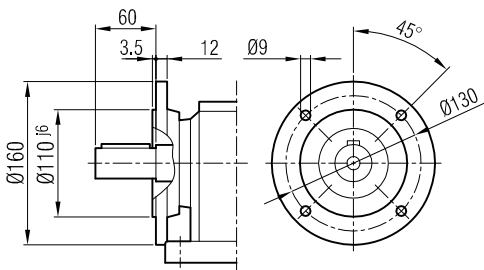
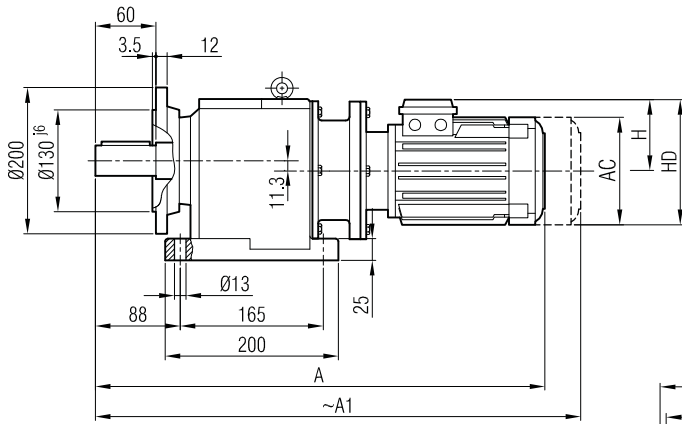
İRFP 621
İRFP 631



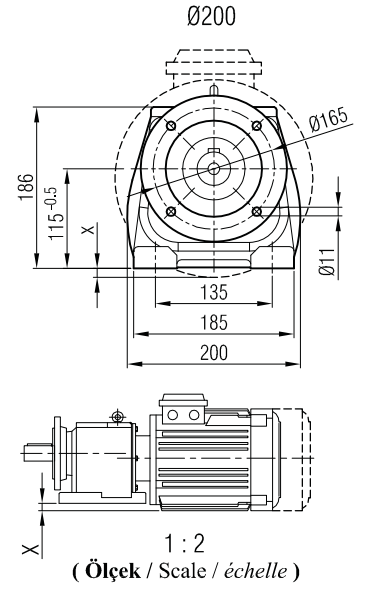
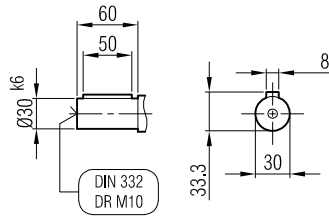
	A	Øp	Øf	ØD	s	k	m	n	Ød	l	t	u	x
63/B5	276	95	115	140	M8	35.5	8	4	11	23	12.8	4	-
71/B5	286	110	130	160	M8	45	9	4	14	30	16.3	5	-
80/B5	291	130	165	200	M10	50	12	5	19	40	21.8	6	-
90/B5	291	130	165	200	M10	50	12	5	24	50	27.3	8	-
100/B5	304	180	215	250	M12	63	14	5	28	60	31.3	8	22
112/B5	304	180	215	250	M12	63	14	5	28	60	31.3	8	22
132/B5	320	230	265	300	M12	79	17	6	38	80	41.3	10	47



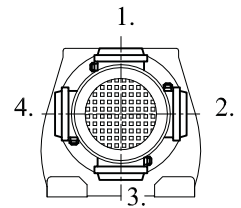
İRAFPM 621
İRAFPM 631



Ø160
(Opsiyonel / Optional / Optional)

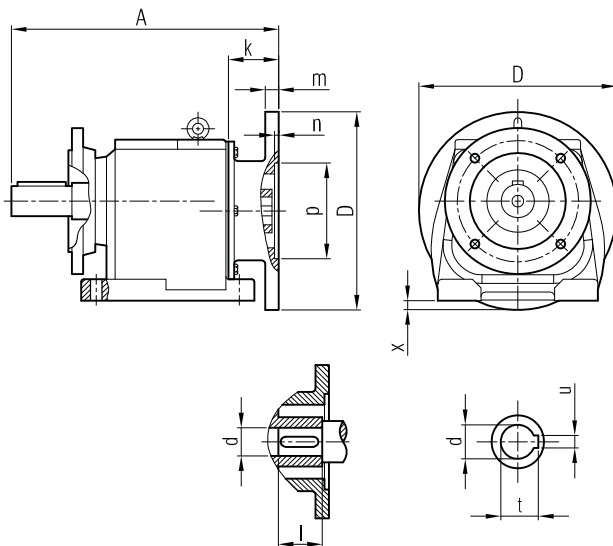


Klemens Pozisyonları
Terminal Box Positions
Klemmenkasten Positionen



	63/B5	71/B5	80/B5	90 S/B5	90 L/B5	100/B5	112/B5	132 S/B5
A	473	508	534	550	575	620	640	700
A ₁	529	559	603	616	641	698	723	800
H	97	111	118	126	126	134	145	168
HD	160	182	198	216	216	234	257	300
AC	121	138	156	176	176	194	218	257
x	-	-	-	-	-	-	5	25

İRAFP 621
İRAFP 631



"A₁" Ölçüsü Frenli Motorlar içindir.

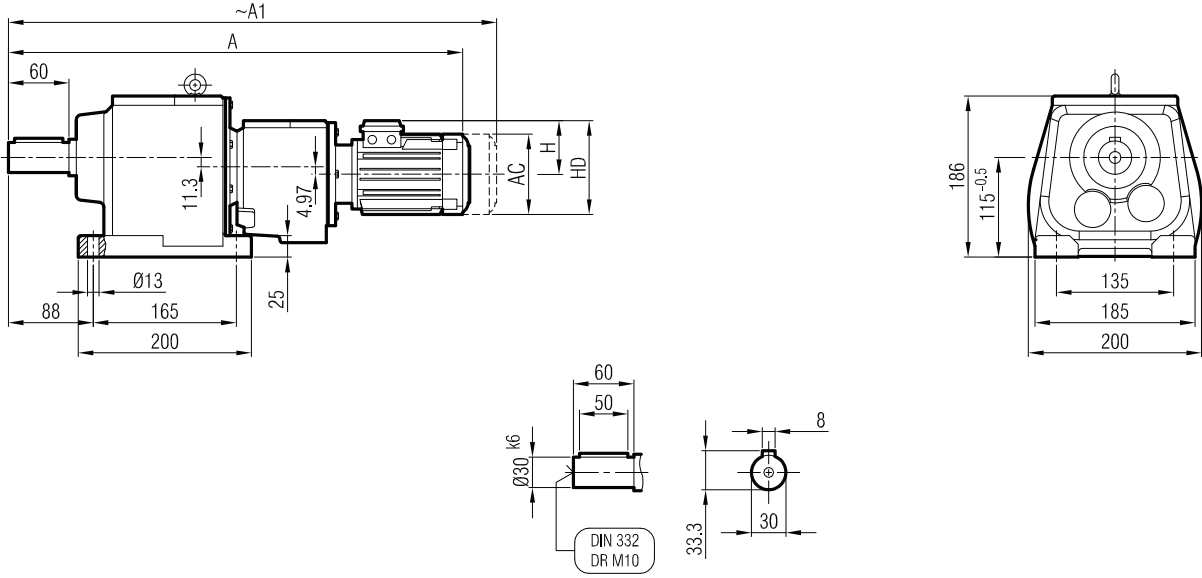
Dimension "A₁" is for motors with brake

Le dimensions "A₁" correspondent aux moteurs équipés de freins.

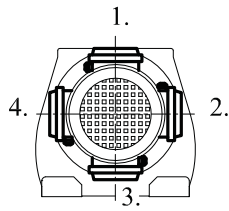
	A	Øp	Øf	ØD	s	k	m	n	Ød	l	t	u	x
63/B5	276	95	115	140	M8	35,5	8	4	11	23	12,8	4	-
71/B5	286	110	130	160	M8	45	9	4	14	30	16,3	5	-
80/B5	291	130	165	200	M10	50	12	5	19	40	21,8	6	-
90/B5	291	130	165	200	M10	50	12	5	24	50	27,3	8	-
100/B5	304	180	215	250	M12	63	14	5	28	60	31,3	8	22
112/B5	304	180	215	250	M12	63	14	5	28	60	31,3	8	22
132/B5	320	230	265	300	M12	79	17	6	38	80	41,3	10	47



İRAM 621 İR 52
İRAM 631 İR 52



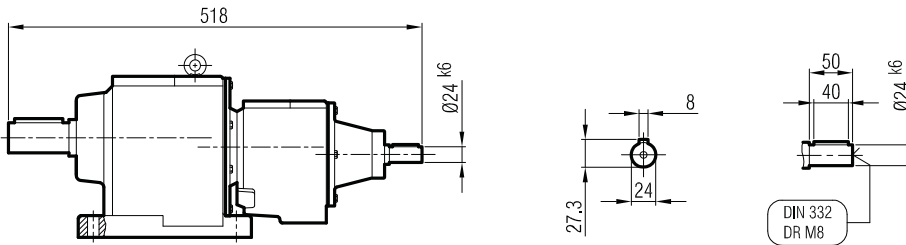
Klemens Pozisyonları
Terminal Box Positions
Klemmenkasten Positionen



	71				
A	606				
A ₁	567				
H	111				
HD	182				
AC	138				

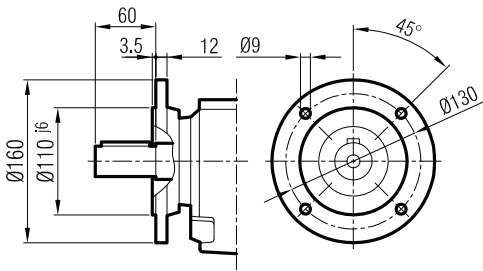
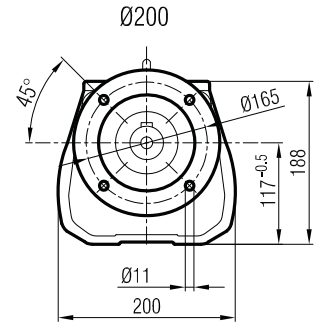
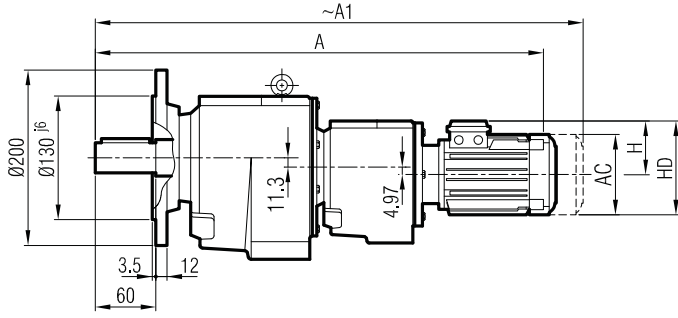
"A₁" Ölçüsü Frenli Motorlar içindir.
Dimension "A₁" is for motors with brake
Le dimensions "A₁" correspond aux moteurs
équipés de freins.

İRA 621 İR 52 / İRA 621 İR 53
İRA 631 İR 52 / İRA 631 İR 53

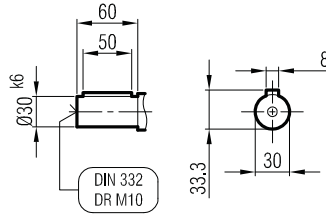




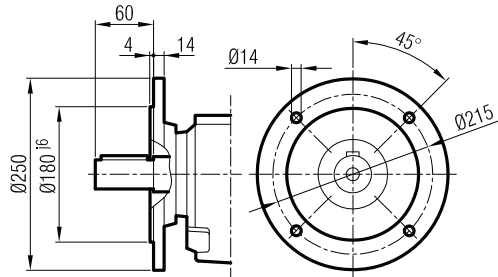
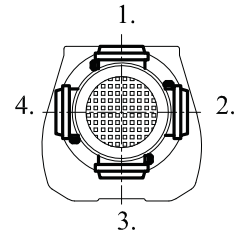
İRFM 621 İR 52
İRFM 631 İR 52



Ø160
(Opsiyonel / Optional / Optional)



Klemens Pozisyonları
Terminal Box Positions
Klemmenkasten Positionen

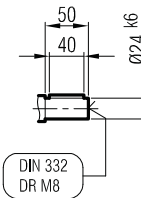
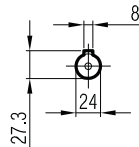
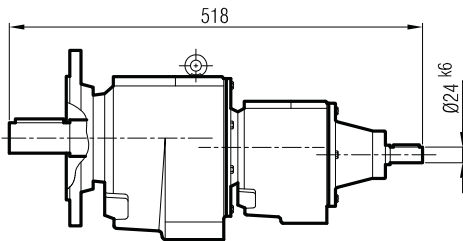


Ø250
(Opsiyonel / Optional / Optional)

	71				
A	606				
A1	567				
H	111				
HD	182				
AC	138				

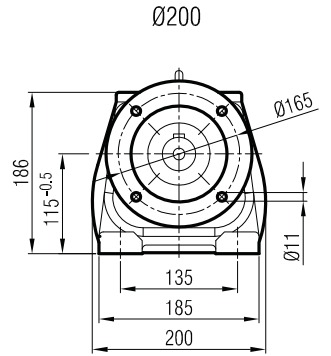
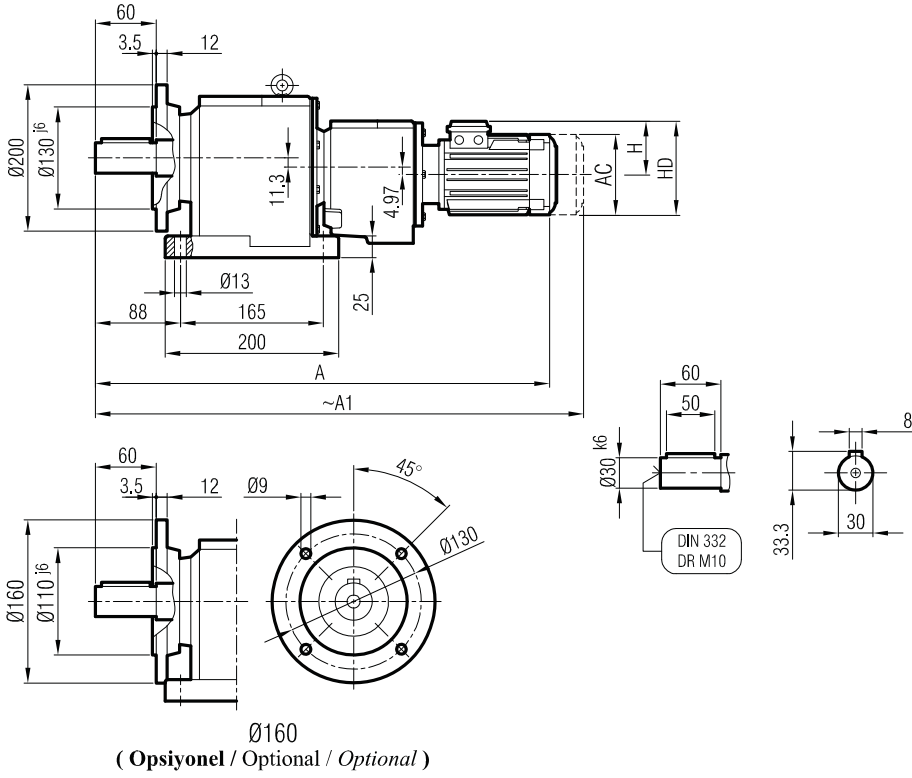
"A1" Ölçüsü Frenli Motorlar içindir.
Dimension "A1" is for motors with brake
Le dimensions "A1" correspondent aux moteurs
équipés de freins.

İRF 621 İR 52 / İRF 621 İR 53
İRF 631 İR 52 / İRF 631 İR 53

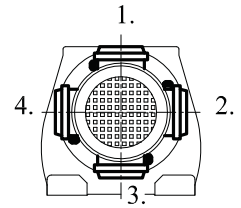




İRAFM 621 İR 52
İRAFM 631 İR 52



Klemens Pozisyonları
Terminal Box Positions
Klemmenkasten Positionen

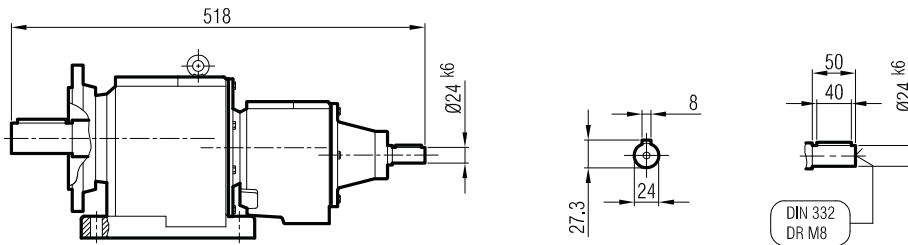


Ø160
(Opsiyonel / Optional / Optional)

	71				
A	606				
A ₁	567				
H	111				
HD	182				
AC	138				

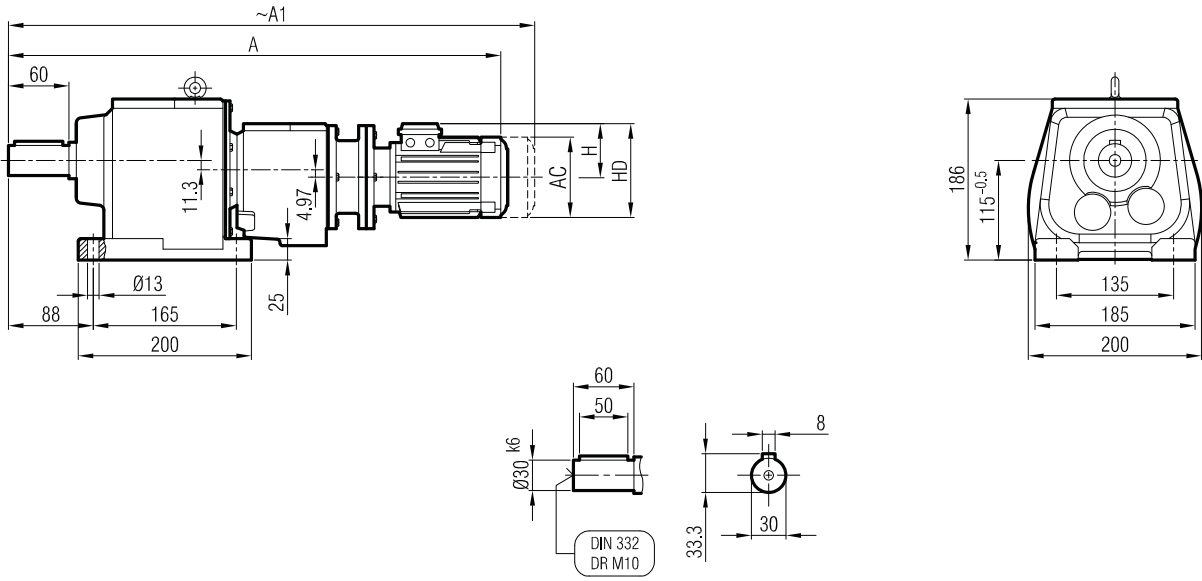
"A₁" Ölçüsü Frenli Motorlar içindir.
Dimension "A₁" is for motors with brake
Le dimensions "A₁" correspond aux moteurs
équipés de freins.

İRAF 621 İR 52 / İRAF 621 İR 53
İRAF 631 İR 52 / İRAF 631 İR 53

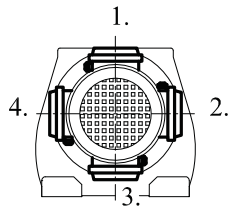




İRAPM 621 İR 52
İRAPM 631 İR 52



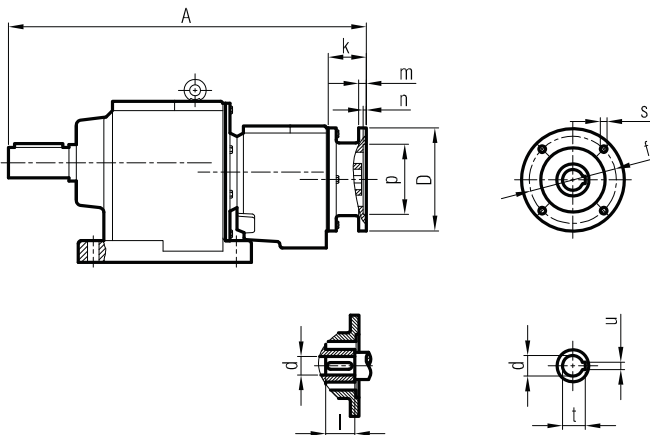
Klemens Pozisyonları
Terminal Box Positions
Klemmenkasten Positionen



	63/B5	71/B5			
A	621	655			
A ₁	677	706			
H	97	111			
HD	160	182			
AC	121	138			

"A₁" Ölçüsü Frenli Motorlar içindir.
Dimension "A₁" is for motors with brake
Le dimensions "A₁" correspondent aux moteurs équipés de freins.

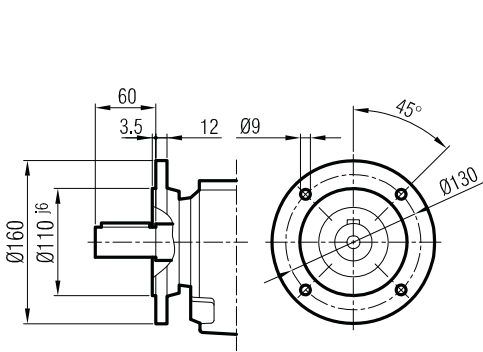
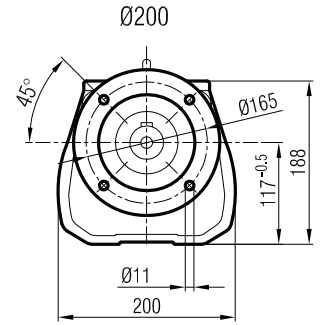
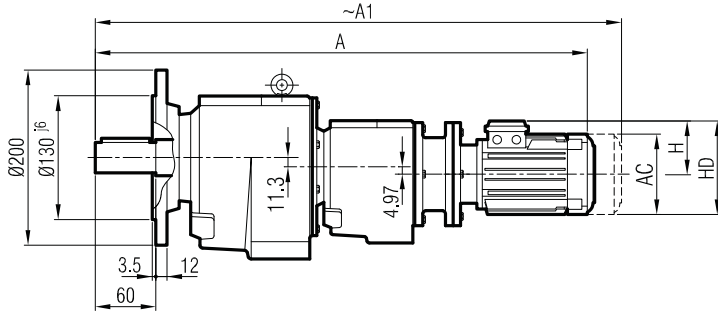
İRAP 621 İR 52 / İRAP 621 İR 53
İRAP 631 İR 52 / İRAP 631 İR 53



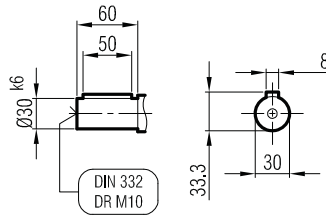
	A	Øp	Øf	ØD	s	k	m	n	Ød	l	t	u
63/B5	424	95	115	140	M8	35.5	8	4	11	23	12.8	4
71/B5	433	110	130	160	M8	44	9	4	14	30	16.3	5



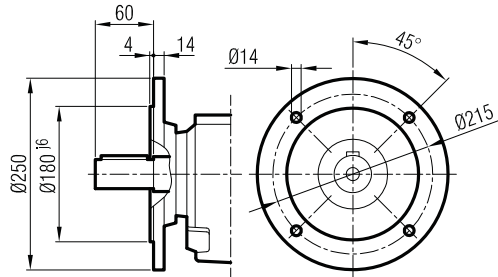
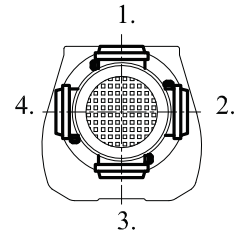
İRFPM 621 İR 52
İRFPM 631 İR 52



Ø160
(Opsiyonel / Optional / Optional)



Klemens Pozisyonları
Terminal Box Positions
Klemmenkasten Positionen

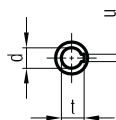
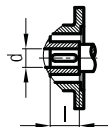
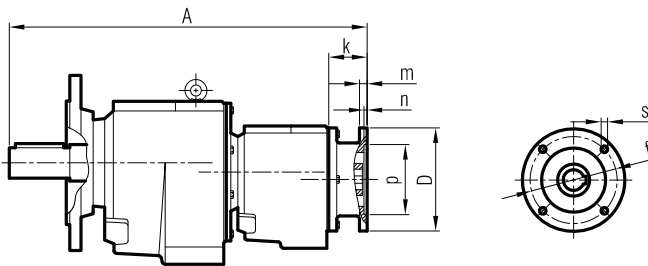


Ø250
(Opsiyonel / Optional / Optional)

	63/B5	71/B5			
A	621	655			
A ₁	677	706			
H	97	111			
HD	160	182			
AC	121	138			

"A₁" Ölçüsü Frenli Motorlar içindir.
Dimension "A₁" is for motors with brake
Le dimensions "A₁" correspond aux moteurs
équipés de freins.

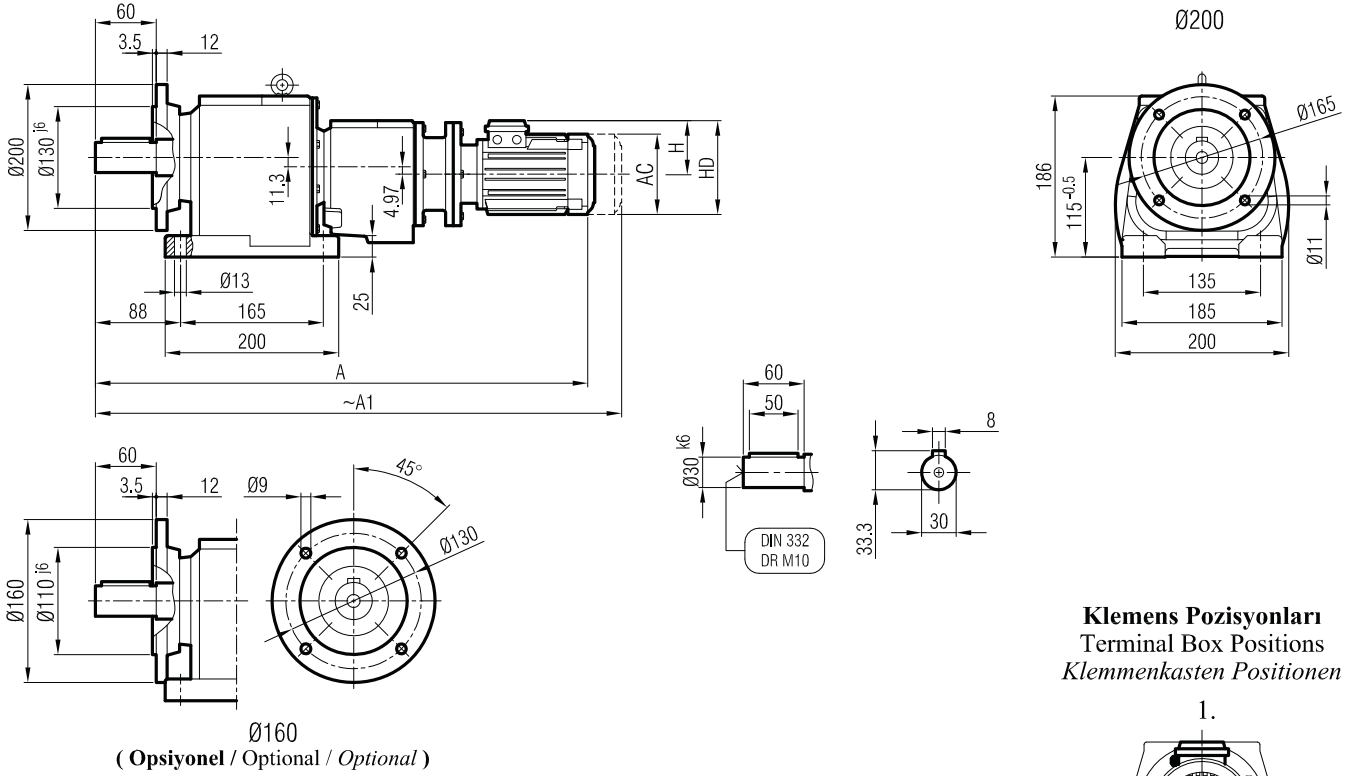
İRFP 621 İR 52 / İRFP 621 İR 53
İRFP 631 İR 52 / İRFP 631 İR 53



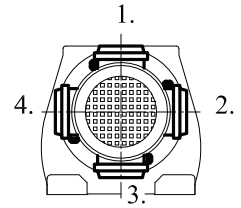
	A	Øp	Øf	ØD	s	k	m	n	Ød	l	t	u
63/B5	424	95	115	140	M8	35.5	8	4	11	23	12.8	4
71/B5	433	110	130	160	M8	44	9	4	14	30	16.3	5



İRAFPM 621 İR 52
İRAFPM 631 İR 52

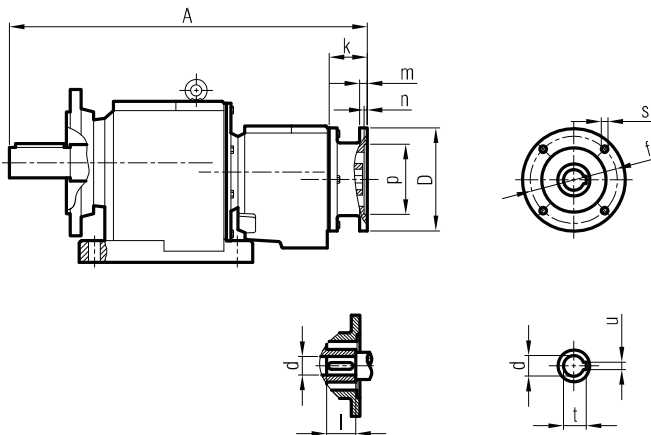


Klemens Pozisyonları
Terminal Box Positions
Klemmenkasten Positionen



	63/B5	71/B5			
A	621	655			
A ₁	677	706			
H	97	111			
HD	160	182			
AC	121	138			

İRAFP 621 İR 52 / İRAFP 621 İR 53
İRAFP 631 İR 52 / İRAFP 631 İR 53

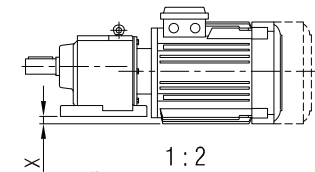
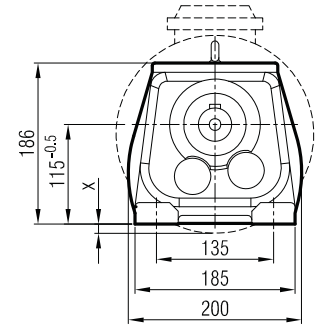
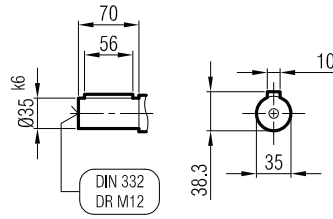
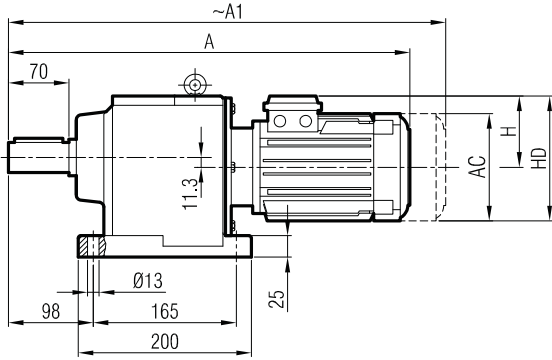


	A	Øp	Øf	ØD	s	k	m	n	Ød	l	t	u
63/B5	424	95	115	140	M8	35.5	8	4	11	23	12.8	4
71/B5	433	110	130	160	M8	44	9	4	14	30	16.3	5

"A₁" Ölçüsü Frenli Motorlar içindir.
Dimension "A₁" is for motors with brake
Le dimensions "A₁" correspondent aux moteurs
équipés de freins.

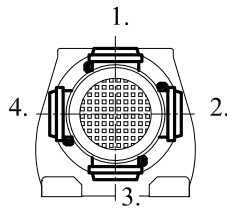


İRAM 62
İRAM 63



1 : 2
(Ölçek / Scale / échelle)

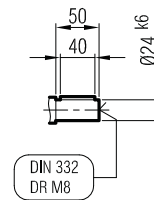
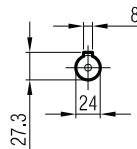
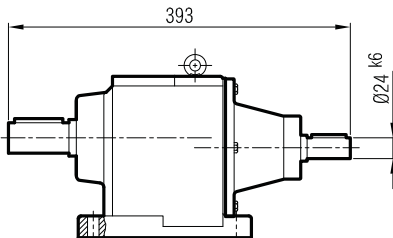
Klemens Pozisyonları
Terminal Box Positions
Klemmenkasten Positionen



	71	80	90 S	90 L	100	112	132 S
A	461	491	521	546	585	605	651
A ₁	512	560	587	612	663	688	751
H	111	118	126	126	134	145	168
HD	182	198	216	216	234	257	300
AC	138	156	176	176	194	218	257
x	-	-	-	-	-	5	25

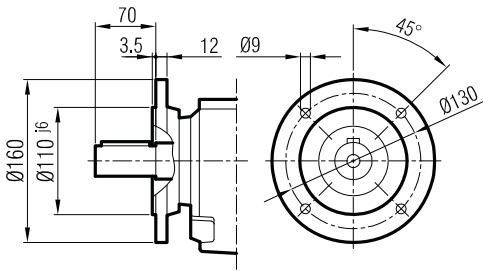
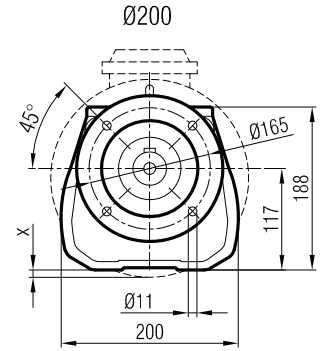
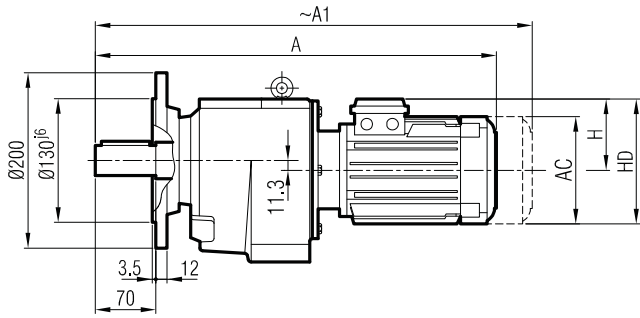
"A₁" Ölçüsü Frenli Motorlar içindir.
Dimension "A₁" is for motors with brake
Le dimensions "A₁" correspond aux moteurs équipés de freins.

İRA 62
İRA 63

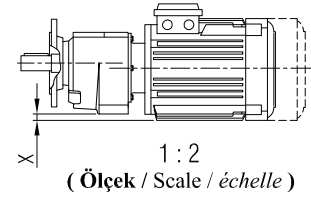
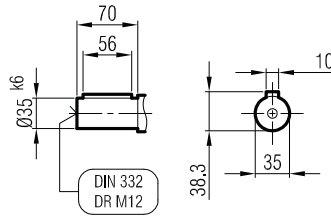




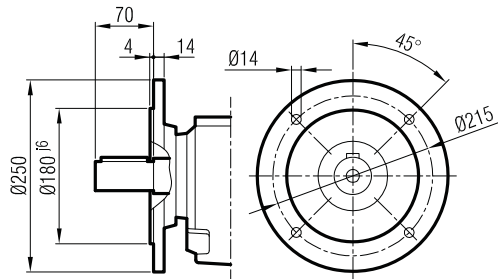
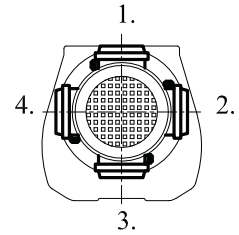
İRFM 62
İRFM 63



Ø160
(Opsiyonel / Optional / Optional)



Klemens Pozisyonları
Terminal Box Positions
Klemmenkasten Positionen

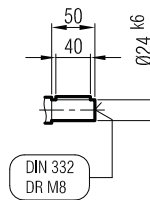
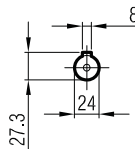
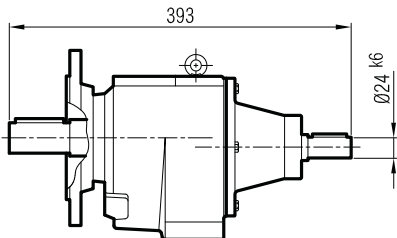


Ø250
(Opsiyonel / Optional / Optional)

	71	80	90 S	90 L	100	112	132 S
A	461	491	521	546	585	605	651
A1	512	560	587	612	663	688	751
H	111	118	126	126	134	145	168
HD	182	198	216	216	234	257	300
AC	138	156	176	176	194	218	257
X	-	-	-	-	-	5	25

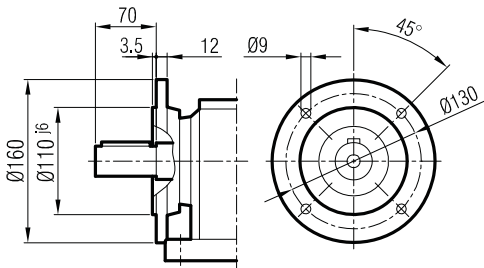
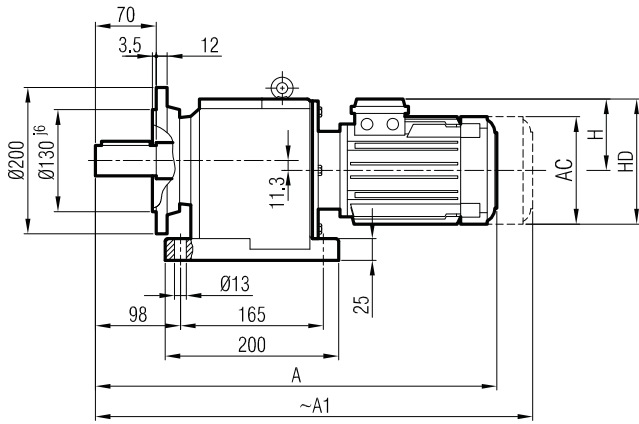
"A1" Ölçüsü Frenli Motorlar içindir.
Dimension "A1" is for motors with brake
Le dimensions "A1" correspond aux moteurs équipés de freins.

İRF 62
İRF 63

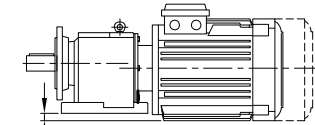
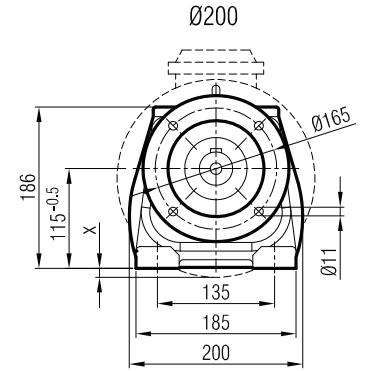
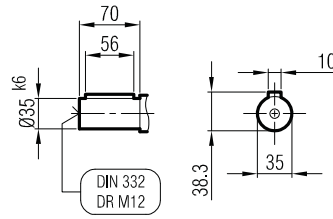




İRAFM 62
İRAFM 63

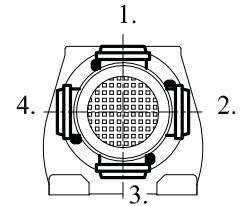


Ø160
(Opsiyonel / Optional / Optional)



1 : 2
(Ölçek / Scale / échelle)

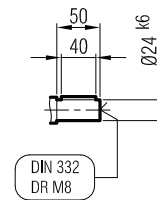
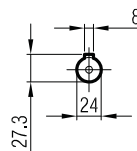
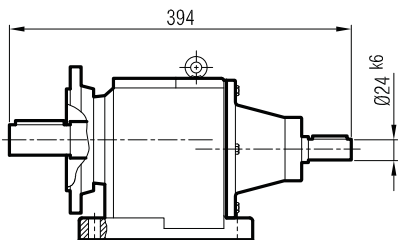
Klemens Pozisyonları
Terminal Box Positions
Klemmenkasten Positionen



	71	80	90 S	90 L	100	112	132 S
A	461	491	521	546	585	605	651
A ₁	512	560	587	612	663	688	751
H	111	118	126	126	134	145	168
HD	182	198	216	216	234	257	300
AC	138	156	176	176	194	218	257
x	-	-	-	-	-	5	25

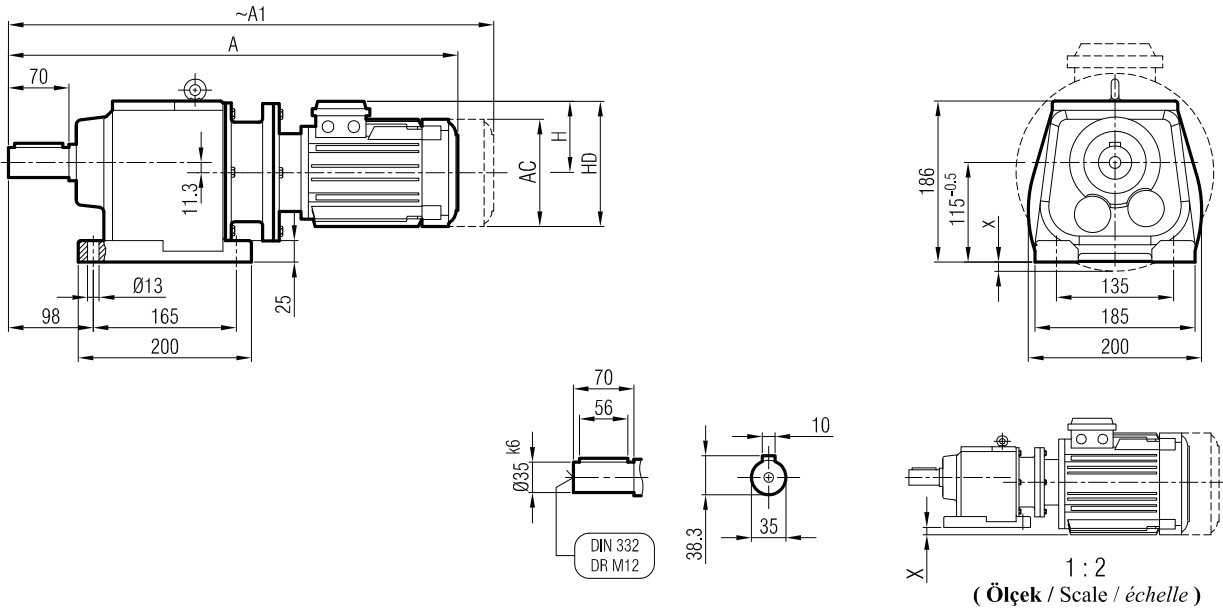
"A₁" Ölçüsü Frenli Motorlar içindir.
Dimension "A₁" is for motors with brake
Le dimensions "A₁" correspond aux moteurs équipés de freins.

İRAF 62
İRAF 63

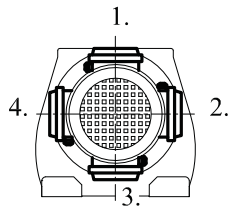




İRAPM 62
İRAPM 63



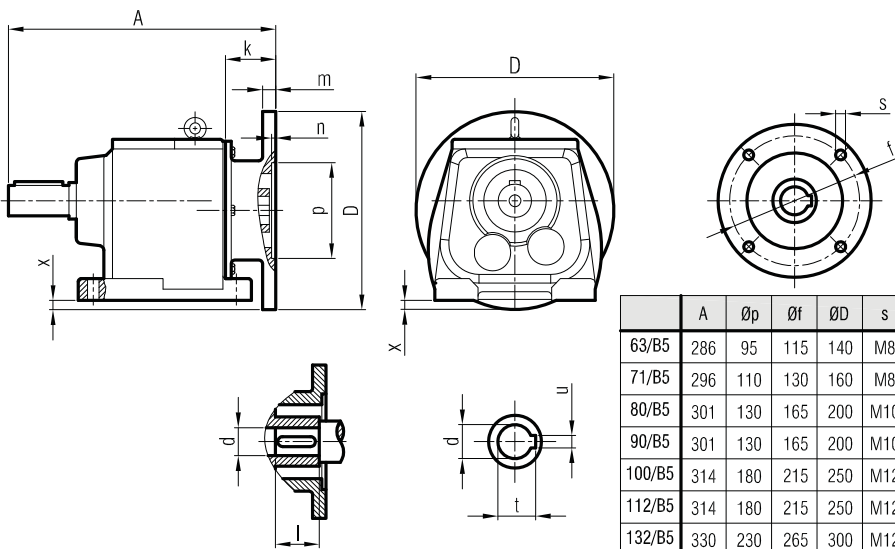
Klemens Pozisyonları
Terminal Box Positions
Klemmenkasten Positionen



	63/B5	71/B5	80/B5	90 S/B5	90 L/B5	100/B5	112/B5	132 S/B5
A	483	518	544	560	585	630	650	710
A1	539	569	613	626	651	708	733	810
H	97	111	118	126	126	134	145	168
HD	160	182	198	216	216	234	257	300
AC	121	138	156	176	176	194	218	257
x	-	-	-	-	-	-	5	25

"A1" Ölçüsü Frenli Motorlar içindir.
Dimension "A1" is for motors with brake
Le dimensions "A1" correspondent aux moteurs équipés de freins.

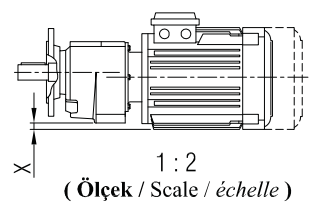
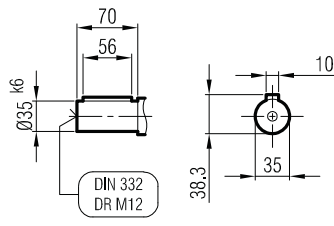
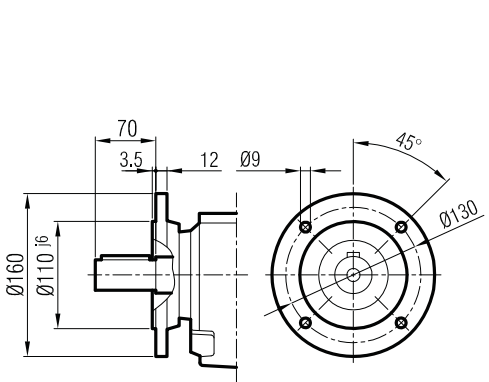
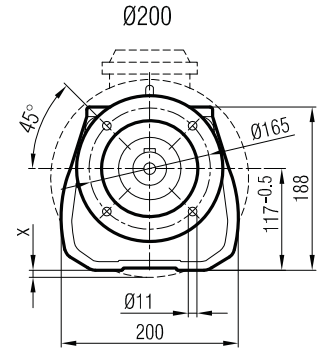
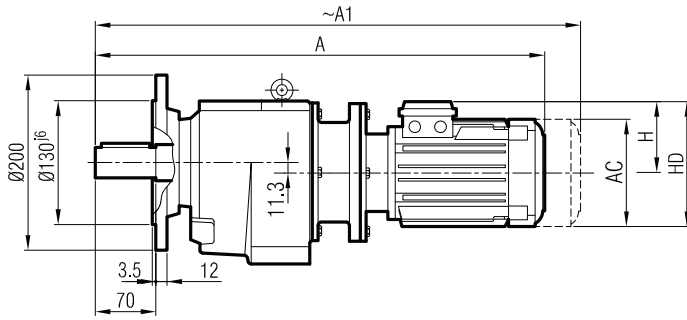
İRAP 62
İRAP 63



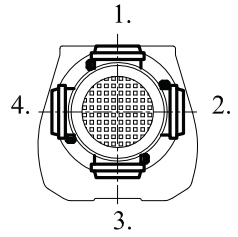
	A	Øp	Øf	ØD	s	k	m	n	Ød	l	t	u	x
63/B5	286	95	115	140	M8	35,5	8	4	11	23	12,8	4	-
71/B5	296	110	130	160	M8	45	9	4	14	30	16,3	5	-
80/B5	301	130	165	200	M10	50	12	5	19	40	21,8	6	-
90/B5	301	130	165	200	M10	50	12	5	24	50	27,3	8	-
100/B5	314	180	215	250	M12	63	14	5	28	60	31,3	8	22
112/B5	314	180	215	250	M12	63	14	5	28	60	31,3	8	22
132/B5	330	230	265	300	M12	79	17	6	38	80	41,3	10	47



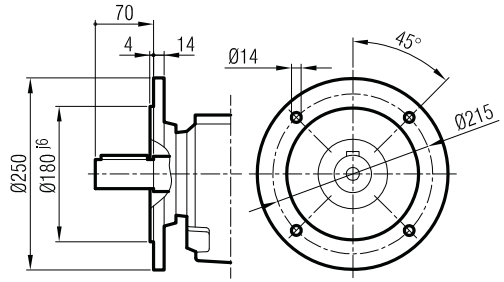
İRFPM 62
İRFPM 63



Klemens Pozisyonları
Terminal Box Positions
Klemmenkasten Positionen



Ø160
(Opsiyonel / Optional / Optional)

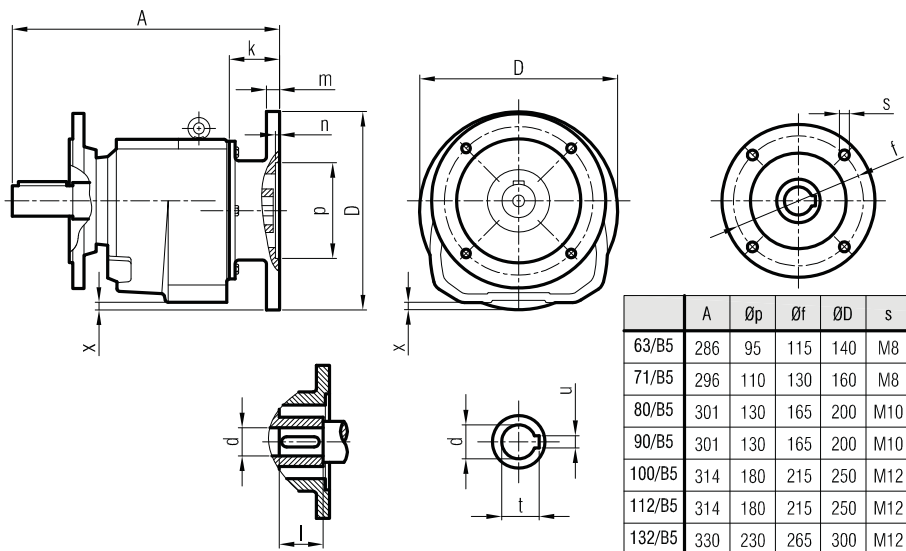


Ø250
(Opsiyonel / Optional / Optional)

	63/B5	71/B5	80/B5	90 S/B5	90 L/B5	100/B5	112/B5	132 S/B5
A	483	518	544	560	585	630	650	710
A ₁	539	569	613	626	651	708	733	810
H	97	111	118	126	126	134	145	168
HD	160	182	198	216	216	234	257	300
AC	121	138	156	176	176	194	218	257
x	-	-	-	-	-	-	5	25

"A₁" Ölçüsü Frenli Motorlar içindir.
Dimension "A₁" is for motors with brake
Le dimensions "A₁" correspondent aux moteurs équipés de freins.

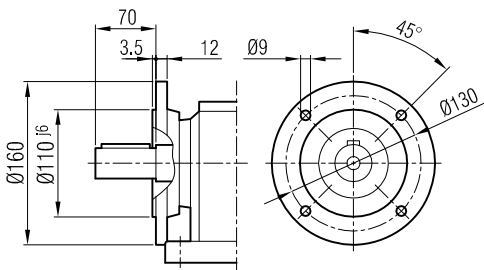
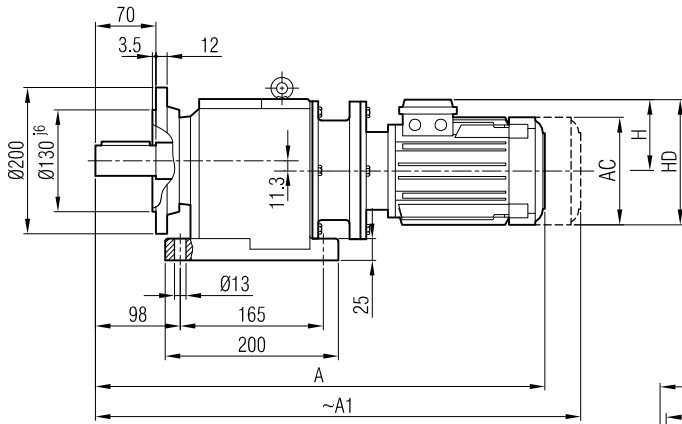
İRFP 62
İRFP 63



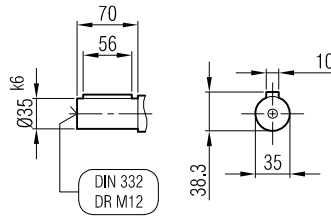
	A	Øp	Øf	ØD	s	k	m	n	Ød	l	t	u	x
63/B5	286	95	115	140	M8	35.5	8	4	11	23	12.8	4	-
71/B5	296	110	130	160	M8	45	9	4	14	30	16.3	5	-
80/B5	301	130	165	200	M10	50	12	5	19	40	21.8	6	-
90/B5	301	130	165	200	M10	50	12	5	24	50	27.3	8	-
100/B5	314	180	215	250	M12	63	14	5	28	60	31.3	8	22
112/B5	314	180	215	250	M12	63	14	5	28	60	31.3	8	22
132/B5	330	230	265	300	M12	79	17	6	38	80	41.3	10	47



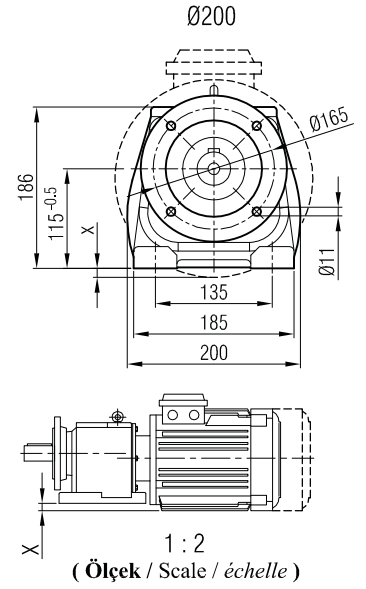
İRAFPM 62
İRAFPM 63



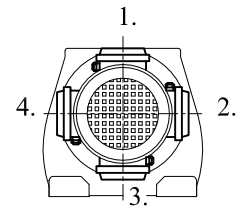
Ø160
(Opsiyonel / Optional / Optional)



DIN 332
DR M12

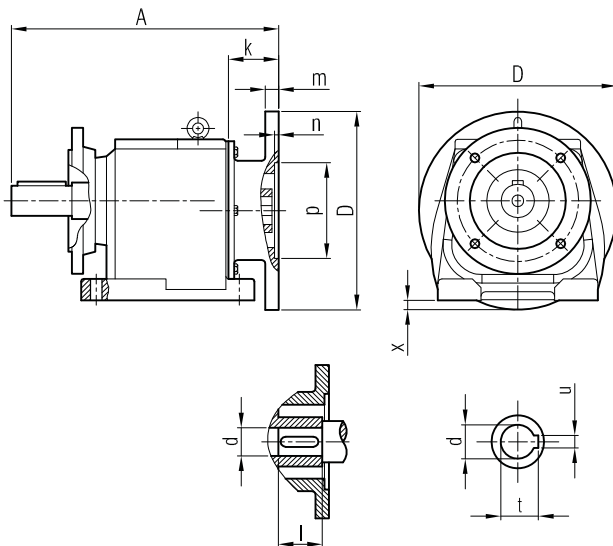


Klemens Pozisyonları
Terminal Box Positions
Klemmenkasten Positionen



	63/B5	71/B5	80/B5	90 S/B5	90 L/B5	100/B5	112/B5	132 S/B5
A	483	518	544	560	585	630	650	710
A ₁	539	569	613	626	651	708	733	810
H	97	111	118	126	126	134	145	168
HD	160	182	198	216	216	234	257	300
AC	121	138	156	176	176	194	218	257
x	-	-	-	-	-	-	5	25

İRAFP 62
İRAFP 63



"A₁" Ölçüsü Frenli Motorlar içindir.

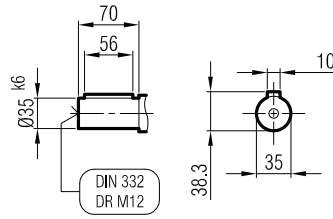
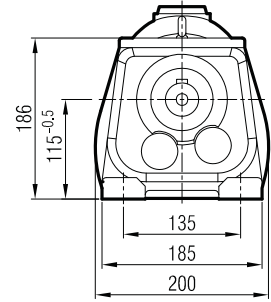
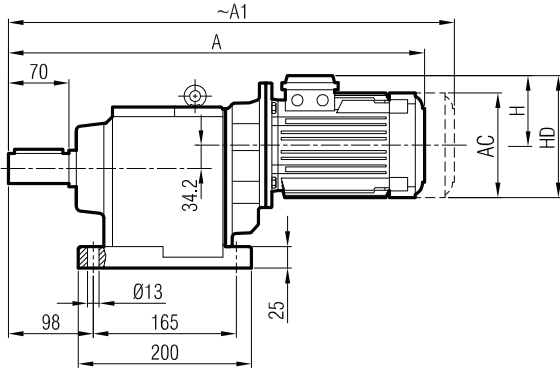
Dimension "A₁" is for motors with brake

Le dimensions "A₁" correspondent aux moteurs équipés de freins.

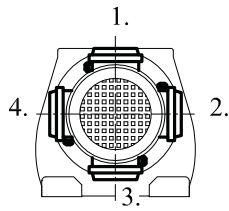
	A	Øp	Øf	ØD	s	k	m	n	Ød	l	t	u	x
63/B5	286	95	115	140	M8	35,5	8	4	11	23	12,8	4	-
71/B5	296	110	130	160	M8	45	9	4	14	30	16,3	5	-
80/B5	301	130	165	200	M10	50	12	5	19	40	21,8	6	-
90/B5	301	130	165	200	M10	50	12	5	24	50	27,3	8	-
100/B5	314	180	215	250	M12	63	14	5	28	60	31,3	8	22
112/B5	314	180	215	250	M12	63	14	5	28	60	31,3	8	22
132/B5	330	230	265	300	M12	79	17	6	38	80	41,3	10	47



İRAM 64



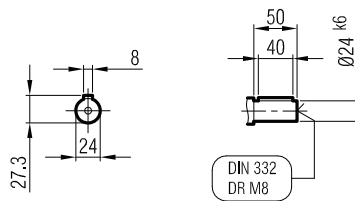
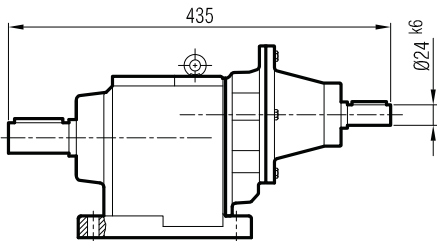
Klemens Pozisyonları
Terminal Box Positions
Klemmenkasten Positionen



	71	80	90 S	90 L		
A	523	551	580	605		
A ₁	574	620	646	671		
H	111	118	126	126		
HD	182	198	216	216		
AC	138	156	176	176		

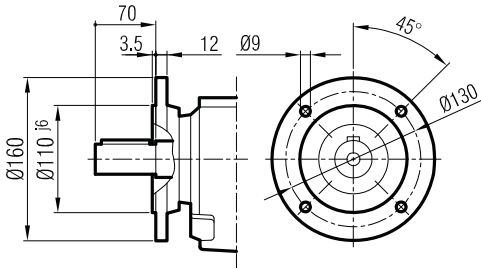
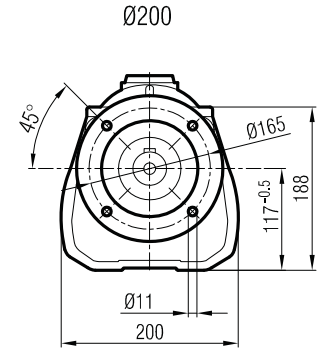
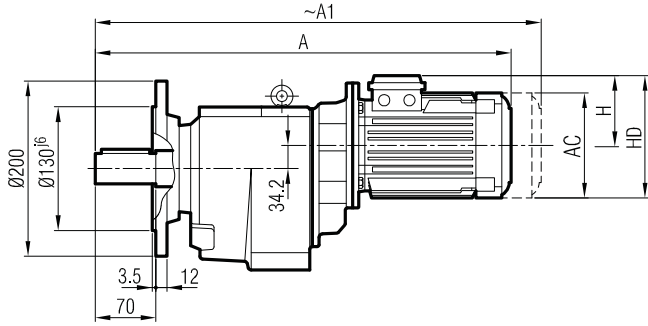
"A₁" Ölçüsü Frenli Motorlar içindir.
Dimension "A₁" is for motors with brake
Le dimensions "A₁" correspond aux moteurs équipés de freins.

İRRA 64

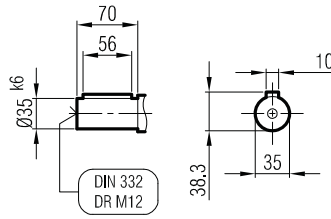




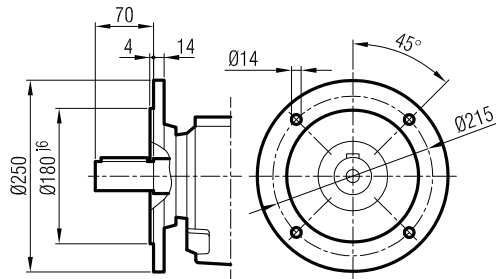
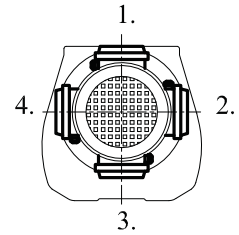
İRFM 64



Ø160
(Opsiyonel / Optional / Optional)



Klemens Pozisyonları
Terminal Box Positions
Klemmenkasten Positionen

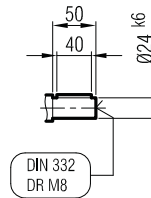
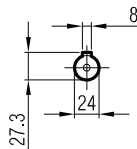
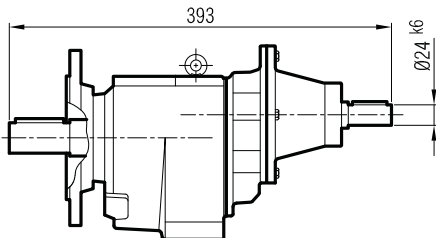


Ø250
(Opsiyonel / Optional / Optional)

	71	80	90 S	90 L		
A	523	551	580	605		
A1	574	620	646	671		
H	111	118	126	126		
HD	182	198	216	216		
AC	138	156	176	176		

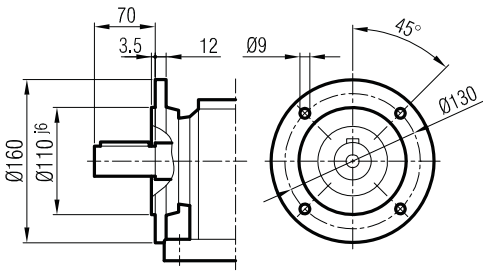
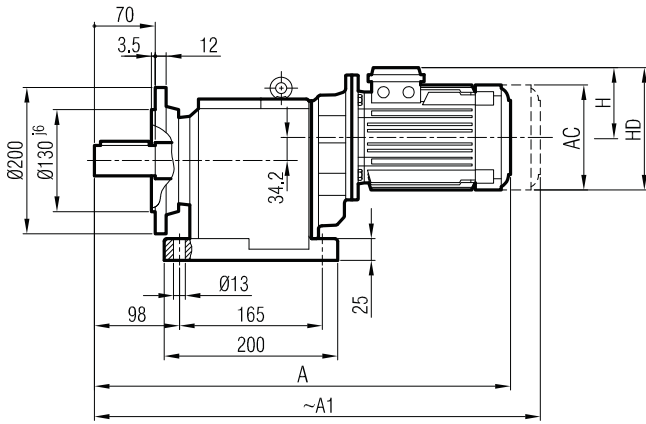
"A1" Ölçüsü Frenli Motorlar içindir.
Dimension "A1" is for motors with brake
Le dimensions "A1" correspond aux moteurs équipés de freins.

İRF 64

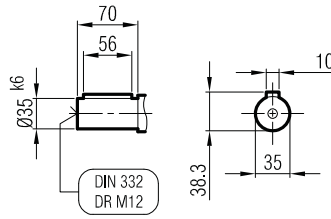




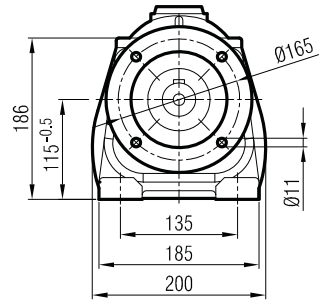
İRAFM 64



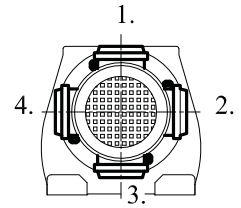
Ø160
(Opsiyonel / Optional / Optional)



Ø200



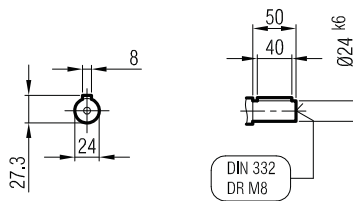
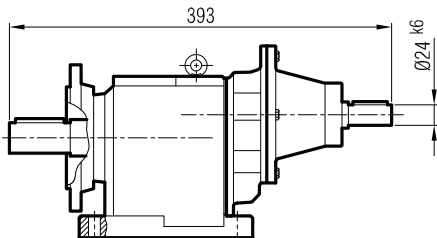
Klemens Pozisyonları
Terminal Box Positions
Klemmenkasten Positionen



	71	80	90 S	90 L		
A	523	551	580	605		
A ₁	574	620	646	671		
H	111	118	126	126		
HD	182	198	216	216		
AC	138	156	176	176		

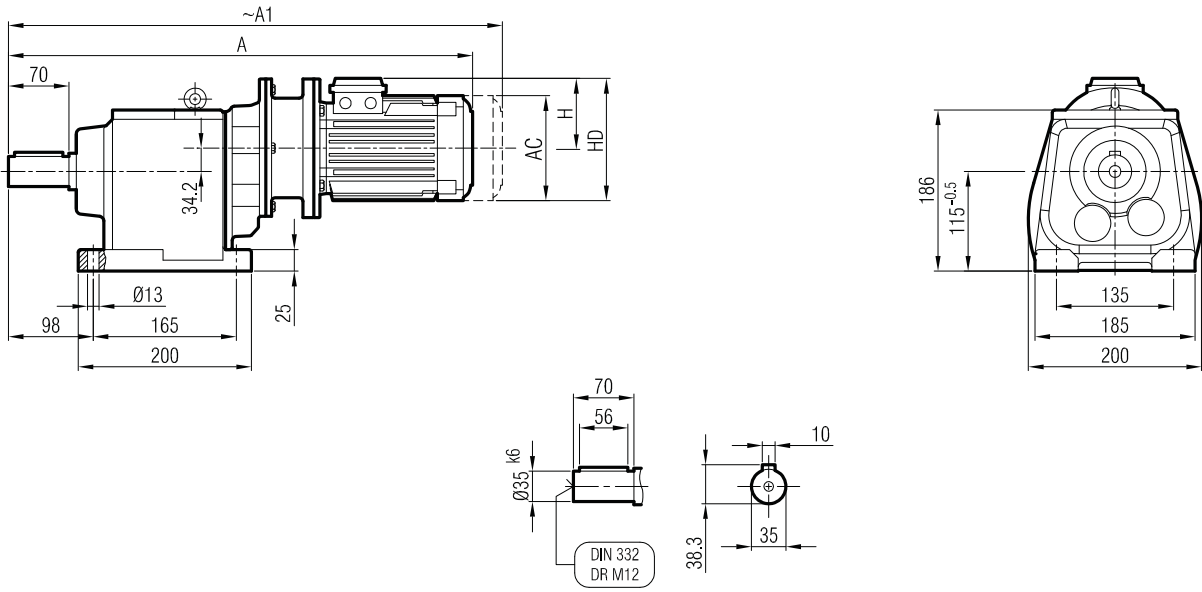
"A₁" Ölçüsü Frenli Motorlar içindir.
Dimension "A₁" is for motors with brake
Le dimensions "A₁" correspond aux moteurs
équipés de freins.

İRAF 64

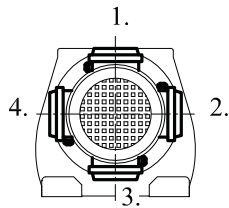




İRAPM 64



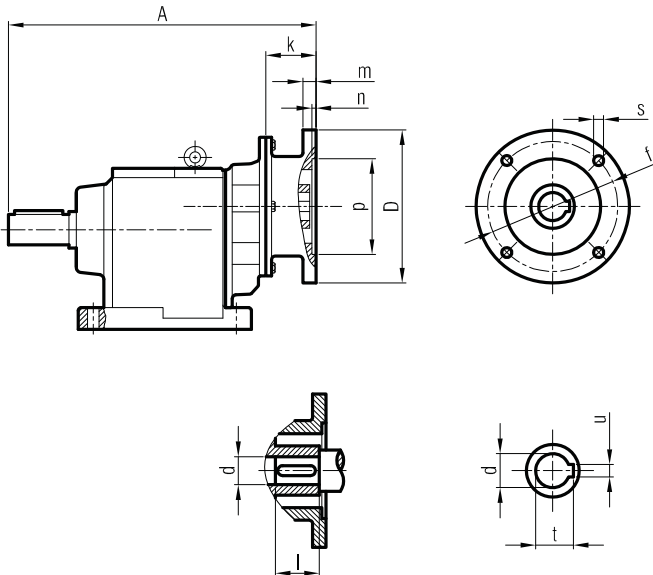
Klemens Pozisyonları
Terminal Box Positions
Klemmenkasten Positionen



	63/B5	71/B5	80/B5	90 S/B5	90 L/B5
A	538	572	595	611	636
A ₁	594	623	664	677	702
H	97	111	118	126	126
HD	160	182	198	216	216
AC	121	138	156	176	176

"A₁" Ölçüsü Frenli Motorlar içindir.
Dimension "A₁" is for motors with brake
Le dimensions "A₁" correspond aux moteurs équipés de freins.

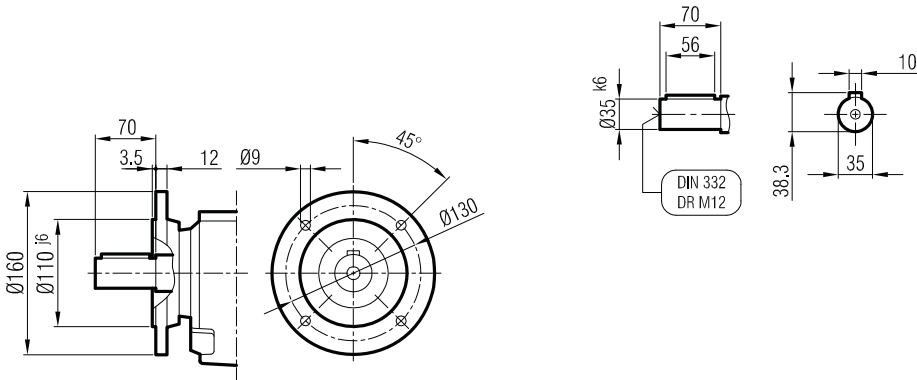
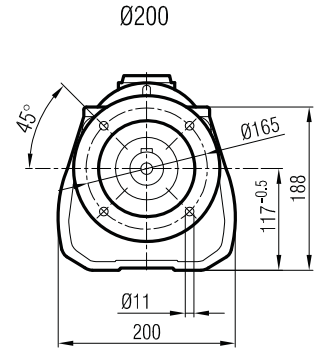
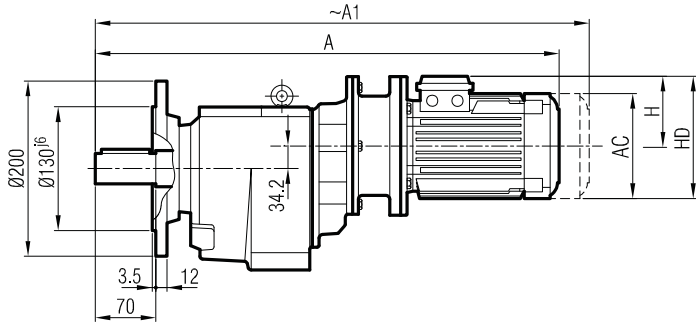
İRAP 64



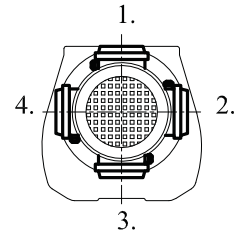
	A	Øp	Øf	ØD	s	k	m	n	Ød	l	t	u
63/B5	341	95	115	140	M8	35.5	8	4	11	23	12.8	4
71/B5	350	110	130	160	M8	44	9	4	14	30	16.3	5
80/B5	352	130	165	200	M10	46	12	5	19	40	21.8	6
90/B5	352	130	165	200	M10	46	12	5	24	50	27.3	8



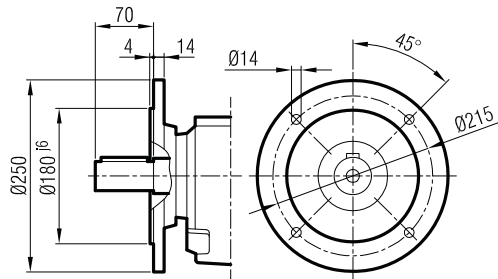
İRFPM 64



Klemens Pozisyonları
Terminal Box Positions
Klemmenkasten Positionen



Ø160
(Opsiyonel / Optional / Optional)

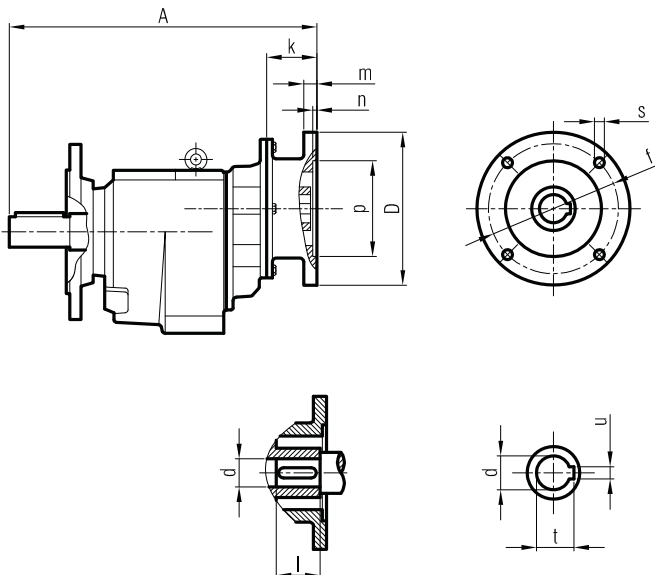


Ø250
(Opsiyonel / Optional / Optional)

	63/B5	71/B5	80/B5	90 S/B5	90 L/B5
A	538	572	595	611	636
A ₁	594	623	664	677	702
H	97	111	118	126	126
HD	160	182	198	216	216
AC	121	138	156	176	176

"A₁" Ölçüsü Frenli Motorlar içindir.
Dimension "A₁" is for motors with brake
Le dimensions "A₁" correspond aux moteurs équipés de freins.

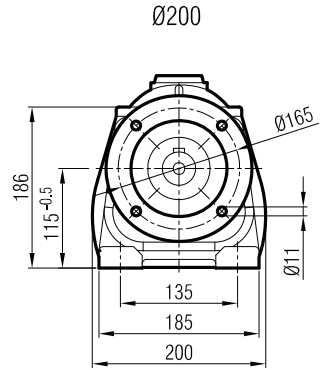
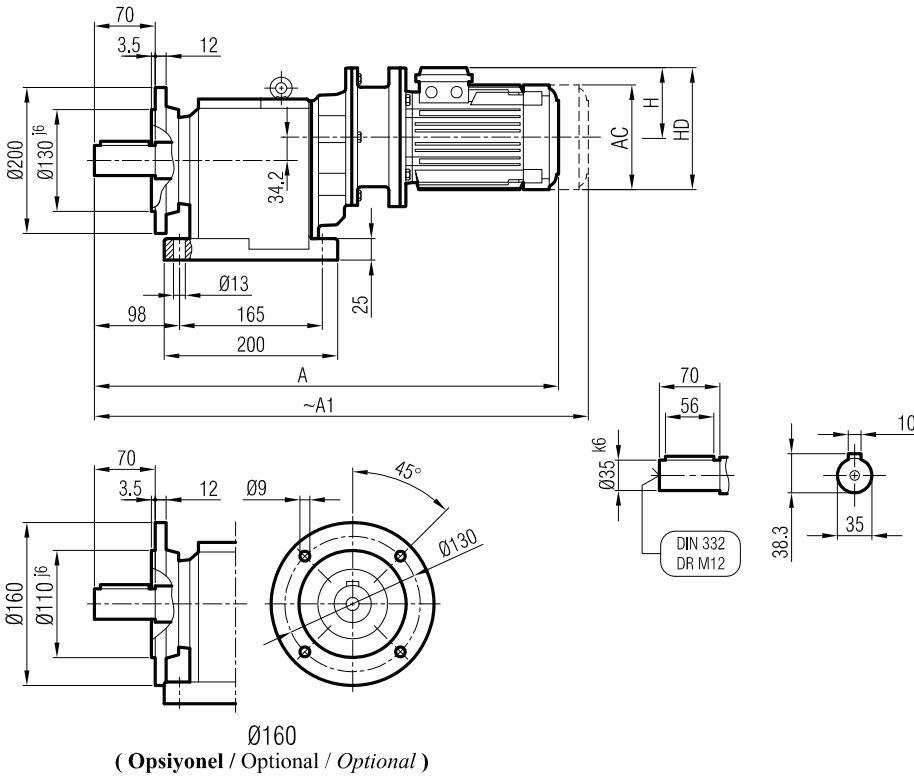
İRFP 64



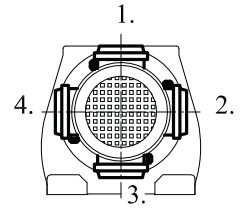
	A	Øp	Øf	ØD	s	k	m	n	Ød	l	t	u
63/B5	341	95	115	140	M8	35.5	8	4	11	23	12.8	4
71/B5	350	110	130	160	M8	44	9	4	14	30	16.3	5
80/B5	352	130	165	200	M10	46	12	5	19	40	21.8	6
90/B5	352	130	165	200	M10	46	12	5	24	50	27.3	8



İRAFPM 64



Klemens Pozisyonları
Terminal Box Positions
Klemmenkasten Positionen

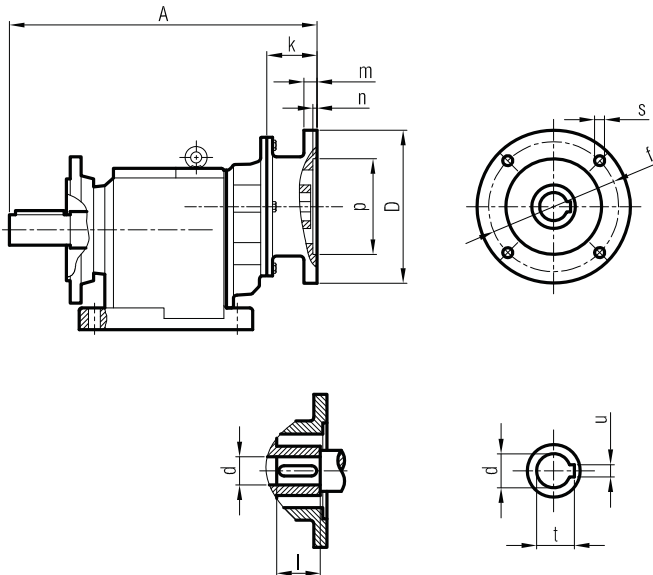


Ø160
(Opsiyonel / Optional / Optional)

	63/B5	71/B5	80/B5	90 S/B5	90 L/B5
A	538	572	595	611	636
A ₁	594	623	664	677	702
H	97	111	118	126	126
HD	160	182	198	216	216
AC	121	138	156	176	176

"A₁" Ölçüsü Frenli Motorlar içindir.
Dimension "A₁" is for motors with brake
Le dimensions "A₁" correspond aux moteurs
équipés de freins.

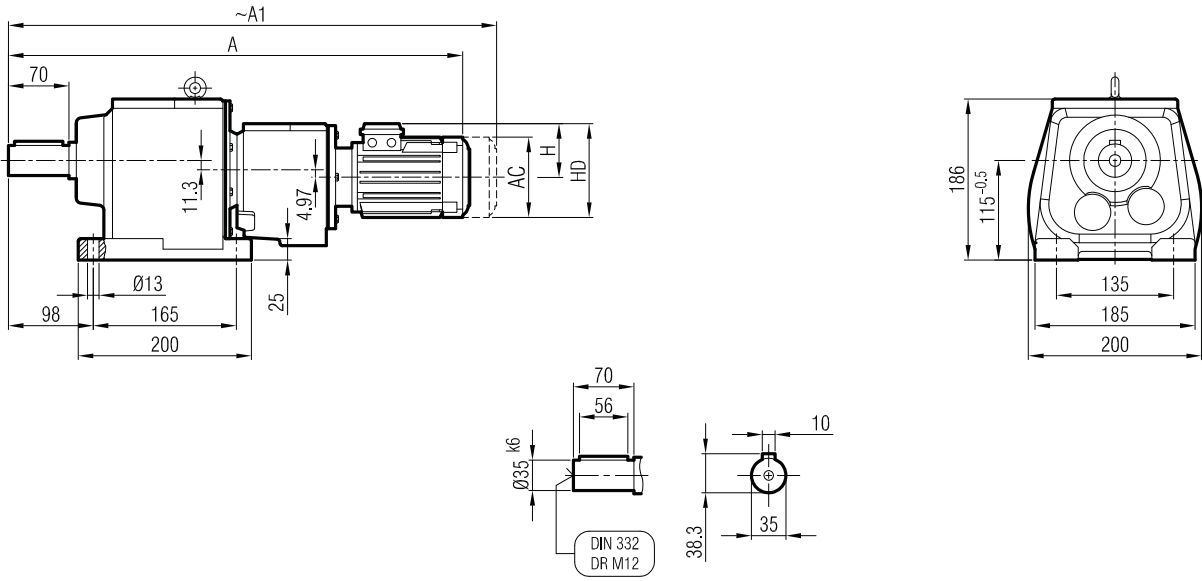
İRAFP 64



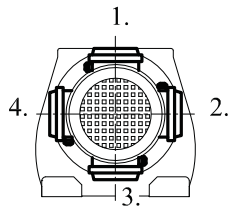
	A	Øp	Øf	ØD	s	k	m	n	Ød	l	t	u
63/B5	341	95	115	140	M8	35.5	8	4	11	23	12.8	4
71/B5	350	110	130	160	M8	44	9	4	14	30	16.3	5
80/B5	352	130	165	200	M10	46	12	5	19	40	21.8	6
90/B5	352	130	165	200	M10	46	12	5	24	50	27.3	8



İRAM 62 İR 52
İRAM 63 İR 52



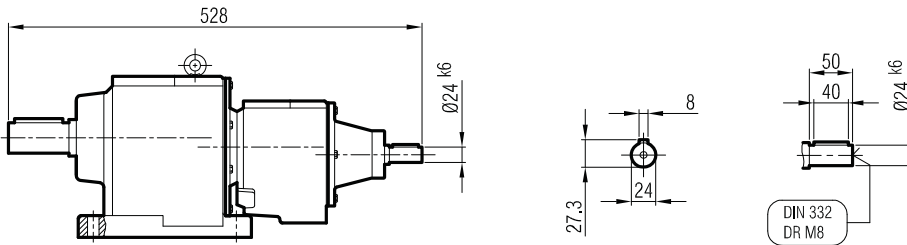
Klemens Pozisyonları
Terminal Box Positions
Klemmenkasten Positionen



	71				
A	616				
A ₁	667				
H	111				
HD	182				
AC	138				

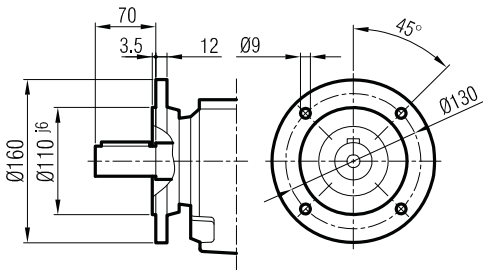
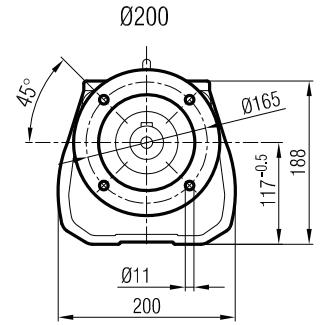
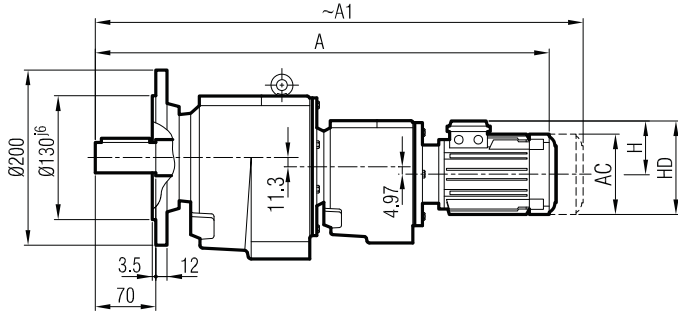
"A₁" Ölçüsü Frenli Motorlar içindir.
Dimension "A₁" is for motors with brake
Le dimensions "A₁" correspond aux moteurs
équipés de freins.

İRA 62 İR 52 / İRA 62 İR 53
İRA 63 İR 52 / İRA 63 İR 53

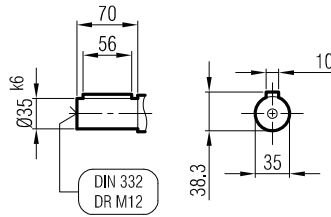




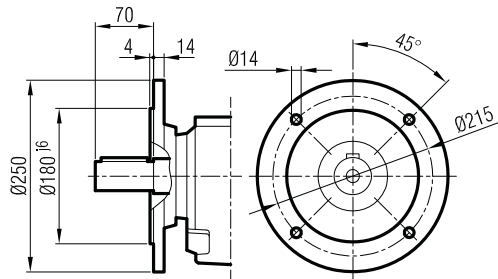
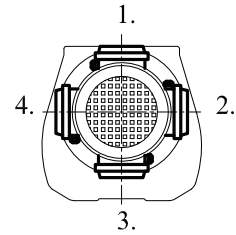
İRFM 62 İR 52
İRFM 63 İR 52



Ø160
(Opsiyonel / Optional / Optional)



Klemens Pozisyonları
Terminal Box Positions
Klemmenkasten Positionen

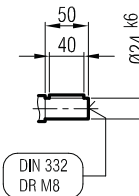
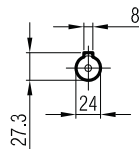
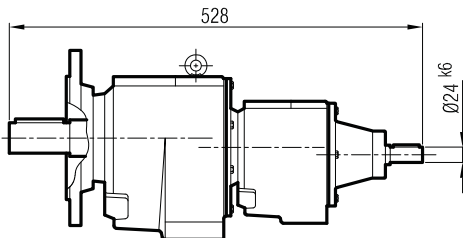


Ø250
(Opsiyonel / Optional / Optional)

	71				
A	616				
A1	667				
H	111				
HD	182				
AC	138				

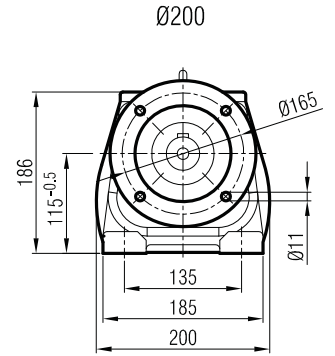
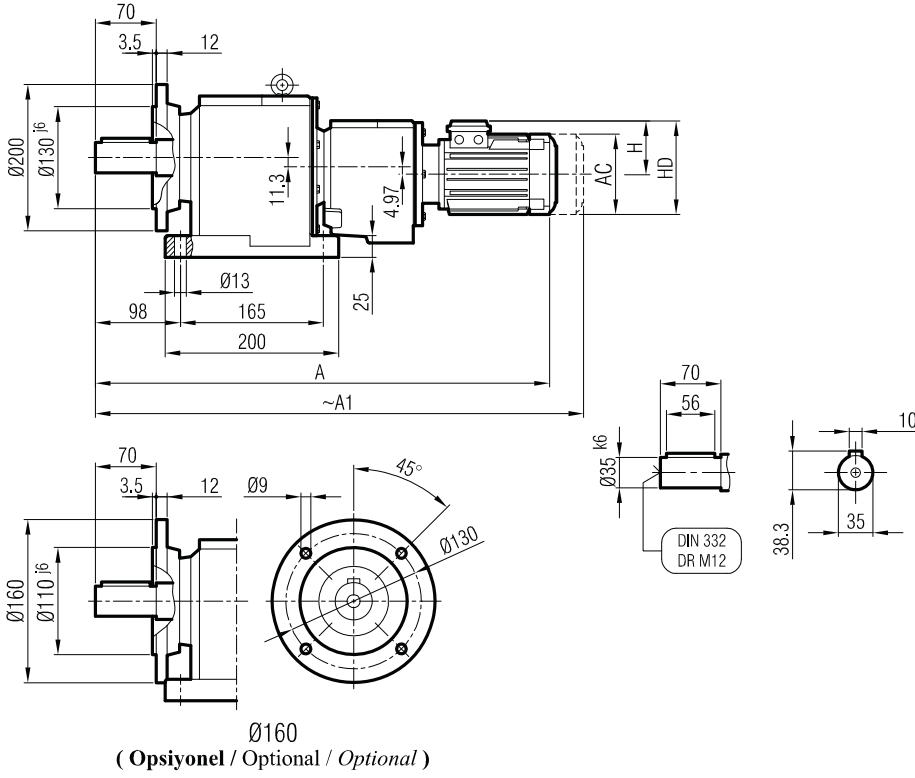
"A1" Ölçüsü Frenli Motorlar içindir.
Dimension "A1" is for motors with brake
Le dimensions "A1" correspondent aux moteurs
équipés de freins.

İRF 62 İR 52 / İRF 62 İR 53
İRF 63 İR 52 / İRF 63 İR 53

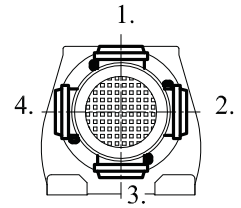




İRAFM 62 İR 52
İRAFM 63 İR 52



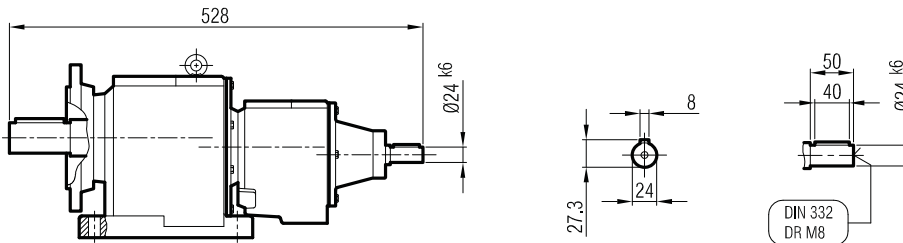
Klemens Pozisyonları
Terminal Box Positions
Klemmenkasten Positionen



	71				
A	616				
A ₁	667				
H	111				
HD	182				
AC	138				

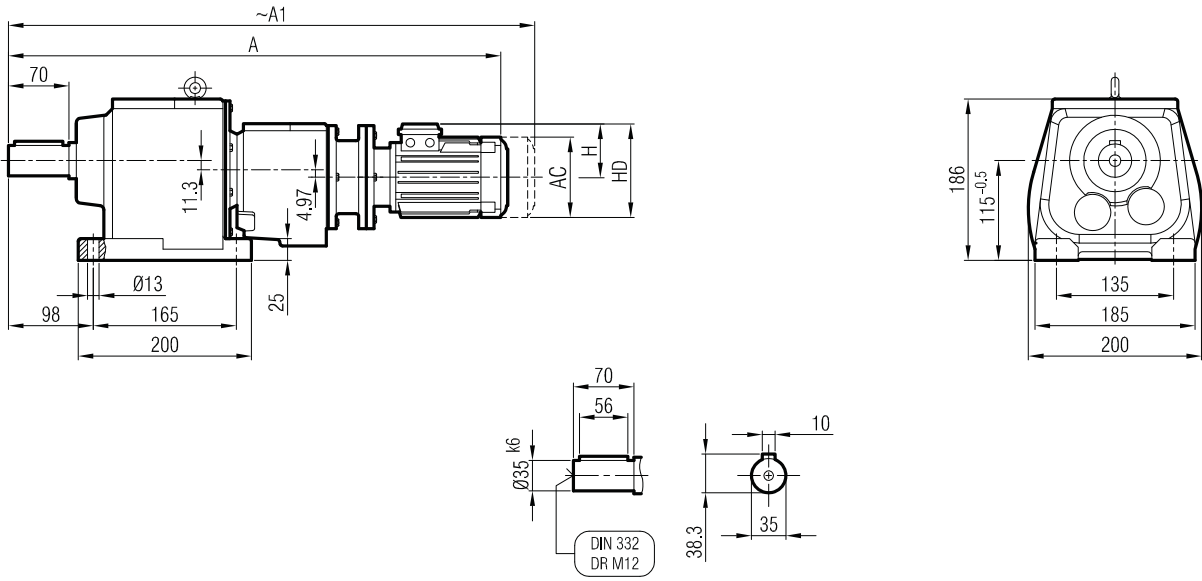
"A₁" Ölçüsü Frenli Motorlar içindir.
Dimension "A₁" is for motors with brake
Le dimensions "A₁" correspond aux moteurs
équipés de freins.

İRAF 62 İR 52 / İRAF 62 İR 53
İRAF 63 İR 52 / İRAF 63 İR 53

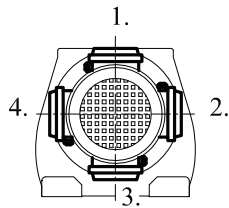




İRAPM 62 İR 52
İRAPM 63 İR 52



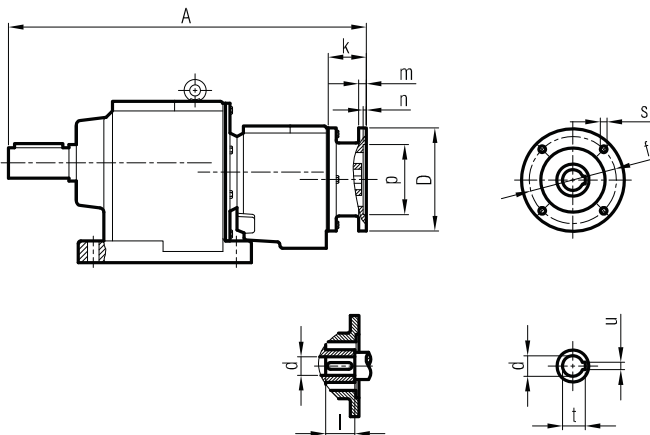
Klemens Pozisyonları
Terminal Box Positions
Klemmenkasten Positionen



	63/B5	71/B5			
A	631	665			
A ₁	687	716			
H	97	111			
HD	160	182			
AC	121	138			

"A₁" Ölçüsü Frenli Motorlar içindir.
Dimension "A₁" is for motors with brake
Le dimensions "A₁" correspondent aux moteurs équipés de freins.

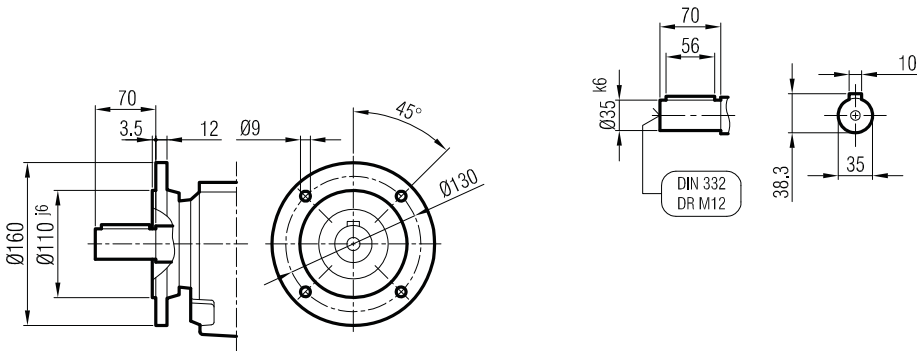
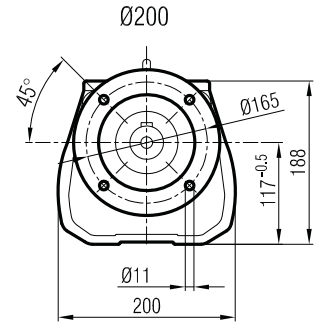
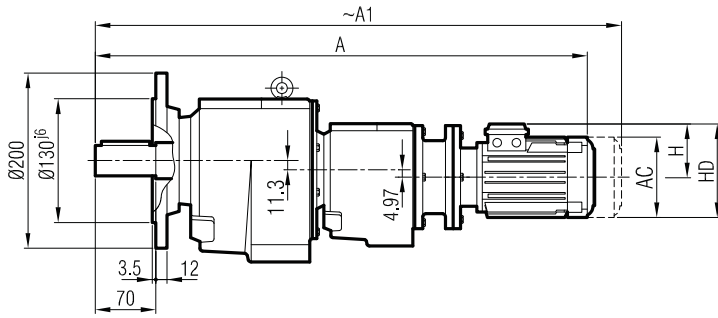
İRAP 62 İR 52 / İRAP 62 İR 53
İRAP 63 İR 52 / İRAP 63 İR 53



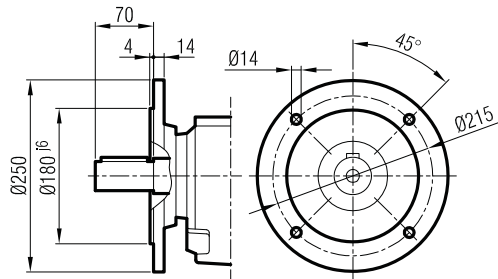
	A	Øp	Øf	ØD	s	k	m	n	Ød	l	t	u
63/B5	434	95	115	140	M8	35.5	8	4	11	23	12.8	4
71/B5	443	110	130	160	M8	44	9	4	14	30	16.3	5



İRFPM 62 İR 52
İRFPM 63 İR 52

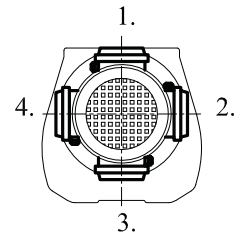


Ø160
(Opsiyonel / Optional / Optional)



Ø250
(Opsiyonel / Optional / Optional)

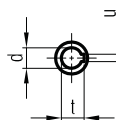
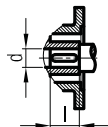
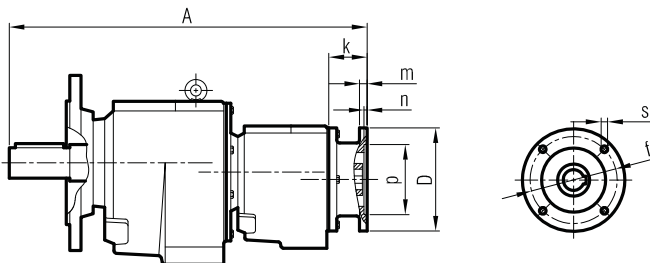
Klemens Pozisyonları
Terminal Box Positions
Klemmenkasten Positionen



	63/B5	71/B5			
A	631	665			
A ₁	687	716			
H	97	111			
HD	160	182			
AC	121	138			

"A₁" Ölçüsü Frenli Motorlar içindir.
Dimension "A₁" is for motors with brake
Le dimensions "A₁" correspondent aux moteurs
équipés de freins.

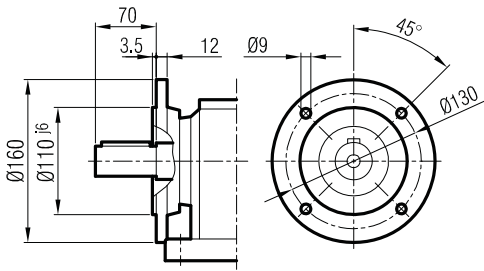
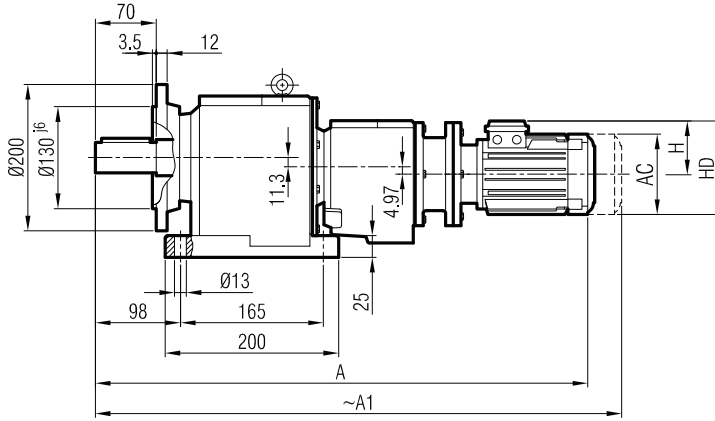
İRFP 62 İR 52 / İRFP 62 İR 53
İRFP 63 İR 52 / İRFP 63 İR 53



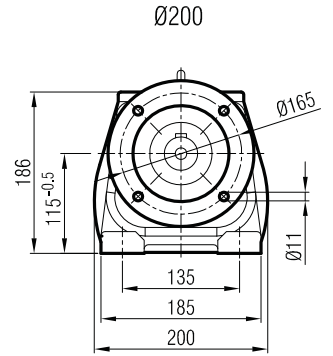
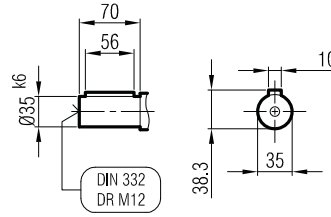
	A	Øp	Øf	ØD	s	k	m	n	Ød	l	t	u
63/B5	434	95	115	140	M8	35.5	8	4	11	23	12.8	4
71/B5	443	110	130	160	M8	44	9	4	14	30	16.3	5



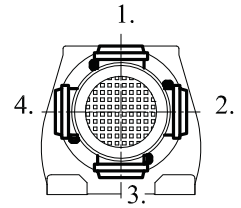
İRAFPM 62 İR 52
İRAFPM 63 İR 52



Ø160
(Opsiyonel / Optional / Optional)



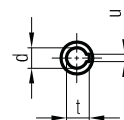
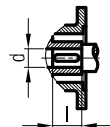
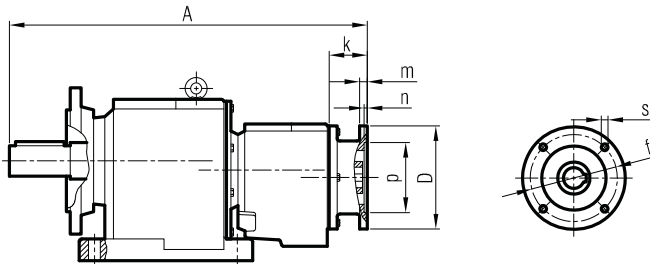
Klemens Pozisyonları
Terminal Box Positions
Klemmenkasten Positionen



	63/B5	71/B5			
A	631	665			
A ₁	687	716			
H	97	111			
HD	160	182			
AC	121	138			

"A₁" Ölçüsü Frenli Motorlar içindir.
Dimension "A₁" is for motors with brake
Le dimensions "A₁" correspondent aux moteurs équipés de freins.

İRAFP 62 İR 52 / İRAFP 62 İR 53
İRAFP 63 İR 52 / İRAFP 63 İR 53



	A	Øp	Øf	ØD	s	k	m	n	Ød	l	t	u
63/B5	434	95	115	140	M8	35.5	8	4	11	23	12.8	4
71/B5	443	110	130	160	M8	44	9	4	14	30	16.3	5