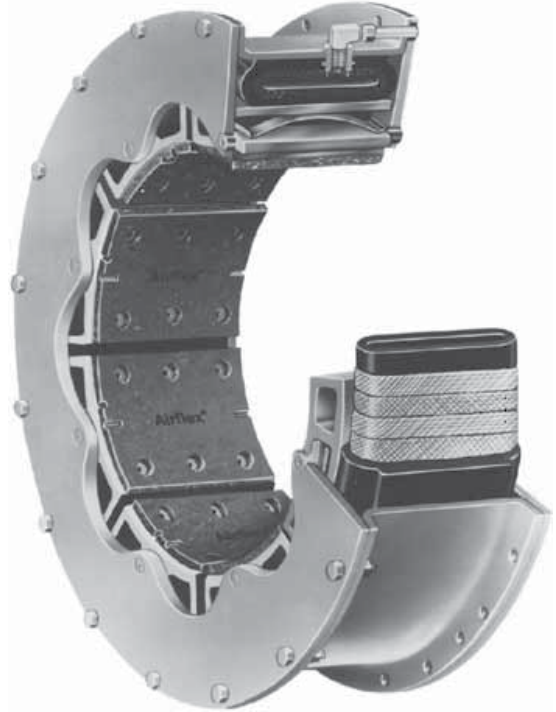


Airflex® VC Construction

Section B



The type VC element assembly is specifically designed and built for severe clutch or brake applications in which large inertia loads and sustained slippage would normally result in loss of torque and reduced operating life.

VC design and construction is different from the CB and CM elements in that the torque is transmitted by torque bars rather than the sidewalls of the actuating tube. The loose actuating tube is contained within a housing formed by a rim and two side plates, and is replaceable. The torque bars, which are held in position by the side plates, pass through cavities in the backing plates of the friction shoes. Pressurizing the actuating tube forces the friction shoes to engage around a cylindrical drum. Leaf springs in the torque bar cavities of the backing plates retract the friction shoes when the actuating tube pressure is released. Element torque capacity is dependent upon the applied pressure and rotating speed. Catalog ratings are given at 75 psi (5,2 bar) and zero rpm. Maximum recommended pressure is 125 psi (8,6 bar). Adjustment for pressure and speed is explained under Selection Procedure. VC elements are available in 24 sizes which are identified by

the drum diameter in inches on which they constrict and the width in inches of its friction lining. For a given drum diameter it is possible to have two different lining widths. For this reason, the elements are grouped by lining width into a narrow series and a wide series. As an example, the narrow series 20VC600 and the wide series 20VC1000 both constrict on a 20 inch diameter drum. But, the narrow unit has a lining width of 6 inches, and the wide unit has a lining width of 10 inches. The smallest VC element will constrict on a 11.5 inch (292 mm) diameter drum and the largest on a 76 inch (1930 mm) diameter drum.

Two elements of a narrow series can be bolted together to form a dual element having twice the torque capacity of a single element. With the exception of the 14VC1000 element, the wide series elements can also be dualled. The large drum hub diameter and small drum diameter restricts the radial space available for mechanically connecting the drums to the hub and makes dualing the 14VC1000 elements impractical.

The VC design offers the following features in addition to the constricting features described earlier in this section.

Airflex® VC Features

Section B

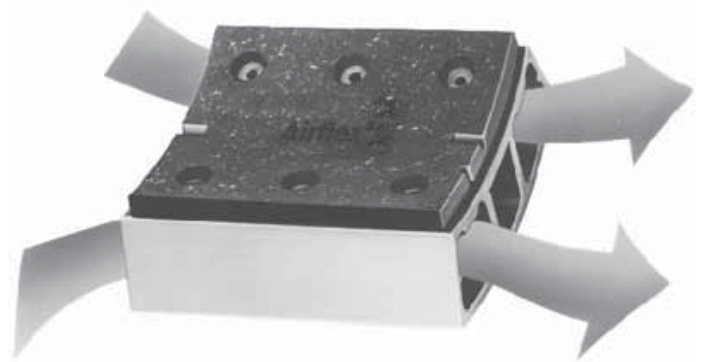
Ventilated Construction

Friction shoe backing plates have large air passages through their entire length. This construction coupled with scalloped side plates allows cooling air to flow through the element. In addition, the large exposed inside diameter assures the coolest possible operation. None of the heat is generated deep in the element's internal parts where it can be trapped. The open construction assures rapid heat dissipation.

Serviceability

The VC clutch can be dismantled on the shaft to gain access to its component parts. All parts are available as replacement parts.

A limited number of element sizes are available in a split configuration. They are used in applications having limited axial access for element maintenance. The following pages give additional descriptive information, selection procedures and common clutch and brake arrangements for the complete VC product line.



Where Used:

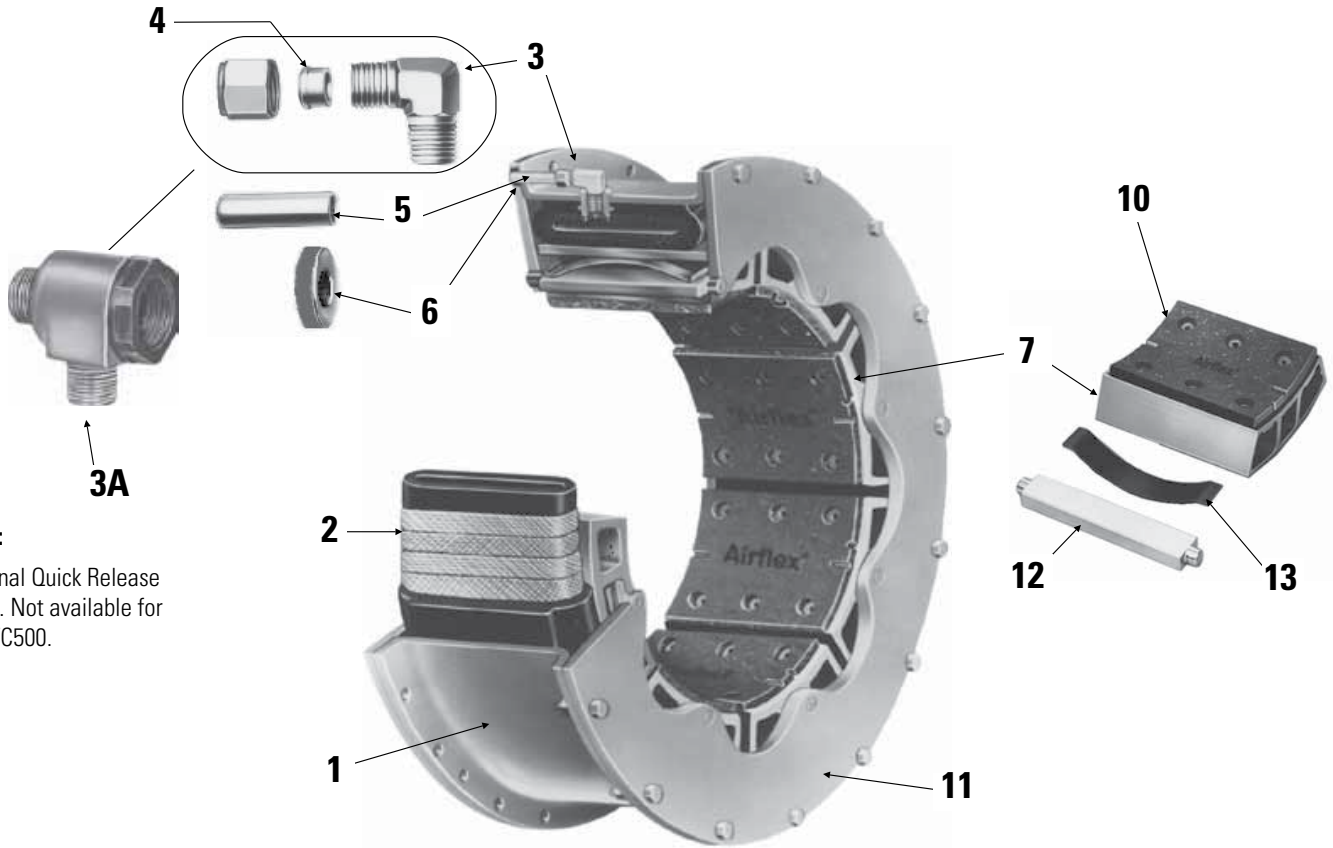
- Grinding Mills
- Marine Propulsion
- Metal Forming Machinery
- Oil Field Machinery

Narrow Sizes	Torque Rating	
	lb · in @ 75 psi	N · m @5, 2 bar
11.5VC500	27000	3050
14VC500	39200	4430
16VC600	65000	7350
20VC600	93000	10500
24VC650	135000	15300
28VC650	182000	20600
33VC650	255000	28800
37VC650	320000	36200
42VC650	380000	42900

Wide Sizes	Torque Rating	
	lb · in @ 75 psi	N · m @5, 2 bar
14VC1000	85000	9610
16VC1000	114000	12900
20VC1000	161000	18200
24VC1000	219000	24700
28VC1000	296000	33400
32VC1000	415000	46900
38VC1200	680000	76800
42VC1200	819000	92500
46VC1200	950000	107000
52VC1200	1215000	137000
51VC1600	1610000	182000
60VC1600	2183000	247000
66VC1600	2800000	316000
76VC1600	3660000	413057
76VC2000	Consult Factory	

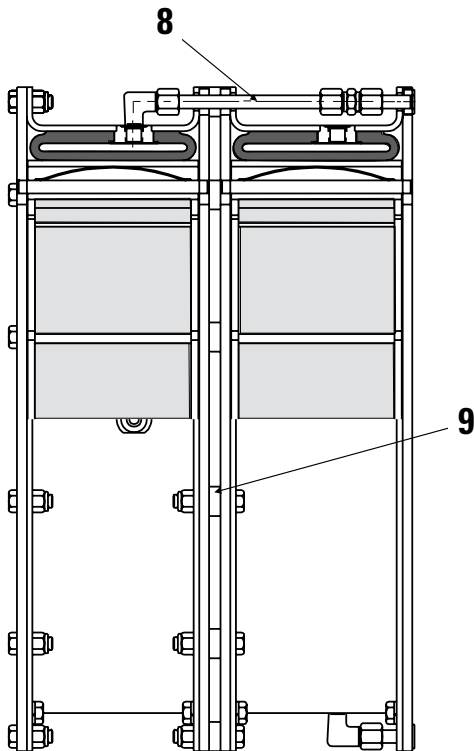
Airflex® VC Component Descriptions

Section B



Note:

Optional Quick Release Valve. Not available for 11.5VC500.

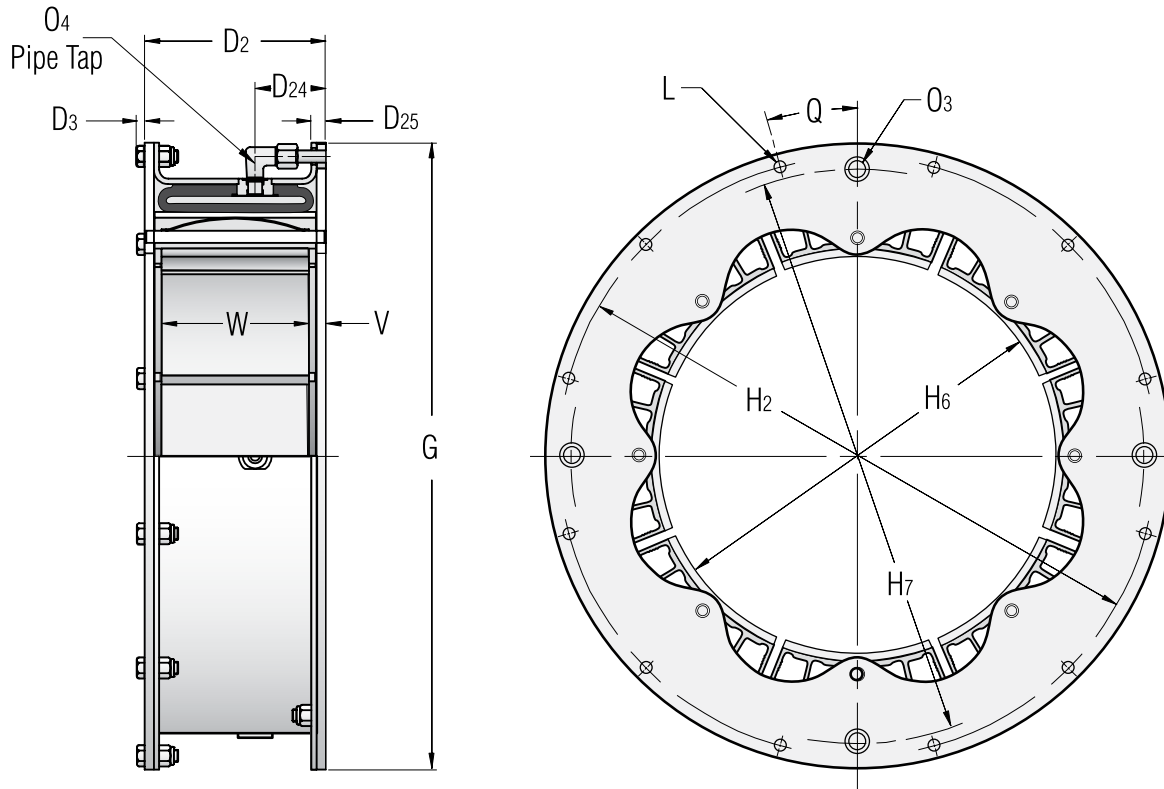


Item	Component Description
1	Rim
2	Tube (with valve stem snap rings where required)
3	Elbow Assembly
3A	Optional -Quick Release Valve Assembly
4	Compression Ring (included with items 3&3A)
5	Air Connection Tube
6	Air Connection Gasket
7	Friction Shoe Assembly
8	Air Tube Group (Dual Mounted)
9	Spacer Group (Dual Mounted)
10	Replacement Friction Lining & Fastener Kit
11	Side Plate (2 required)
12	Torque Bar
13	Release Spring
7, 12, & 13	Friction Shoe, Torque Bar & Spring Kit

Airflex® Single Narrow VC Elements

Form VC-501 Sizes 11.5 to 42

Section B



ENGLISH

Size	Mr Torque Part Number	Rating (lb-in @ 75 psi)	Maximum Speed (rpm)	C _s Centrifugal loss (psi/rpm ²)	Wk ² (lb-ft ²)	Weight (lb)	Friction Area (in ²)	Friction Lining Thickness (inches)	Worn	Air Tube Cavity (in ³)	Minimum Drum Diameter (inches)
11.5VC500	142639	27,000	1800	23 E-06	43	96	166	0.32	0.16	70	11.41
14VC500	143829	39,200	1500	28 E-06	78	128	205	0.32	0.16	95	13.91
16VC600	142640	65,000	1400	29 E-06	115	151	283	0.32	0.16	120	15.91
20VC600	142641	93,000	1200	40 E-06	193	179	380	0.32	0.16	140	19.88
24VC650	142642	135,000	1050	49 E-06	369	246	466	0.44	0.16	200	23.88
28VC650	142643	182,000	1000	58 E-06	537	280	548	0.44	0.16	270	27.81
33VC650	142644	255,000	900	74 E-06	1083	392	643	0.57	0.28	360	32.81
37VC650	142645	320,000	800	90 E-06	1400	433	720	0.57	0.28	400	36.81
42VC650	142647	380,000	800	95 E-06	1990	485	822	0.57	0.28	440	41.81

SI

Size	Part Number	Mr Torque Rating (N-m @ 5.2 bar)	Maximum Speed (rpm)	C _s Centrifugal loss (bar/rpm ²)	J (kg-m ²)	Mass (kg)	Friction Area (cm ²)	Friction Lining Thickness (mm)	New	Worn	Air Tube Cavity (dm ³)	Minimum Drum Diameter (mm)
11.5VC500	142639	3,050	1800	1,59 E-06	1,81	43	1071	8	4	1,15	290	
14VC500	143829	4,430	1500	1,93 E-06	3,28	58	1322	8	4	1,56	353	
16VC600	142640	7,340	1400	2,00 E-06	4,83	68	1825	8	4	1,97	404	
20VC600	142641	10,505	1200	2,76 E-06	8,11	81	2451	8	4	2,30	505	
24VC650	142642	15,250	1050	3,38 E-06	15,50	111	3006	11	4	3,28	607	
28VC650	142643	20,560	1000	4,00 E-06	22,55	127	3535	11	4	4,43	706	
33VC650	142644	28,810	900	5,11 E-06	45,49	178	4147	14	7	5,90	833	
37VC650	142645	36,155	800	6,21 E-06	58,80	196	4644	14	7	6,56	935	
42VC650	142647	42,930	800	6,56 E-06	83,58	220	5302	14	7	7,22	1062	

Airflex® Single Narrow VC Elements

Form VC-501 Sizes 11.5 to 42

Section B

ENGLISH

Size	(Dimensions in inches)				G	H ₂	H ₆	H ₇	L No.	L Dia.	O ₃	O ₄ No.	O ₄ Size	Q (Deg)	V	W No.	W Width
	D ₂	D ₃	D ₂₄	D ₂₅													
11.5VC500	6.13	0.23	2.38	0.38	19.625	18.875	11.63	18.88	16	0.375	0.31	2	¾-18 NPT	11.25	0.56	8	5.00
14VC500	6.13	0.31	2.88	0.58	23.500	22.500	14.22	22.25	8	0.500	0.38	4	¾-18 NPT	22.50	0.56	8	5.00
16VC600	7.38	0.31	2.88	0.59	25.500	24.375	16.22	24.38	12	0.500	0.38	4	¾-18 NPT	15.00	0.69	8	6.00
20VC600	7.38	0.31	2.88	0.59	29.500	28.375	20.22	28.38	12	0.500	0.38	4	¾-18 NPT	15.00	0.69	10	6.00
24VC650	7.69	0.39	2.88	0.63	34.000	32.750	24.22	32.50	16	0.625	0.50	4	½-14 NPT	11.25	0.59	12	6.50
28VC650	7.69	0.39	2.88	0.63	38.000	36.750	28.22	36.50	16	0.625	0.50	4	½-14 NPT	11.25	0.59	14	6.50
33VC650	7.69	0.47	3.13	0.63	44.625	43.125	33.22	43.25	18	0.750	0.63	4	¾-14 NPT	15.00	0.59	16	6.50
37VC650	7.69	0.47	3.13	0.69	48.625	47.125	37.22	47.25	20	0.750	0.63	4	¾-14 NPT	9.00	0.59	18	6.50
42VC650	7.69	0.47	3.13	0.66	53.625	52.125	42.22	52.25	24	0.750	0.63	4	¾-14 NPT	7.50	0.59	20	6.50

SI

Size	(Dimensions in millimeters)				G	H ₂	H ₆	H ₇	L No.	L Dia.	O ₃	O ₄ No.	O ₄ Size	Q (Deg)	V	W No.	W Width
	D ₂	D ₃	D ₂₄	D ₂₅													
11.5VC500	156	6	60	10	498,5	479,4	295	479	16	9,5	8	2	¾-18 NPT	11,25	14	8	127
15VC500	156	8	73	15	596,9	571,5	361	565	8	12,7	10	4	¾-18 NPT	22,50	14	8	127
16VC600	187	8	73	15	647,7	619,1	412	619	12	12,7	10	4	¾-18 NPT	15,00	17	8	152
20VC600	187	8	73	15	749,3	720,7	514	721	12	12,7	10	4	¾-18 NPT	15,00	17	10	152
24VC650	195	10	73	16	863,6	831,9	615	826	16	15,9	13	4	½-14 NPT	11,25	15	12	165
28VC650	195	10	73	16	965,2	933,5	717	927	16	15,9	13	4	½-14 NPT	11,25	15	14	165
33VC650	195	12	79	16	1133,5	1095,4	844	1099	18	19,1	16	4	¾-14 NPT	15,00	15	16	165
37VC650	195	12	79	17	1235,1	1197,0	945	1200	20	19,1	16	4	¾-14 NPT	9,00	15	18	165
42VC650	195	12	79	17	1362,1	1324,0	1072	1327	24	19,1	16	4	¾-14 NPT	7,50	15	20	165

Notes

Part Number refers to basic part number only. When ordering, the number of air inlets and type of connection must be specified.

M_r — Dynamic torque shown, static torque approximately 25% greater. Torque in each application is dependent upon air pressure and speed.

Tolerance for sizes (G):

11.5 thru 20
+0.000/-0.005 in
(+0,00/-0,13 mm)

24 thru 28
+0.000/-0.008 in
(+0,00/-0,20 mm)

33 thru 42
+0.000/-0.010 in

(+0,00/-0,25 mm)

(L) Tolerance:

+0.005/-0.000 in
(+0,13/-0,00 mm)

(O₄) — Sizes 11.5 available with one or two inlets. All other sizes have four inlets.

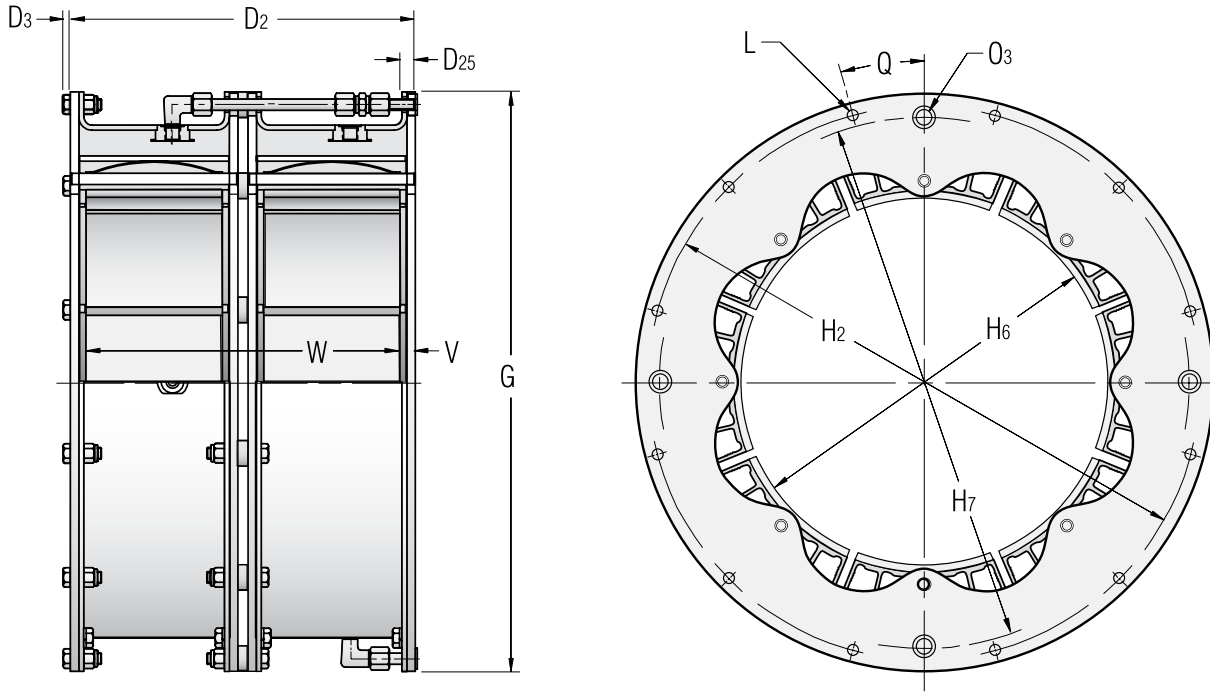
(Maximum Speed) — Maximum rpm is dependent upon operating conditions and varies for each application. Consult factory for applications exceeding these speeds.

(Air Tube Cavity) — Drum contact with worn shoes.

Airflex® Dual Narrow VC Elements

Form VC-502 Sizes 11.5 to 42

Section B



ENGLISH

Size	Part Number	M _t Torque Rating lb-in@ 75 psi	Max. Speed (rpm)	C _s Centrifugal Loss (psi/rpm ²)	Wk ² (lb-ft ²)	Weight (lb)	Friction Area (in ²)	Friction New	Lining Thickness (ins) Worn	Air Tube Cavity (in ³)	Minimum Drum Diameter (ins)
11.5VC500	142112	5,4000	1800	23 E-06	86	197	332	0.32	0.16	140	11.41
14VC500	142114	78,400	1500	28 E-06	156	258	410	0.32	0.16	190	13.91
16VC600	142115	130,000	1400	29 E-06	230	307	566	0.32	0.16	240	15.91
20VC600	142116	186,000	1200	40 E-06	386	363	760	0.32	0.16	280	19.88
24VC650	142117	270,000	1050	49 E-06	738	497	932	0.44	0.16	400	23.88
28VC650	142118	364,000	1000	58 E-06	1074	565	1096	0.44	0.16	540	27.81
33VC650	142119	510,000	900	74 E-06	2166	784	1286	0.57	0.28	720	32.81
37VC650	142120	640,000	800	90 E-06	2800	871	1440	0.57	0.28	800	36.81
42VC650	142121	760,000	800	95 E-06	3980	980	1644	0.57	0.28	880	41.81

Size	Part Number	M _t Torque Rating N-m@ 5,2 bar	Max. Speed (rpm)	C _s Centrifugal Loss (bar/rpm ²)	J (kg-m ²)	Mass (kg)	Friction Area (cm ²)	Friction New	Lining Thickness (mm) Worn	Air Tube Cavity (dm ³)	Minimum Drum Diameter (mm)
11.5VC500	142112	6,100	1800	1,59 E-06	3,61	89	2141	8	4	2,30	290
14VC500	142114	8,860	1500	1,93 E-06	6,55	117	2645	8	4	3,12	353
16VC600	142115	14,690	1400	2,00 E-06	9,66	139	3651	8	4	3,94	404
20VC600	142116	21,010	1200	2,76 E-06	16,21	164	4902	8	4	4,59	505
24VC650	142117	30,500	1050	3,38 E-06	31,00	225	6011	11	4	6,56	607
28VC650	142118	41,125	1000	4,00 E-06	45,11	256	7069	11	4	8,86	706
33VC650	142119	57,620	900	5,11 E-06	90,97	355	8295	14	7	11,8	833
37VC650	142120	72,310	800	6,21 E-06	117,6	395	9288	14	7	13,1	935
42VC650	142121	85,870	800	6,56 E-06	167,2	444	10604	14	7	14,4	1062

Airflex® Dual Narrow VC Elements

Form VC-502 Sizes 11.5 to 42

Section B

ENGLISH

Size	(Dimensions in inches)							L No.	L Dia	O ₃ No.	O ₃ Size	Q (Deg)	V	W No.	W Width
	D ₂	D ₃	D ₂₅	G	H ₂	H ₆	H ₇								
11.5VC500	12.75	0.23	0.56	19.625	18.875	11.63	18.88	16	0.375	2	0.31	11.25	0.56	16	11.63
14VC500	12.69	0.31	0.56	23.500	22.500	14.22	22.25	8	0.500	4	0.38	22.50	0.56	16	11.57
16VC600	15.19	0.31	0.56	25.500	24.375	16.22	24.38	12	0.500	4	0.38	15.00	0.69	16	13.81
20VC600	15.19	0.31	0.56	29.500	28.375	20.22	28.38	12	0.500	4	0.38	15.00	0.69	20	13.81
24VC650	15.94	0.39	0.63	34.000	32.750	24.22	32.50	16	0.625	4	0.50	11.25	0.59	24	14.75
28VC650	15.94	0.39	0.63	38.000	36.750	28.22	36.50	16	0.625	4	0.50	11.25	0.59	28	14.75
33VC650	15.94	0.47	0.69	44.625	43.125	33.22	43.25	18	0.750	4	0.63	15.00	0.59	32	14.75
37VC650	15.94	0.47	0.69	48.625	47.125	37.22	47.25	20	0.750	4	0.63	9.00	0.59	36	14.75
42VC650	15.94	0.47	0.69	53.625	52.125	42.22	52.25	24	0.750	4	0.63	7.50	0.59	40	14.75

SI

Size	(Dimensions in millimeters)							L No.	L Dia	O ₃ No.	O ₃ Size	Q (Deg)	V	W No.	W Width
	D ₂	D ₃	D ₂₅	G	H ₂	H ₆	H ₇								
11.5VC500	324	6	14	498,5	479,4	295	479	16	9,5	2	8	11,25	14	16	295
14VC500	322	8	14	596,9	571,5	361	565	8	12,7	4	10	22,50	14	16	294
16VC600	386	8	14	647,7	619,1	412	619	12	12,7	4	10	15,00	17	16	351
20VC600	386	8	14	749,3	720,7	514	721	12	12,7	4	10	15,00	17	20	351
24VC650	405	10	16	863,6	831,9	615	826	16	15,9	4	13	11,25	15	24	375
28VC650	405	10	16	965,2	933,5	717	927	16	15,9	4	13	11,25	15	28	375
33VC650	405	12	18	1133,5	1095,4	844	1099	18	19,1	4	16	15,00	15	32	375
37VC650	405	12	18	1235,1	1197,0	945	1200	20	19,1	4	16	9,00	15	36	375
42VC650	405	12	18	1362,1	1324,0	1072	1327	24	19,1	4	16	7,50	15	40	375

Notes:

Part Number refers to basic part number only. When ordering, the number of air inlets and type of connection must be specified.

M_r — Dynamic torque shown, static torque approximately 25% greater. Torque in each application is dependent upon air pressure and speed.

Tolerance for sizes (G):

11.5 thru 20
+0.000/-0.005 in
(+0,00/-0,13 mm)

24 thru 28
+0.000/-0.008 in
(+0,00/-0,20 mm)

33 thru 42
+0.000/-0.010 in
(+0,00/-0,25 mm)

(L) Tolerance:
+0.005/-0.000 in
(+0,13/-0,00 mm)

(O₄) — Sizes 11.5 available with one or two inlets. All other sizes have four inlets.

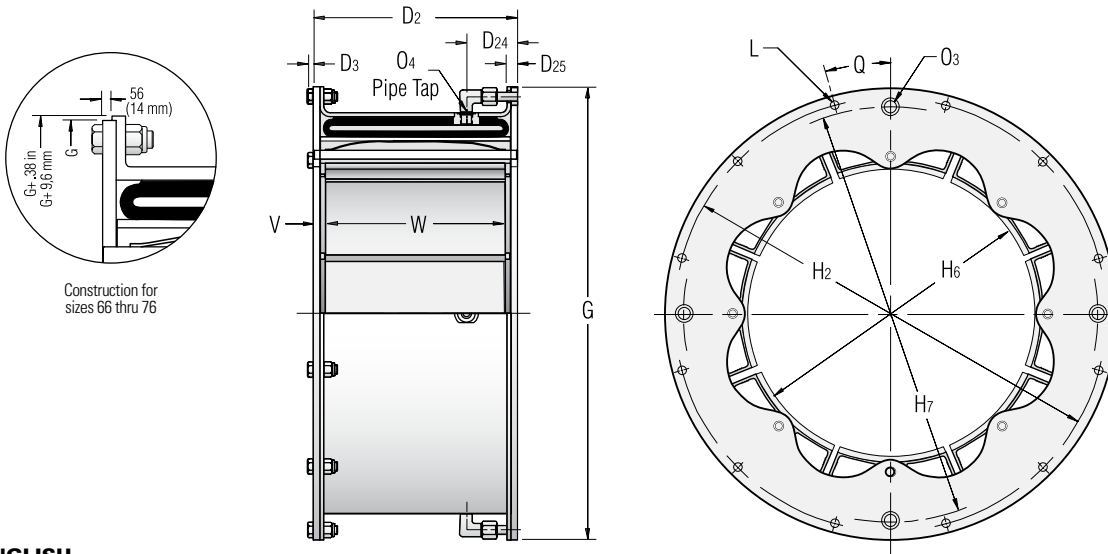
(Maximum Speed) — Maximum rpm is dependent upon operating conditions and varies for each application. Consult factory for applications exceeding these speeds.

(Air Tube Cavity) — Drum contact with worn shoes.

Airflex® Single Wide VC Elements

Form VC-503 Sizes 14 to 76

Section B



ENGLISH

Size	Part Number	M _t Torque Rating lb-in@ 75 psi	Max. Speed (rpm)	C _s Centrifugal Loss (psi/rpm ²)	Wk ² (lb-ft ²)	Weight (lb)	Friction Area (in ²)	Friction New	Lining Thickness (ins) Worn	Air Tube Cavity (in ³)	Minimum Drum Diameter (ins)
14VC1000	142838	85,000	1800	22 E-06	127	213	350	0.32	0.16	185	13.91
16VC1000	142821	114,000	1400	27 E-06	212	240	470	0.32	0.16	255	15.91
20VC1000	142832	161,000	1300	37 E-06	309	282	635	0.32	0.16	310	19.87
24VC1000	142675	219,000	1250	46 E-06	552	378	720	0.44	0.16	465	23.87
28VC1000	142674	296,000	1100	55 E-06	826	431	840	0.44	0.16	530	27.81
32VC1000	142673	415,000	1050	63 E-06	1570	624	960	0.57	0.38	600	31.81
38VC1200	142739	680,000	740	82 E-06	2330	684	1360	0.57	0.38	755	37.81
42VC1200	142677	819,000	670	86 E-06	3670	895	1500	0.57	0.38	850	41.75
46VC1200	142671	950,000	600	108 E-06	4830	980	1410	0.68	0.38	1205	45.75
52VC1200	142841	1,215,000	550	127 E-06	7285	1310	1590	0.68	0.38	1510	51.75
51VC1600	142835	1,610,000	550	125 E-06	10580	1830	2380	0.66	0.30	2000	50.75
60VC1600	142915	2,183,000	520	145 E-06	20532	2374	2800	0.66	0.30	2350	59.75
66VC1600	142097	2,800,000	480	185 E-06	24850	2630	3080	0.66	0.30	1950	65.75
76VC1600	—	—	—	Consult Factory	—	—	—	—	—	—	—

Size	Part Number	M _t Torque Rating N-m@ 5,2 bar	Max. Speed (rpm)	C _s Centrifugal Loss (bar/rpm ²)	J (kg-m ²)	Mass (kg)	Friction Area (cm ²)	Friction New	Lining Thickness (mm) Worn	Air Tube Cavity (dim ³)	Minimum Drum Diameter (mm)
14VC1000	142838	9,605	1800	1,52 E-06	5,33	96	2258	8	4	3,03	353
16VC1000	142821	12,880	1400	1,86 E-06	8,90	109	3032	8	4	4,18	404
20VC1000	142832	18,190	1300	2,55 E-06	12,98	128	4096	8	4	5,08	505
24VC1000	142675	24,745	1250	3,17 E-06	23,18	171	4644	11	4	7,63	606
28VC1000	142674	33,445	1100	3,80 E-06	34,69	195	5418	11	4	8,69	706
32VC1000	142673	46,890	1050	4,35 E-06	65,94	283	6192	14	10	9,84	808
38VC1200	142739	76,830	740	5,66 E-06	97,86	310	8772	14	10	12,4	960
42VC1200	142677	92,535	670	5,93 E-06	154,1	405	9675	14	10	13,9	1060
46VC1200	142671	107,335	600	7,45 E-06	202,9	444	9097	17	10	19,8	1162
52VC1200	142841	137,275	550	8,76 E-06	306,0	594	10256	17	10	24,8	1314
51VC1600	142835	181,905	550	8,63 E-06	444,4	830	15351	17	8	32,8	1289
60VC1600	142915	246,645	520	10,01 E-06	852,3	1077	18060	17	8	38,5	1518
66VC1600	142097	316,355	480	12,83 E-06	1044	1191	19866	17	8	32,1	1670
76VC1600	—	—	—	Consult Factory	—	—	—	—	—	—	—

Airflex® Single Wide VC Elements

Form VC-503 Sizes 14 to 76

Section B

ENGLISH

Size	(Dimensions in inches)				G	H ₂	H ₆	H ₇	L No.	L Dia.	O ₃	O ₄ No.	O ₄ Size	Q (Deg)	V	W No.	W Width
	D ₂	D ₃	D ₂₄	D ₂₅													
14VC1000	11.56	0.31	2.88	0.63	23.500	22.500	14.22	22.25	8	0.500	0.38	4	3/8-18 NPT	22.50	0.78	8	10
16VC1000	11.56	0.31	2.88	0.63	25.500	24.375	16.22	24.38	12	0.500	0.38	4	3/8-18 NPT	15.00	0.78	8	10
20VC1000	11.56	0.31	2.88	0.63	29.500	28.375	20.22	28.38	12	0.500	0.38	4	3/8-18 NPT	15.00	0.78	8	10
24VC1000	11.56	0.39	2.88	0.63	34.000	32.750	24.22	32.50	16	0.625	0.50	4	1/2-14 NPT	11.25	0.78	10	10
28VC1000	11.56	0.39	2.88	0.63	38.000	36.750	28.22	36.50	16	0.625	0.50	4	1/2-14 NPT	11.25	0.78	10	10
32VC1000	11.63	0.39	2.88	0.63	43.875	42.625	32.22	42.13	24	0.625	0.50	4	1/2-14 NPT	7.50	0.81	12	10
38VC1200	13.75	0.47	3.13	0.69	49.375	47.875	38.22	48.00	20	0.750	0.63	4	3/4-14 NPT	9.00	0.88	12	12
42VC1200	13.75	0.47	3.13	0.66	53.625	52.125	42.22	52.25	24	0.750	0.63	4	3/4-14 NPT	7.50	0.88	14	12
46VC1200	13.75	0.55	4.88	0.78	60.250	58.500	46.25	57.50	24	0.875	0.63	4	3/4-14 NPT	7.50	0.88	16	12
52VC1200	14.25	0.55	7.13	1.13	67.000	65.500	52.25	65.00	32	0.875	0.88	4	1-11 1/2 NPT	5.63	1.13	18	12
51VC1600	18.25	0.55	9.13	1.13	67.000	65.500	51.25	65.00	32	0.875	0.88	4	1-11 1/2 NPT	5.63	1.13	18	16
60VC1600	18.50	0.61	9.25	1.38	77.000	75.000	60.43	74.25	36	1.000	0.88	4	1-11 1/2 NPT	5.00	1.25	20	16
66VC1600	18.50	0.78	9.25	1.38	82.123	79.625	66.22	78.38	40	1.312	0.88	4	1-11 1/2 NPT	5.00	1.25	22	16

SI

Size	(Dimensions in millimeters)				G	H ₂	H ₆	H ₇	L No.	L Dia.	O ₃	O ₄ No.	O ₄ Size	Q (Deg)	V	W No.	W Width
	D ₂	D ₃	D ₂₄	D ₂₅													
14VC1000	294	8	73	16	596,9	571,5	361	565	8	12,7	10	4	3/8-18 NPT	22,50	20	8	254
16VC1000	294	8	73	16	647,7	619,1	412	619	12	12,7	10	4	3/8-18 NPT	15,00	20	8	254
20VC1000	294	8	73	16	749,3	720,7	514	721	12	12,7	10	4	3/8-18 NPT	15,00	20	8	254
24VC1000	294	10	73	16	863,6	831,9	615	826	16	15,9	13	4	1/2-14 NPT	11,25	20	10	254
28VC1000	294	10	73	16	965,2	933,5	717	927	16	15,9	13	4	1/2-14 NPT	11,25	20	10	254
32VC1000	295	10	73	16	1114,4	1082,7	818	1070	24	15,9	13	4	1/2-14 NPT	7,50	21	12	254
38VC1200	349	12	79	18	1254,1	1216,0	971	1219	20	19,1	16	4	3/4-14 NPT	9,00	22	12	305
42VC1200	349	12	79	17	1362,1	1324,0	1072	1327	24	19,1	16	4	3/4-14 NPT	7,50	22	14	305
46VC1200	349	14	124	20	1530,4	1485,9	1175	1461	24	22,2	16	4	3/4-14 NPT	7,50	22	16	305
52VC1200	362	14	181	29	1701,8	1663,7	1327	1651	32	22,2	22	4	1-11 1/2 NPT	5,63	29	18	305
51VC1600	464	14	232	29	1701,8	1663,7	1302	1651	32	22,2	22	4	1-11 1/2 NPT	5,63	29	18	406
60VC1600	470	15	235	35	1955,8	1905,0	1535	1886	36	25,4	22	4	1-11 1/2 NPT	5,00	32	20	406
66VC1600	470	20	235	35	2085,9	2022,5	1682	1991	40	33,3	22	4	1-11 1/2 NPT	5,00	32	22	406

Notes:

Part Number refers to basic part number only. When ordering, the number of air inlets and type of connection must be specified.

M_r — Dynamic torque shown, static torque approximately 25% greater. Torque in each application is dependent upon air pressure and speed.

Tolerance for sizes (G):

14 thru 20
+0.000/-0.005 in

(+0,00/-0,13 mm)
24 thru 28
+0.000/-0.008 in
(+0,00/-0,20 mm)
32 thru 60
+0.000/-0.010 in
(+0,00/-0,25 mm)
66 thru 76
+0.000/-0.005 in
(+0,00/-0,13 mm)
(L) Tolerance:

+0.005/-0.000 in
(+0,13/-0,00 mm)

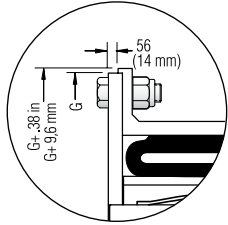
(Maximum Speed) — Maximum rpm is dependent upon operating conditions and varies for each application. Consult factory for applications exceeding these speeds.

(Air Tube Cavity) — Drum contact with worn shoes.

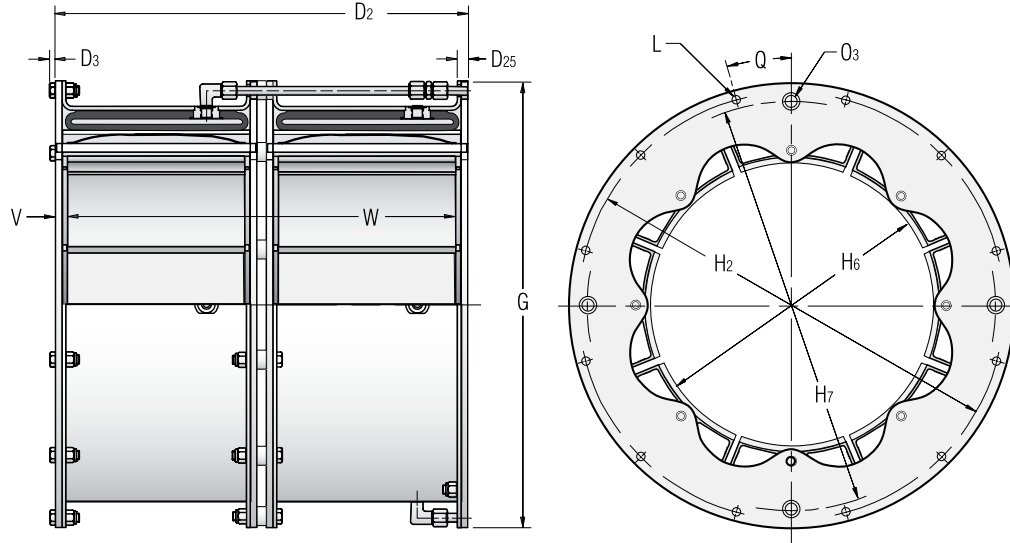
Airflex® Dual Wide VC Elements

Form VC-504 Sizes 16 to 76

Section B



Construction for sizes 66 thru 76



ENGLISH

Size	Part Number	M _t Torque Rating lb-in@ 75 psi	Max. Speed (rpm)	C _s Centrifugal Loss (psi/rpm ²)	Wk ² (lb-ft ²)	Weight (lb)	Friction Area (in ²)	Friction New	Lining Thickness (ins) Worn	Air Tube Cavity (in ³)	Minimum Drum Diameter (ins)
16VC1000	142122	228,000	1400	27 E-06	380	430	940	0.32	0.16	510	15.91
20VC1000	142123	322,000	1300	37 E-06	618	568	1270	0.32	0.16	620	19.87
24VC1000	142124	438,000	1250	46 E-06	1104	756	1440	0.44	0.16	930	23.87
28VC1000	142125	592,000	1100	55 E-06	1652	862	1680	0.44	0.16	1060	27.81
32VC1000	142126	830,000	1050	63 E-06	3140	1248	1920	0.57	0.38	1200	31.81
38VC1200	142127	1,360,000	740	82 E-06	4660	1368	2720	0.57	0.38	1510	37.81
42VC1200	142128	1,638,000	670	86 E-06	7340	1790	3000	0.57	0.38	1700	41.75
46VC1200	142129	1,900,000	600	108 E-06	9660	1960	3180	0.68	0.38	2410	45.75
52VC1200	142131	2,430,000	550	127 E-06	14570	2384	3580	0.68	0.38	3020	51.75
51VC1600	142130	3,220,000	550	125 E-06	21160	3868	4760	0.66	0.30	4000	50.75
60VC1600	142132	4,366,000	520	145 E-06	41064	4900	5600	0.66	0.30	4700	59.75
66VC1600	142198	5,600,000	480	186 E-06	49700	5260	6160	0.66	0.30	3920	65.75
76VC1600	146509	7,300,000	416	241 E-06	72940	5970	6940	0.66	0.30	4800	75.75
76VC2000	146531	9,300,000	275	146 E-06	82084	6700	8390	0.66	0.30	4963	75.75

Size	Part Number	M _t Torque Rating N-m@ 5,2 bar	Max. Speed (rpm)	C _s Centrifugal Loss (bar/rpm ²)	J (kg-m ²)	Mass (kg)	Friction Area (cm ²)	Friction New	Lining Thickness (mm) Worn	Air Tube Cavity (dim ³)	Minimum Drum Diameter (mm)
16VC1000	142122	25,760	1400	1,86 E-06	15,96	195	6063	8	4	8,36	404
20VC1000	142123	36,380	1300	2,55 E-06	25,96	257	8192	8	4	10,2	505
24VC1000	142124	49,490	1250	3,17 E-06	46,37	342	9288	11	4	15,3	606
24VC1000	142125	66,890	1100	3,80 E-06	69,38	390	10836	11	4	17,4	706
32VC1000	142126	93,780	1050	4,35 E-06	131,9	565	12384	14	10	19,7	808
38VC1200	142127	153,660	740	5,66 E-06	195,7	620	17544	14	10	24,8	960
42VC1200	142128	185,070	670	5,93 E-06	308,3	811	19350	14	10	27,9	1060
46VC1200	142129	214,670	600	7,45 E-06	405,7	888	20516	17	10	39,5	1162
52VC1200	142131	274,550	550	8,76 E-06	611,9	1080	23097	17	10	49,5	1314
51VC1600	142130	363,810	550	8,63 E-06	888,7	1752	30702	17	8	65,6	1289
60VC1600	142132	493,290	520	10,01 E-06	1725	2220	36120	17	8	77,1	1518
66VC1600	142198	632,710	480	12,83 E-06	2087	2383	39732	17	8	64,3	1670
76VC1600	146509	827,050	416	16,66 E-06	3074	2705	45150	17	8	79,0	1924
76VC2000	146531	1,050,760	275	10,06 E-06	3461	3038	54128	17	8	81,7	1924

Airflex® Dual Wide VC Elements

Form VC-504 Sizes 16 to 76

Section B

ENGLISH

(Dimensions in inches)

Size	D ₂	D ₃	D ₂₅	G	H ₂	H ₆	H ₇	L No.	L Dia	O ₃ No.	O ₃ Size	Q (Deg)	V	W No.	W Width
16VC1000	23.69	0.31	0.63	25.500	24.375	16.22	24.38	12	0.500	4	0.38	15.00	0.78	16	22.13
20VC1000	23.69	0.31	0.63	29.500	28.375	20.22	28.38	12	0.500	4	0.38	15.00	0.78	16	22.13
24VC1000	23.69	0.39	0.63	34.000	32.750	24.22	32.50	16	0.625	4	0.50	11.25	0.78	20	22.13
28VC1000	23.69	0.39	0.63	38.000	36.750	28.22	36.50	16	0.625	4	0.50	11.25	0.78	20	22.13
32VC1000	23.81	0.39	0.63	43.875	42.625	32.22	42.13	24	0.625	4	0.50	7.50	0.81	24	23.19
38VC1200	28.06	0.47	0.66	49.375	47.875	38.22	48.00	20	0.750	4	0.63	9.00	0.88	24	26.31
42VC1200	28.06	0.47	0.66	53.625	52.125	42.22	52.25	24	0.750	4	0.63	7.50	0.88	28	26.31
46VC1200	28.06	0.55	0.75	60.250	58.500	46.25	57.50	24	0.875	4	0.63	7.50	0.88	32	26.31
52VC1200	29.06	0.55	1.13	67.000	65.500	52.25	65.00	32	0.875	4	0.88	5.63	1.13	36	26.81
51VC1600	37.06	0.55	1.13	67.000	65.500	51.25	65.00	32	0.875	4	0.88	5.63	1.13	36	34.81
60VC1600	37.56	0.61	1.38	77.000	75.000	60.43	74.25	36	1.000	4	0.88	5.00	1.25	40	35.06
66VC1600	37.00	0.78	1.38	82.123	79.625	66.22	78.38	40	1.312	4	0.88	4.50	1.25	44	34.50
76VC1600	37.00	0.88	1.38	92.123	89.625	76.72	88.38	48	1.312	4	0.88	3.75	1.25	50	34.50
76VC2000	45.00	0.88	1.38	92.123	89.625	76.72	88.38	48	1.312	4	0.88	3.75	1.25	50	42.56

SI

(Dimensions in millimeters)

Size	D ₂	D ₃	D ₂₅	G	H ₂	H ₆	H ₇	L No.	L Dia	O ₃ No.	O ₃ Size	Q (Deg)	V	W No.	W Width
16VC1000	602	8	16	647,7	619,1	412	619	12	12,7	4	10	15,00	20	16	562
20VC1000	602	8	16	749,3	720,7	514	721	12	12,7	4	10	15,00	20	16	562
24VC1000	602	10	16	863,6	831,9	615	826	16	15,9	4	13	11,25	20	20	562
28VC1000	602	10	16	965,2	933,5	717	927	16	15,9	4	13	11,25	20	20	562
32VC1000	605	10	16	1114,4	1082,7	818	1070	24	15,9	4	13	7,50	21	24	589
38VC1200	713	12	17	1254,1	1216,0	971	1219	20	19,1	4	16	9,00	22	24	668
42VC1200	713	12	17	1362,1	1324,0	1072	1327	24	19,1	4	16	7,50	22	28	668
42VC1200	713	14	19	1530,4	1485,9	1175	1461	24	22,2	4	16	7,50	22	32	668
52VC1200	738	14	29	1701,8	1663,7	1327	1651	32	22,2	4	22	5,63	29	36	681
51VC1600	941	14	29	1701,8	1663,7	1302	1651	32	22,2	4	22	5,63	29	36	884
60VC1600	954	15	35	1955,8	1905,0	1535	1886	36	25,4	4	22	5,00	32	40	891
66VC1600	940	20	35	2085,9	2022,5	1682	1991	40	33,3	4	22	4,50	32	44	876
76VC1600	940	22	35	2339,9	2276,5	1948	2245	48	33,3	4	22	3,75	32	50	876
76VC2000	1143	22	35	2339,9	2276,5	1948	2245	48	33,3	4	22	3,75	32	50	1081

Notes:

Part Number refers to basic part number only. When ordering, the number of air inlets and type of connection must be specified.

M_r — Dynamic torque shown, static torque approximately 25% greater. Torque in each application is dependent upon air pressure and speed.

Tolerance for sizes (G):

16 thru 20
+0.000/-0.005 in

(+0,00/-0,13 mm)

24 thru 28
+0.000/-0.008 in
(+0,00/-0,20 mm)

32 thru 60
+0.000/-0.010 in
(+0,00/-0,25 mm)

66 thru 76
+0.000/-0.005 in
(+0,00/-0,13 mm)

(L) Tolerance:

+0.005/-0.000 in
(+0,13/-0,00 mm)

(O₃) — All sizes available with either two or four outlets.

(Maximum Speed) — Maximum rpm is dependent upon operating conditions and varies for each application. Consult factory for applications exceeding these speeds.

(Air Tube Cavity) — Drum contact with worn shoes.

Airflex® VC Clutch Application

Form VC-529 — Air Bridge Arrangement —

Technical Data — Narrow Sizes 11.5 to 42

Section B

English ④	lb	lb · ft ²	lb	lb · ft ²	lb	lb · ft ²	lb	lb · ft ²
11.5VC500	96	43	46	9	35	2	2	0.3
14VC500	128	78	66	19	65	4	6	1.3
16VC600	151	115	94	35	62	4	14	10.3
20VC600	179	193	139	78	95	9	15	16
24VC650	246	369	178	148	124	19	19	25
28VC650	280	537	231	269	240	59	20	32
33VC650	392	1083	312	486	347	93	19	42
37VC650	433	1400	340	691	398	159	23	56
42VC650	485	1990	424	1100	545	243	24	66

Size	Element		Drum		Drum Hub		Air Bridge	
	Weight	Wk ²	Weight	Wk ²	Weight	Wk ²	Weight	Wk ²
	Mass	J	Mass	J	Mass	J	Mass	J
11.5VC500	43	1,81	21	0,38	16	0,08	1	0,01
14VC500	58	3,28	30	0,80	29	0,17	3	0,05
16VC600	68	4,83	43	1,47	28	0,17	6	0,43
20VC600	81	8,11	63	3,28	43	0,38	7	0,67
24VC650	111	15,50	81	6,22	56	0,80	9	1,05
28VC650	127	22,55	105	11,30	109	2,48	9	1,34
33VC650	178	45,49	141	20,41	157	3,91	9	1,76
37VC650	196	58,80	154	29,02	180	6,68	10	2,35
42VC650	220	83,58	192	46,20	247	10,21	11	2,77
SI ④	kg	kg · m ²	kg	kg · m ²	kg	kg · m ²	kg	kg · m ²

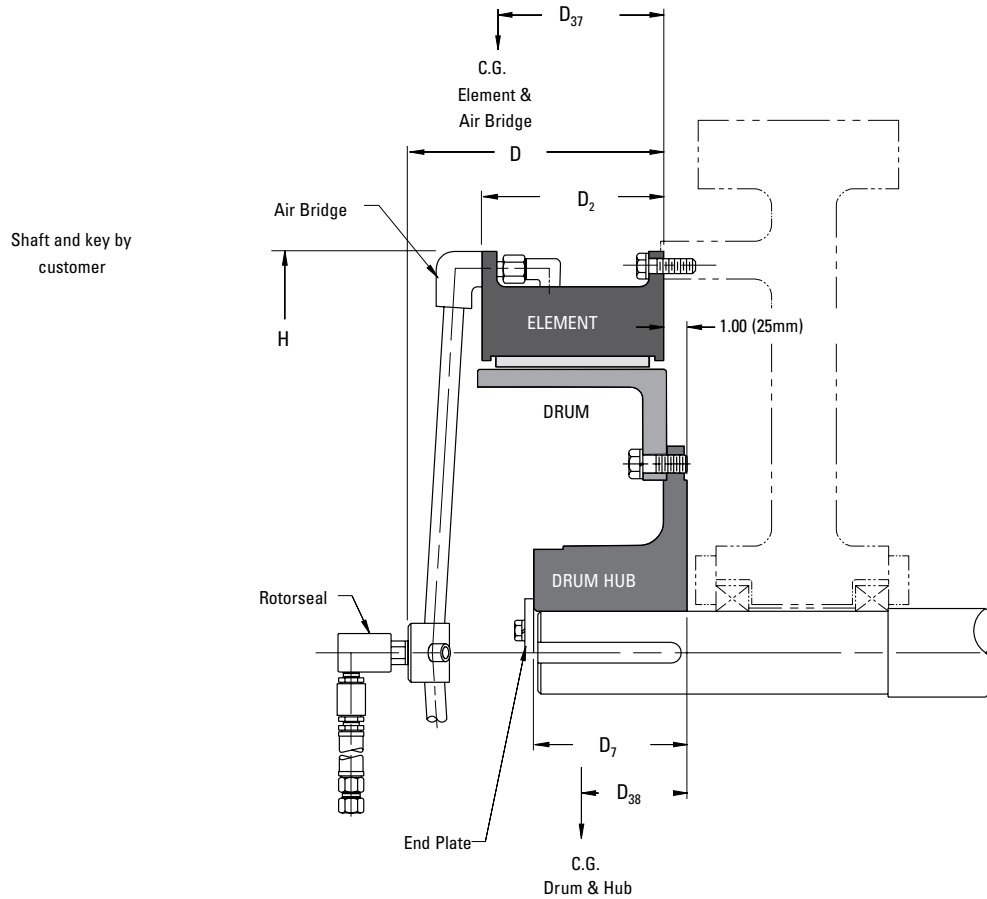
Size	Part Numbers			
	Element ⑤	Drum	Drum Hub	Air Bridge
11.5VC500	142639	408290	406960	410546
14VC500	143829	408283	406962	408165
16VC600	142640	408292	406964	407294
20VC600	142641	408294	406966	407307
24VC650	142642	408296	406968	411796
28VC650	142643	409479	406970	400203
33VC650	142644	408300	406972	413799
37VC650	142645	408302	406974	411797
42VC650	142647	408304	407000	411798

Notes:

- ① Refers to basic part number only and does not include the rotor seal and hose. When ordering, the number and type of element connections must be specified.
- ② Dynamic torque shown, static torque approximately 25% greater. Torque in each application is dependent upon air pressure and speed.
- ③ Based upon minimum bores. Rotor seal and hose not included.
- ④ Based upon minimum bores.
- ⑤ Refers to basic part number only. When ordering, the number of air inlets and type of connection must be specified.

Airflex® VC Clutch Application

Form VC-529 — Air Bridge Arrangement —
Dimensional Data — Narrow Sizes 11.5 to 42
Section B



English		lb · in @ 75 psi		lb Ⓟ	Dimensions in inches							
111.5VC500	107040	27000	B3	183	2.50	4.13	10.13	6.13	5.00	3.2	2.9	19.63
14VC500	107041	39200	C2	266	2.75	5.00	9.75	6.13	5.75	3.3	3.3	23.50
16VC600	107042	65000	C2	327	3.25	5.00	11.06	7.38	5.75	4.2	3.4	25.50
20VC600	107043	93000	C2	434	3.75	5.50	11.19	7.38	6.50	4.0	3.4	29.50
24VC650	107044	135000	C2	608	4.25	6.00	11.81	7.69	6.50	4.3	3.0	34.00
28VC650	107045	182000	C2	742	4.75	8.00	11.94	7.69	8.00	4.2	3.2	38.00
33VC650	107046	255000	3/4 RH	1004	5.25	9.50	11.97	7.69	9.00	4.1	3.3	44.63
37VC650	107047	320000	3/4 RH	1128	5.50	9.50	12.25	7.69	9.00	4.2	3.2	48.63
42VC650	107048	380000	3/4 RH	1442	6.00	10.50	12.41	7.69	10.00	4.1	3.4	53.63

Size	Part Number	Torque Rating	Rotorseal Size	Weight Mass	Bore Range		D	D ₂	D ₇	D ₃₇	D ₃₈	H
					Min	Max						
11.5VC500	107040	3050	B3	83	64	105	257	156	127	81	74	499
14VC500	107041	4430	C2	120	70	127	248	156	146	84	84	597
16VC600	107042	7350	C2	148	83	127	281	187	146	107	86	648
20VC600	107043	10500	C2	197	95	140	284	187	165	102	86	749
24VC650	107044	15300	C2	275	108	152	300	195	165	109	76	864
28VC650	107045	20600	C2	336	121	203	303	195	203	107	81	965
33VC650	107046	28800	3/4 RH	455	133	241	304	195	229	104	84	1134
37VC650	107047	36200	3/4 RH	511	140	241	311	195	229	107	81	1235
42VC650	107048	42900	3/4 RH	653	152	267	315	195	254	104	86	1362

SI		N · m @ 5, 2 bar		kg Ⓟ	Dimensions in millimeters						
----	--	---------------------	--	------	---------------------------	--	--	--	--	--	--

Airflex® VC Clutch Application

Form VC-532 — Gap Mounted Arrangement —

Technical Data — Narrow Sizes 11.5 to 42

Section B

English [⊙]	lb	lb · ft ²	lb	lb · ft ²	lb	lb · ft ²	lb	lb · ft ²
11.5VC500	96	43	70	19	83	16	35	2
14VC500	128	78	102	35	139	40	65	4
16VC600	151	115	139	50	175	66	62	4
20VC600	179	193	224	122	234	138	95	9
24VC650	246	369	260	174	293	258	124	19
28VC650	280	537	514	534	348	472	240	59
33VC650	392	1083	716	811	507	827	347	93
37VC650	433	1400	940	1404	553	1172	398	159
42VC650	485	1990	1284	2106	662	1809	545	243

Size	Element		Spider		Drum		Drum Hub	
	Weight	Wk ²	Weight	Wk ²	Weight	Wk ²	Weight	Wk ²
	Mass	J	Mass	J	Mass	J	Mass	J
11.5VC500	43	1,81	32	0,80	38	0,67	16	0,08
14VC500	58	3,28	46	1,47	63	1,68	29	0,17
16VC600	68	4,83	63	2,10	79	2,77	28	0,17
20VC600	81	8,11	101	5,12	106	5,80	43	0,38
24VC650	111	15,50	118	7,31	133	10,84	56	0,80
28VC650	127	22,55	233	22,43	158	19,82	109	2,48
33VC650	178	45,49	324	34,06	230	34,73	157	3,91
37VC650	196	58,80	426	58,97	251	49,22	180	6,68
42VC650	220	83,58	582	88,45	300	75,98	247	10,21
SI [⊙]	kg	kg · m ²	kg	kg · m ²	kg	kg · m ²	kg	kg · m ²

Size	Part Numbers			
	Element [⊙]	Spider	Drum	Drum Hub
11.5VC500	142639	408376	408307	406959
14VC500	143829	411170	408309	406961
16VC600	142640	408277	408311	406963
20VC600	142641	408279	410862	406965
24VC650	142642	408281	409804	405625
28VC650	142643	505480	409706	406969
33VC650	142644	505285	410022	406971
37VC650	142645	505275	410866	406973
42VC650	142647	502369	409964	406975

Notes:

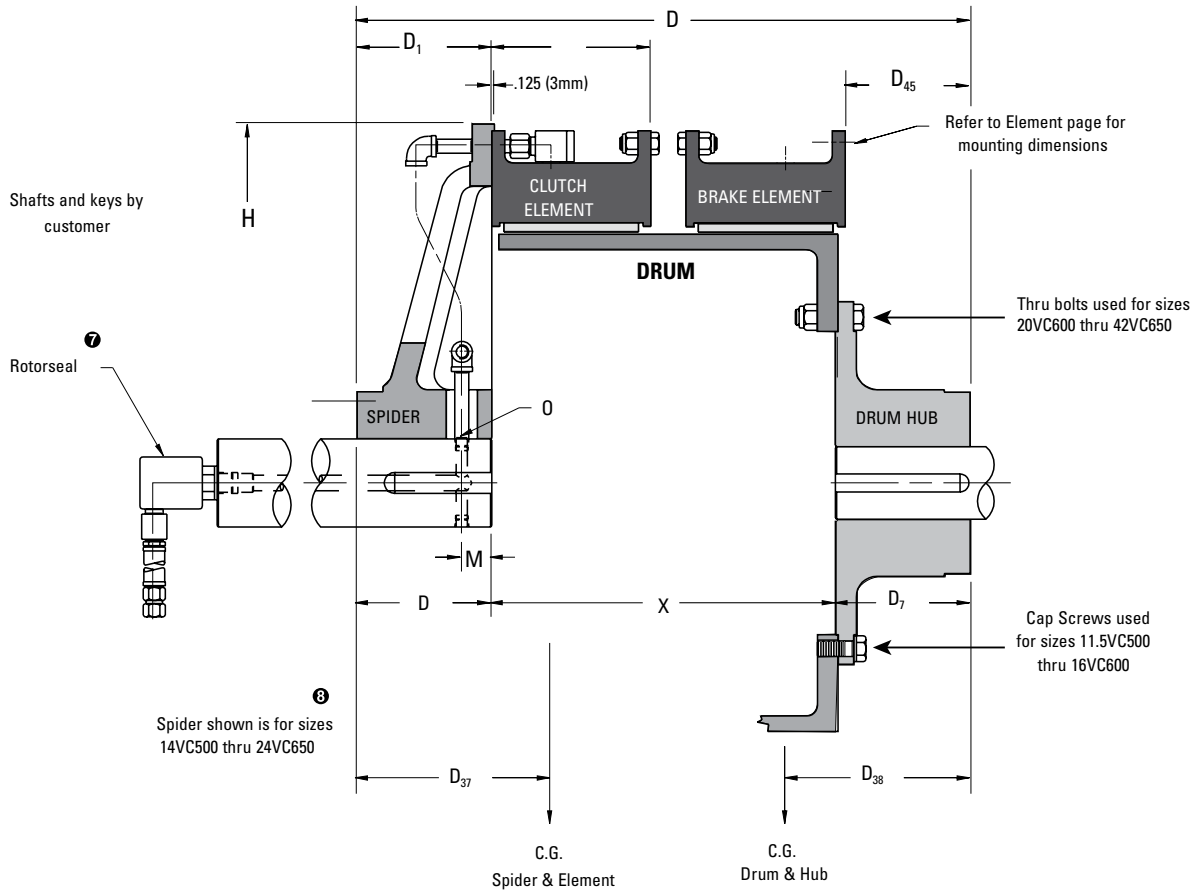
- ① Refers to basic part number only and does not include the rotor seal and hose. When ordering, the number and type of element connections must be specified.
- ② Dynamic torque shown, static torque approximately 25% greater. Torque in each application is dependent upon air pressure and speed.
- ③ Based upon minimum bores. Rotor seal and hose not included.
- ④ $M(\text{in})=0.268(H/2-\text{radius of bore})+0.34$
 $M(\text{mm})=0,268(H/2-\text{radius of bore})+8,7$
- ⑤ American National Pipe Thread
- ⑥ Pipe tap not required. Thru hole diameter 0.44 in (11 mm).
- ⑦ Refer to Rotor seal Section for mounting and dimension information.
- ⑧ Refer to VC Spider Piping and Configuration catalog page for other sizes.
- ⑨ Based upon minimum bores.
- ⑩ Refers to basic part number only. When ordering, the number of air inlets and type of connection must be specified.

Airflex® VC Clutch Application

Form VC-532 — Gap Mounted Arrangement —

Dimensional Data — Narrow Sizes 11.5 to 42

Section B



English		lb · in @ 75 psi	lb Ⓞ	Dimensions in inches													
Size	Part Number	M _t Torque Rating	Rotorseal Size	Mass	Bore Range	D	D ₁	D ₂	D ₇	D ₃₇	D ₃₈	D ₄₅	H	M	O Ⓞ	X	
					Min	Max.											
11.5VC500	107594	27000	B3	380	2.50	4.13	22.72	4.34	6.13	5.00	5.3	8.3	4.50	20.00	④	⑥	13.38
14VC500	107595	39200	B3	562	2.75	5.00	24.69	5.50	6.13	5.75	6.0	8.7	5.19	24.00	1.44	3/8-18	13.44
16VC600	107596	65000	B3	678	3.25	5.00	27.19	5.50	7.38	5.75	6.2	9.8	5.19	26.00	1.44	3/8-18	15.94
20VC600	107597	93000	C2	911	3.75	5.50	28.44	6.00	7.38	6.50	6.0	10.0	5.94	30.00	1.44	3/8-18	15.94
24VC650	107598	135000	C2	1169	4.25	6.00	29.69	6.50	7.69	6.50	6.6	10.4	5.94	34.63	1.44	3/8-18	16.69
28VC650	107599	182000	C2	1662	4.75	8.00	32.69	8.00	7.69	8.00	6.9	10.7	7.45	38.63	5.00	1/2-14	16.69
33VC650	107600	255000	3/4 RH	2354	5.25	9.50	34.75	9.00	7.69	9.00	7.5	11.3	8.45	45.25	5.00	1/2-14	16.75
37VC650	107774	320000	3/4 RH	2757	5.50	9.50	35.75	10.00	7.69	9.00	7.9	11.3	8.45	49.25	6.00	1/2-14	16.75
42VC650	107775	380000	3/4 RH	3461	6.00	10.50	37.75	11.00	7.69	10.00	8.2	11.7	9.45	54.25	6.00	1/2-14	16.75
SI	Part Number	N · m @ 5, 2 bar	Rotorseal Size	kg Ⓞ	Dimensions in millimeters												
11.5VC500	107594	3050	B3	172	64	105	577	110	156	127	135	211	114	508	④	⑥	340
14VC500	107595	4430	B3	255	70	127	627	140	156	146	152	221	132	610	37	3/8-18	341
16VC600	107596	7350	B3	307	83	127	691	140	187	146	157	249	132	660	37	3/8-18	405
20VC600	107597	10500	C2	413	95	140	722	152	187	165	152	254	151	762	37	3/8-18	405
24VC650	107598	15300	C2	530	108	152	754	165	195	165	168	264	151	880	37	3/8-18	424
28VC650	107599	20600	C2	753	121	203	830	203	195	203	175	272	189	981	127	1/2-14	424
33VC650	107600	28800	3/4 RH	1066	133	241	883	229	195	229	191	287	215	1149	127	1/2-14	425
37VC650	107774	36200	3/4 RH	1249	140	241	908	254	195	229	201	287	215	1251	152	1/2-14	425
42VC650	107775	42900	3/4 RH	1568	152	267	959	279	195	254	208	297	240	1378	152	1/2-14	425

Airflex® VC Brake Application

Form VC-526 — Technical Data — Narrow Sizes 11.5 to 42

Section B

English ③	lb	lb	lb · ft ²	lb	lb · ft ²
11.5VC500	96	46	9	35	2
14VC500	128	66	19	65	4
16VC600	151	94	35	62	4
20VC600	179	139	78	95	9
24VC650	246	178	148	124	19
28VC650	280	231	269	240	59
33VC650	392	312	486	347	93
37VC650	433	340	691	398	159
42VC650	485	424	1100	545	243

Size	Element		Drum		Drum Hub	
	Weight Mass	Weight Mass	Wk ² J	Weight Mass	Wk ² J	
11.5VC500	43	21	0,38	16	0,08	
14VC500	58	30	0,80	29	0,17	
16VC600	68	43	1,47	28	0,17	
20VC600	81	63	3,28	43	0,38	
24VC650	111	81	6,22	56	0,80	
28VC650	127	105	11,30	109	2,48	
33VC650	178	141	20,41	157	3,91	
37VC650	196	154	29,02	180	6,68	
42VC650	220	192	46,20	247	10,21	
SI ④	kg	kg	kg · m ²	kg	kg · m ²	

Size	Part Numbers		
	Element ①	Drum	Hub
11.5VC500	142639	408290	406960
14VC500	143829	408283	406962
16VC600	142640	408292	406964
20VC600	142641	408294	406966
24VC650	142642	408296	415398
28VC650	142643	409479	406970
33VC650	142644	408300	406972
37VC650	142645	408302	406974
42VC650	142647	408304	407000

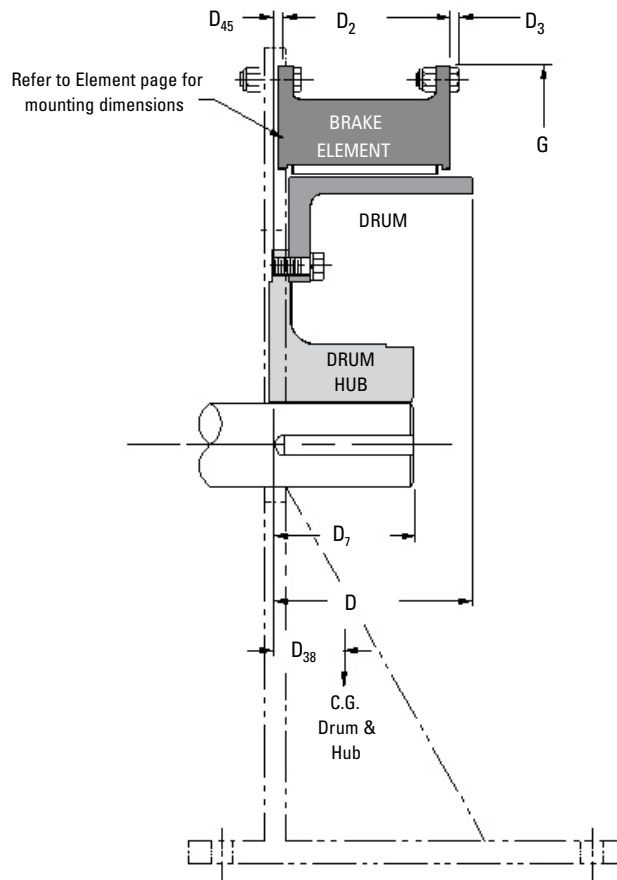
Notes:

- ① Refers to basic part number only. When ordering, the number of air inlets and type of connection must be specified.
- ② Dynamic torque shown, static torque approximately 25% greater. Torque in each application is dependent upon air pressure and speed.
- ③ Based upon minimum bores.
- ④ Tolerance for sizes:
 11.5 thru 20 +0.000/-0.005 in (+0,00/-0,13 mm)
 24 thru 28 +0.000/-0.008 in (+0,00/-0,20 mm)
 33 thru 42 +0.000/-0.010 in (+0,00/-0,13 mm)

Airflex® VC Brake Application

Form VC-526 — Dimensional Data — Narrow Sizes 11.5 to 4242

Section B



English		lb · in @ 75 psi	lb ⌀	Dimensions in inches							
11.5VC500	105861	27000	177	2.50	4.13	7.25	6.13	5.00	2.9	0.94	19.625
14VC500	105862	39200	259	2.75	5.00	7.38	6.13	5.75	3.1	1.07	23.500
16VC600	105863	65000	307	3.25	5.00	8.50	7.38	5.75	3.3	0.94	25.500
20VC600	105864	93000	413	3.75	5.50	8.63	7.38	6.50	3.2	1.06	29.500
24VC650	105865	135000	548	4.25	6.00	9.13	7.69	6.50	3.2	1.16	34.000
28VC650	105866	182000	751	4.75	8.00	9.13	7.69	8.00	3.2	1.16	38.000
33VC650	105867	255000	1051	5.25	9.50	9.13	7.69	9.00	3.5	1.16	44.625
37VC650	105868	320000	1171	5.50	9.50	9.13	7.69	9.00	3.2	1.16	48.625
42VC650	105869	380000	1454	6.00	10.50	9.13	7.69	10.00	3.4	1.16	53.625

Size	⌀ Part Number	⌀ M. Torque Rating	Weight Mass	Bore Range		D	D ₂	D ₇	D ₃₈	D ₄₅	⌀ G
				Min	Max						
11.5VC500	105861	3050	80	64	105	184	156	127	74	24	498,5
14VC500	105862	4430	117	70	127	187	156	146	79	27	596,9
16VC600	105863	7350	139	83	127	216	187	146	84	24	647,7
20VC600	105864	10500	187	95	140	219	187	165	81	27	749,3
24VC650	105865	15300	248	108	152	232	195	165	81	29	863,6
28VC650	105866	20600	340	121	203	232	195	203	81	29	965,2
33VC650	105867	28800	476	133	241	232	195	229	89	29	1133,5
37VC650	105868	36200	530	140	241	232	195	229	81	29	1235,1
42VC650	105869	42900	659	152	267	232	195	254	86	29	1362,1

SI		N · m @ 5, 2 bar	kg ⌀	Dimensions in millimeters							
----	--	---------------------	------	---------------------------	--	--	--	--	--	--	--

Airflex® VC Brake Application

Form VC-538 — Technical Data — Wide Sizes 14 to 66

Section B

English ③	lb	lb	lb · ft²	lb	lb · ft²
14VC1000	213	122	35	70	5
16VC1000	240	98	38	106	10
20VC1000	282	169	112	173	23
24VC1000	378	225	192	243	47
28VC1000	431	295	350	332	88
32VC1000	624	371	559	450	133
38VC1200	684	552	1214	600	253
42VC1200	895	582	1567	780	430
46VC1200	980	729	2357	950	690
52VC1200	1192	852	3552	1212	1138
51VC1600	1934	890	4145	1961	2167
60VC1600	2450	1640	8810	2604	3270
66VC1600	2630	1905	19360	4940	6760

Size	Element		Drum		Drum Hub	
	Weight	Weight	Wk²	Weight	Wk²	
	Mass	Mass	J	Mass	J	
14VC1000	96	55	1,47	32	0,21	
16VC1000	109	44	1,60	48	0,42	
20VC1000	128	77	4,70	78	0,97	
24VC1000	171	102	8,06	110	1,97	
28VC1000	195	134	14,70	150	3,70	
32VC1000	283	168	23,48	204	5,59	
38VC1200	310	250	50,99	272	10,63	
42VC1200	405	264	65,81	353	18,06	
46VC1200	444	330	98,99	430	28,98	
52VC1200	540	386	149,2	549	47,80	
51VC1600	876	403	174,1	888	91,01	
60VC1600	1110	743	370,0	1180	137,3	
66VC1600	1191	863	813,1	2238	283,9	
SI ⑥	kg	kg	kg · m²	kg	kg · m²	

Size	Part Numbers		
	Element ①	Drum	Drum Hub
14VC1000	142838	411111	411113
16VC1000	142821	409506	407069
20VC1000	142832	410087	407073
24VC1000	142675	409794	405625
28VC1000	142674	409537	405628
32VC1000	142673	410824	405631
38VC1200	142739	409474	405634
42VC1200	142677	409947	405637
46VC1200	142671	409980	405640
52VC1200	142841	409715	407079
51VC1600	142835	409711	408585
60VC1600	142915	411501	411500
66VC1600	142097	413727	

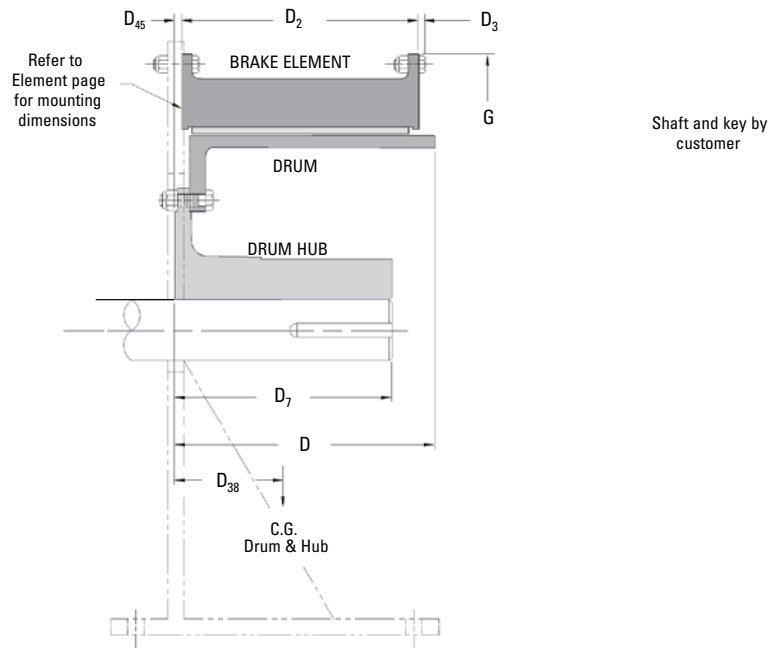
Notes:

- ① Refers to basic part number only. When ordering, the number of air inlets and type of connection must be specified.
- ② Dynamic torque shown, static torque approximately 25% greater. Torque in each application is dependent upon air pressure and speed.
- ③ Based upon minimum bores.
- ④ Tolerance for sizes:
 14 thru 20 +0.000/-0.005 in (+0,00/-0,13 mm)
 24 thru 28 +0.000/-0.008 in (+0,00/-0,20 mm)
 32 thru 60 +0.000/-0.010 in (+0,00/-0,25 mm)
 66 +0.000/-0.005 in (+0,00/-0,13 mm)

Airflex® VC Brake Application

Form VC-538 — Dimensional Data — Wide Sizes 14 to 66

Section B



English		lb · in @ 75 psi	lb ⌀	Dimensions in inches							
14VC1000	107601	85000	405	3.63	5.00	12.38	11.56	7.00	5.0	0.75	23.500
16VC1000	107602	114000	444	3.88	6.00	12.38	11.56	5.50	3.9	0.75	25.500
20VC1000	107603	161000	624	4.50	6.25	12.38	11.56	7.00	4.3	0.75	29.500
24VC1000	107604	219000	846	5.00	8.00	12.63	11.56	7.50	4.4	1.00	34.000
28VC1000	107605	296000	1058	5.50	8.50	12.63	11.56	8.00	4.4	1.00	38.000
32VC1000	107606	415000	1445	6.00	9.00	12.63	11.63	9.50	4.6	1.00	43.875
38VC1200	107607	680000	1836	7.25	9.25	14.75	13.75	10.00	5.1	1.00	49.375
42VC1200	107608	819000	2257	7.50	10.00	14.75	13.75	11.00	5.0	1.00	53.625
46VC1200	107609	950000	2659	8.00	10.00	15.00	13.75	11.00	5.0	1.25	60.250
52VC1200	107610A	1215000	3256	8.75	11.00	15.25	14.25	12.50	5.1	1.25	67.000
51VC1600	107611	1610000	4785	9.50	12.50	19.50	18.25	15.00	6.7	1.25	67.000
60VC1600	107612	2183000	6694	10.50	18.00	19.63	18.50	16.00	6.9	1.50	77.000
66VC1600	107613	2800000	9475	11.25	18.50	20.38	18.50	20.00	8.7	2.00	82.123

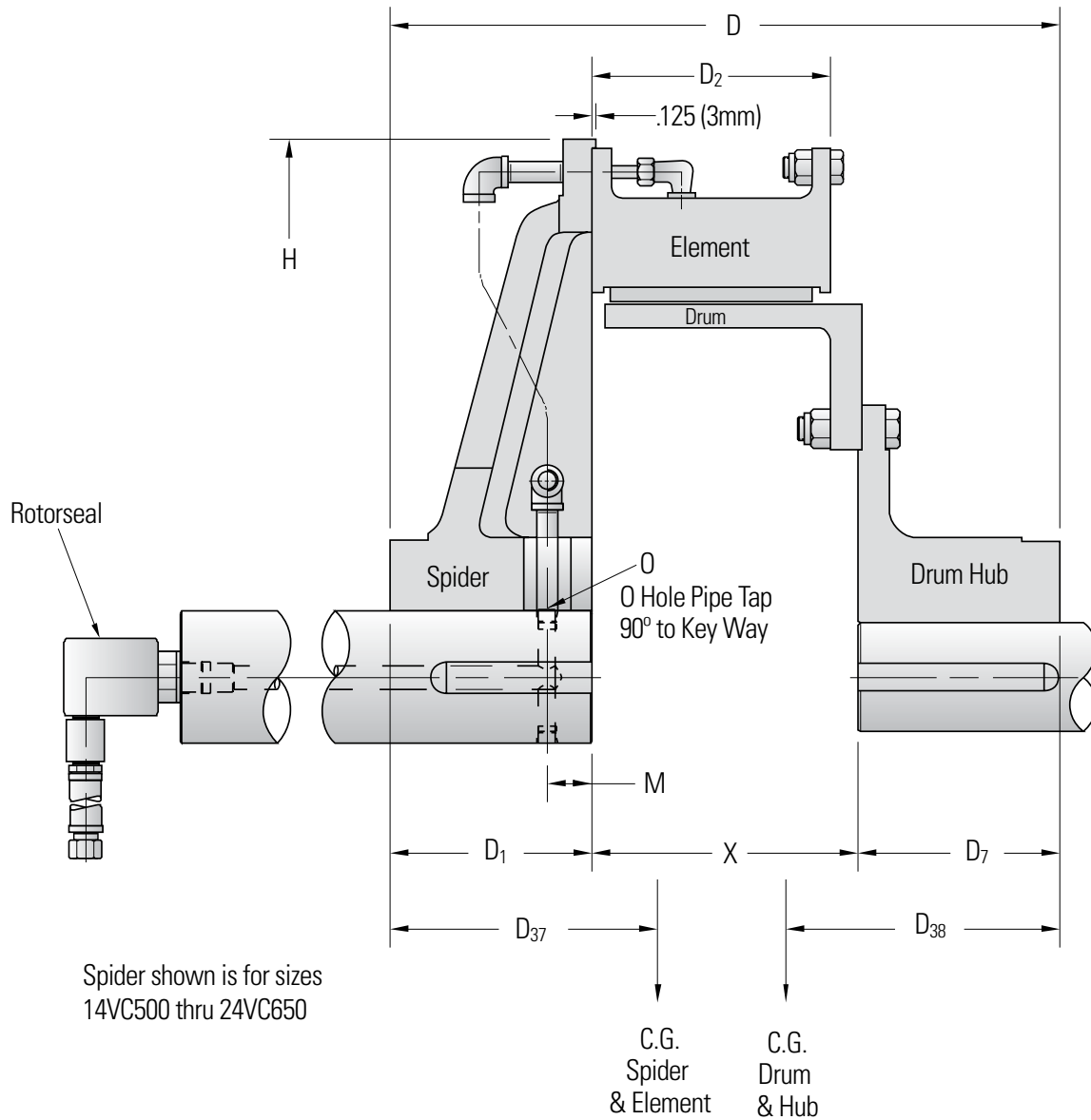
Size	Part Number	M _r Torque Rating	Weight Mass	Bore Range		D	D ₂	D ₇	D ₃₈	D ₄₅	G
				Min	Max						
14VC1000	107601	9610	183	92	127	314	294	178	127	19	596,9
16VC1000	107602	12900	201	99	152	314	294	140	99	19	647,7
20VC1000	107603	18200	283	114	159	314	294	178	109	19	749,3
24VC1000	107604	24700	383	127	203	321	294	191	112	25	863,6
28VC1000	107605	33400	479	140	216	321	294	203	112	25	965,2
32VC1000	107606	46900	655	152	229	321	295	241	117	25	1114,4
38VC1200	107607	76800	832	184	235	375	349	254	130	25	1254,1
42VC1200	107608	92500	1022	191	254	375	349	279	127	25	1362,1
46VC1200	107609	107000	1205	203	254	381	349	279	127	32	1530,4
52VC1200	107610A	137000	1475	222	279	387	362	318	130	32	1701,8
51VC1600	107611	182000	2168	241	318	495	464	381	170	32	1701,8
60VC1600	107612	247000	3032	267	457	499	470	406	175	38	1955,8
66VC1600	107613	316000	4292	286	470	518	470	508	221	51	2085,9

SI		N · m @ 5, 2 bar	kg ⌀	Dimensions in millimeters							
----	--	---------------------	------	---------------------------	--	--	--	--	--	--	--

Airflex® VC Clutch Application

Form VC-506 Single Narrow Series

Section B



Airflex® VC Clutch Application

Form VC-506 Single Narrow Series

Section B

English				Bore Range (inches)			
Size	Basic B/M	Torque Rating (lb-ins) at 75 PSI	Weight (lbs)	Spider Min.	Spider Max.	Hub Min.	Hub Max.
11.5VC500	104601	27,000	247	2.500	4.125	2.500	4.125
14VC500	104602	39,200	362	2.750	5.000	2.750	5.000
16VC600	104603	65,000	446	3.250	5.000	3.250	5.000
20VC600	104604	93,000	637	3.750	5.500	3.750	5.500
24VC650	104605	135,000	828	4.250	6.000	4.250	6.000
28VC650	104606	182,000	1265	4.750	8.000	4.750	8.000
33VC650	104607	255,000	1767	5.250	9.500	5.250	9.500
37VC650	104608	320,000	2111	5.500	9.500	5.500	9.500
42VC650	104609	380,000	2738	6.000	10.500	6.000	10.500

SI				Bore Range (millimeters)			
Size	Basic B/M	Torque Rating (N-m) at 5,2 bar	Mass (kg)	Spider Min.	Spider Max.	Hub Min.	Hub Max.
11.5VC500	104601	3,050	112	64	105	64	105
14VC500	104602	4,430	164	70	127	70	127
16VC600	104603	7,340	202	83	127	83	127
20VC600	104604	10,505	289	95	140	95	140
24VC650	104605	15,250	375	108	152	108	152
28VC650	104606	20,560	573	121	203	121	203
33VC650	104607	28,810	800	133	241	133	241
37VC650	104608	36,155	956	140	241	140	241
42VC650	104609	42,930	1241	152	267	152	267

English (Dimensions in inches)											Clearance for "Drop Out"	
Size	D	D ₁	D ₂	D ₇	D ₃₇	D ₃₈	H	M	O	X	Element	Drum
11.5VC500	16.09	4.344	6.125	5.000	5.3	5.5	20.000	1	2	6.750	.27	.12
14VC500	18.06	5.500	6.125	5.750	6.0	5.8	24.000	1.438	¾-18 NPT	6.812	.25	.19
16VC600	19.31	5.500	7.375	5.750	6.2	6.5	26.000	1.438	¾-18 NPT	8.062	.25	.19
20VC600	20.56	6.000	7.375	6.500	6.0	6.9	30.000	1.438	¾-18 NPT	8.062	.25	.19
24VC650	21.56	6.500	7.688	6.500	6.6	7.2	34.625	1.438	¾-18 NPT	8.562	.36	.19
28VC650	24.56	8.000	7.688	8.000	6.9	7.9	38.625	5.000	½-14 NPT	8.562	.36	.19
33VC650	26.56	9.000	7.688	9.000	7.5	8.3	45.250	5.000	½-14 NPT	8.562	.28	.19
37VC650	27.56	10.000	7.688	9.000	7.9	8.4	49.250	6.000	½-14 NPT	8.562	.28	.19
42VC650	29.56	11.000	7.688	10.000	8.2	9.0	54.250	6.000	½-14 NPT	8.562	.28	.19

SI (Dimensions in millimeters)											Clearance for "Drop Out"	
Size	D	D ₁	D ₂	D ₇	D ₃₇	D ₃₈	H	M	O	X	Element	Drum
11.5VC500	409	110	156	127	135	140	508	1	2	171	6,8	3,1
14VC500	459	140	156	146	152	147	610	37	¾-18 NPT	173	6,3	4,8
16VC600	490	140	187	146	157	165	660	37	¾-18 NPT	205	6,3	4,8
20VC600	522	152	187	165	152	175	762	37	¾-18 NPT	205	6,3	4,8
24VC650	548	165	195	165	168	183	880	37	¾-18 NPT	217	9,1	4,8
28VC650	624	203	195	203	175	201	981	127	½-14 NPT	217	9,1	4,8
33VC650	675	229	195	229	191	211	1149	127	½-14 NPT	217	7,1	4,8
37VC650	700	254	195	229	201	213	1251	152	½-14 NPT	217	7,1	4,8
42VC650	751	279	195	254	208	229	1378	152	½-14 NPT	217	7,1	4,8

1 M(in)=0.268 (H/2-radius of bore) +0.34 M(mm)=0.268 (H/2-radius of bore) +8.7

2 Pipe tap not required. Thru hole diameter 0.44 in (11 mm).

Ventilated Adapter Arrangement

Technical Data

Form VC 507 — Dual Narrow Sizes 11.5 to 42

Section B

English ^⑥	lb	lb ft ²	lb	lb ft ²	lb	lb ft ²	lb	lb ft ²	lb	lb ft ²
11.5VC500	197	86	73	35	64	4	83	16	43	2
14VC500	258	156	103	70	74	8	139	40	60	4
16VC600	307	230	130	108	108	15	175	66	82	6
20VC600	363	386	146	167	166	34	234	138	124	13
24VC650	497	738	194	297	250	68	293	258	215	42
28VC650	565	1074	219	424	324	119	348	472	292	85
33VC650	784	2166	259	686	532	342	507	827	395	123
37VC650	871	2800	321	1026	595	360	553	1172	528	240
42VC650	980	3980	378	1550	769	608	662	1809	647	413
Size	Weight Wk ²		Weight Wk ²		Weight Wk ²		Weight Wk ²		Weight Wk ²	
	Element		Ventilated Adapter		Adapter Hub		Drum		Drum Hub	
	Mass	J	Mass	J	Mass	J	Mass	J	Mass	J
11.5VC500	89	3,61	33	1,47	29	0,17	38	0,67	19	0,08
14VC500	117	6,55	47	2,94	34	0,33	63	1,68	27	0,17
16VC600	139	9,66	59	4,54	49	0,63	79	2,77	37	0,25
20VC600	164	16,21	66	7,01	75	1,43	106	5,80	56	0,55
24VC650	225	31,00	88	12,47	113	2,86	133	10,84	97	1,76
28VC650	256	45,11	99	17,81	147	5,00	158	19,82	132	3,57
33VC650	355	90,97	117	28,81	241	14,36	230	34,73	179	5,17
37VC650	395	117,6	145	43,09	270	15,12	251	49,22	239	10,08
42VC650	444	167,2	171	65,10	348	25,54	300	75,98	293	17,35
SI ^⑥	kg	kg m ²	kg	kg m ²	kg	kg m ²	kg	kg m ²	kg	kg m ²

Size	Part Numbers				
	Element ^⑦	Ventilated Adapter	Adapter Hub	Drum	Drum Hub
11.5VC500	142112	406949	408232	408307	406945
14VC500	142114	406950	408234	408309	406961
16VC600	142115	505030	408236	408311	407027
20VC600	142116	504974	408238	408313	406376
24VC650	142117	504975	408240	411828	405625
28VC650	142118	504976	408242	408317	405628
33VC650	142119	504977	408244	408319	405631
37VC650	142120	504978	408246	408321	405634
42VC650	142121	504979	408248	408323	405637

Notes:

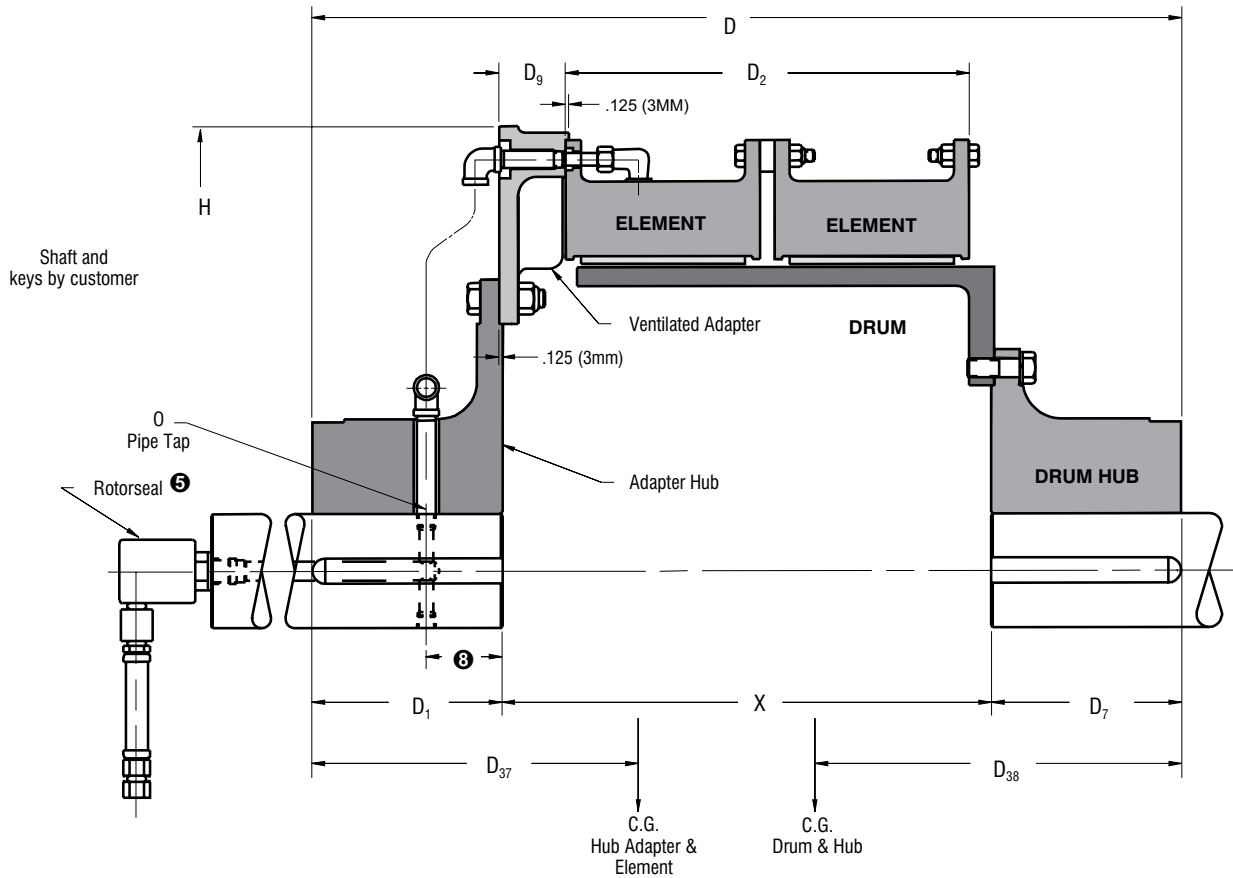
- ^① Refers to basic part number only and does not include the rotor seal and hose. When ordering, the number and type of element connections must be specified.
- ^② Dynamic torque shown, static torque approximately 25% greater. Torque in each application is dependent upon air pressure and speed.
- ^③ Based upon minimum bores. Rotor seal and hose not included.
- ^④ American National Pipe Thread. Shaft to adapter piping similar to that shown on VC Spider Pipe and Configuration catalog page.
- ^⑤ Refer to Rotor Seal Section for mounting and dimension information.
- ^⑥ Based upon minimum bores.
- ^⑦ Refers to basic part number only. When ordering, the number of air inlets and type of connection must be specified.
- ^⑧ Through hole in adapter hub is normally not provided. If required, the dimension is 3.00 in (76,2mm)

Ventilated Adapter Arrangement

Dimensional Data

Form VC 507 — Dual Narrow Sizes 11.5 to 42

Section B

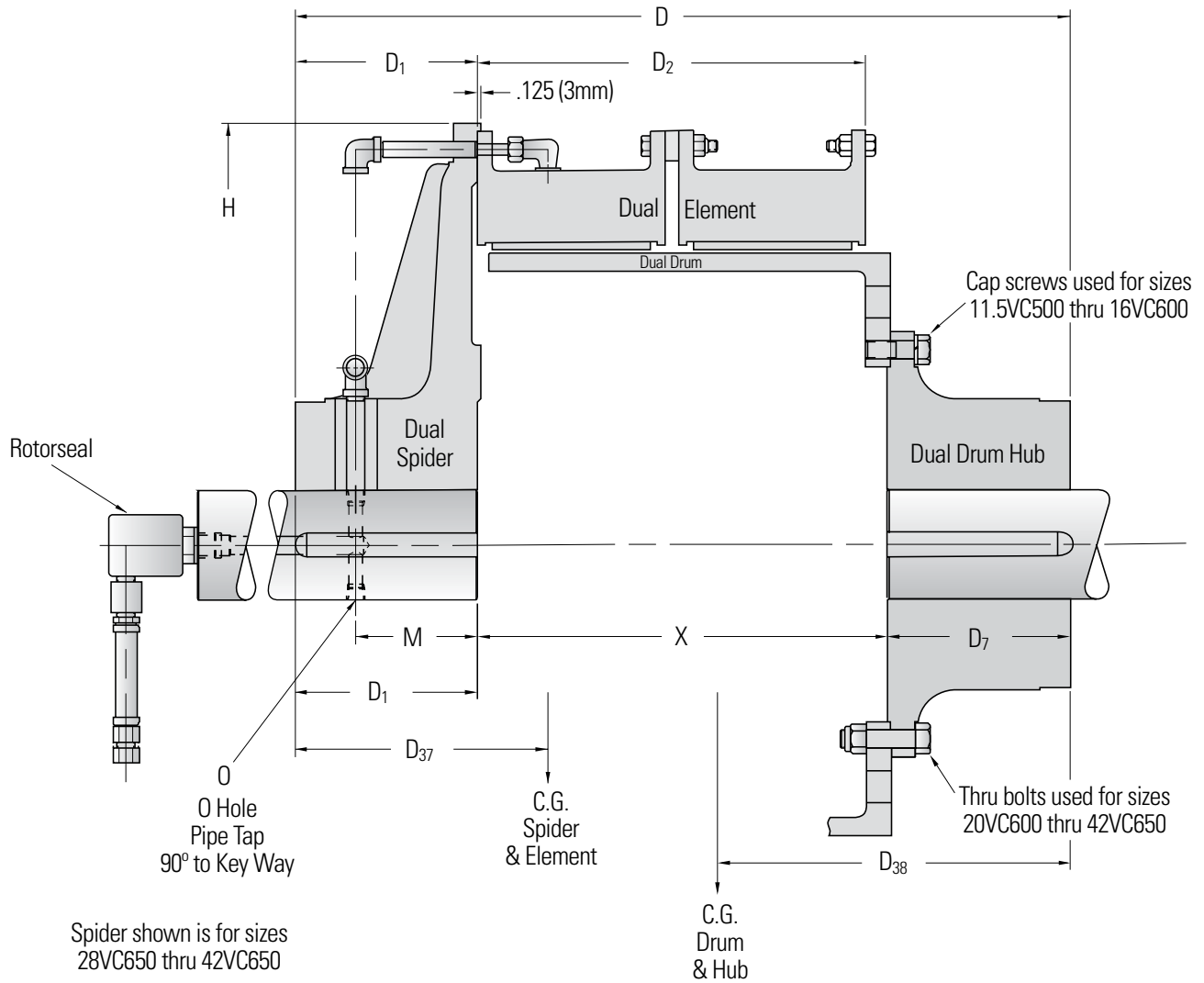


English		lb in @ 75 psi	lb ^⑤	Dimensions in inches													
11.5VC500	104298	54000	C2	460	3.00	4.00	28.75	5.75	12.75	7.00	2.75	10.9	9.4	20.38	2	1/4-18	16.00
14VC500	105435	78400	C2	634	3.50	4.75	27.50	5.75	12.69	5.75	2.75	11.0	8.9	24.63	2	1/2-14	16.00
16VC600	105436	130000	C2	802	4.25	5.00	31.56	6.50	15.19	6.50	2.75	12.4	9.8	26.63	2	1/2-14	18.56
20VC600	104299	186000	C2	1033	4.75	6.00	32.56	7.00	15.19	7.00	2.75	12.2	9.7	30.63	2	1/2-14	18.56
24VC650	105437	270000	3/4 RH	1449	5.25	7.50	34.31	7.50	15.94	7.50	2.75	12.6	9.7	35.13	2	1/2-14	19.31
28VC650	105438	364000	3/4 RH	1748	5.75	8.50	35.31	8.00	15.94	8.00	2.75	12.8	9.9	39.13	2	1/2-14	19.31
33VC650	105439	510000	1RH	2477	6.50	9.00	38.38	9.50	15.94	9.50	2.75	13.8	11.0	45.88	2	3/4-14	19.38
37VC650	105440	640000	1RH	2868	7.00	9.50	39.38	10.00	15.94	10.00	2.75	14.2	11.2	49.88	2	3/4-14	19.38
42VC650	105441	760000	1 1/4 RH	3436	7.50	10.50	41.38	11.00	15.94	11.00	2.75	14.7	11.5	54.88	2	3/4-14	19.38
Size	Part Number ^①	M. Torque Rating ^②	Rotorseal Size	Weight Mass ^③	Bore Range		D	D ₁	D ₂	D ₇	D ₉	D ₃₇	D ₃₈	H	No. Size ^④		X
					Min.	Max.									No.	Size	
					Min.	Max.											
11.5VC500	104298	6100	C2	208	76	102	730	146	324	178	70	276	239	518	2	1/4-18	406
14VC500	105435	8860	C2	287	89	121	699	146	322	146	70	279	226	626	2	1/2-14	406
16VC600	105436	14700	C2	363	108	127	802	165	386	165	70	314	249	676	2	1/2-14	471
20VC600	104299	21000	C2	468	121	152	827	178	386	178	70	309	246	778	2	1/2-14	471
24VC650	105437	30500	3/4 RH	656	133	191	871	191	405	191	70	319	246	892	2	1/2-14	490
28VC650	105438	41100	3/4 RH	792	146	216	897	203	405	203	70	324	251	994	2	1/2-14	490
33VC650	105439	57600	1RH	1122	165	229	975	241	405	241	70	350	279	1165	2	3/4-14	492
37VC650	105440	72300	1RH	1299	178	241	1000	254	405	254	70	361	284	1267	2	3/4-14	492
42VC650	105441	85900	1 1/4 RH	1557	191	267	1051	279	405	279	70	373	292	1394	2	3/4-14	492
SI		N m @ 5.2 bar	kg ^③		Dimensions in millimeters												

Airflex® VC Clutch Application

Form VC-508 Dual Narrow Series

Section B



Airflex® VC Clutch Application

Form VC-508 Dual Narrow Series

Section B

ENGLISH

Size	Basic B/M	Torque Rating (lb-ins) at 75 PSI	Weight (lbs)	Bore Range (inches)			
				Spider Min.	Spider Max.	Hub Min.	Hub Max.
11.5VC500	104610	54,000	393	3.000	4.000	3.000	4.000
14VC500	104611	78,400	559	3.500	4.750	3.500	4.750
16VC600	104612	130,000	800	4.250	6.000	4.250	5.000
20VC600	104613	186,000	1016	4.750	6.000	4.750	6.000
24VC650	104614	270,000	1413	5.250	7.500	5.250	7.500
28VC650	104615	364,000	1759	5.750	8.500	5.750	8.500
33VC650	104616	510,000	2488	6.500	9.000	6.500	9.000
37VC650	104617	640,000	2933	7.000	9.500	7.000	9.500
42VC650	104618	760,000	3407	7.500	10.500	7.500	10.500

SI

Size	Basic B/M	Torque Rating (N-m) at 5,2 bar	Mass (kg)	Bore Range (millimeters)			
				Spider Min.	Spider Max.	Hub Min.	Hub Max.
11.5VC500	104610	6,100	178	76	102	76	102
14VC500	104611	8,860	253	89	121	89	121
16VC600	104612	14,690	362	108	152	108	152
20VC600	104613	21,010	460	121	152	121	152
24VC650	104614	30,500	640	133	191	133	191
28VC650	104615	41,125	797	146	216	146	216
33VC650	104616	57,620	1127	165	229	165	229
37VC650	104617	72,310	1329	178	241	178	241
42VC650	104618	85,870	1543	191	267	191	267

ENGLISH

Size	(Dimensions in inches)										Clearance for Drop Out	
	D	D ₁	D ₂	D ₇	D ₃₇	D ₃₈	H	M	O	X	Element	Drum
11.5VC500	25.22	4.844	12.750	5.000	8.8	9.4	20.000	1	2	13.375	.27	.12
14VC500	24.69	5.500	12.688	5.750	9.2	8.9	24.000	1.438	½-14 NPT	13.438	.31	.19
16VC600	27.94	5.500	15.188	6.500	9.6	9.7	26.000	4.000	½-14 NPT	15.938	.31	.19
20VC600	29.94	7.000	15.188	7.000	10.2	9.7	30.000	5.000	½-14 NPT	15.938	.31	.19
24VC650	31.69	7.500	15.938	7.500	10.1	9.9	34.625	5.000	¾-14 NPT	16.688	.23	.19
28VC650	32.69	8.000	15.938	8.000	10.7	11.0	38.625	5.000	¾-14 NPT	16.688	.23	.19
33VC650	35.25	9.000	15.938	9.500	11.1	11.2	45.250	5.000	¾-14 NPT	16.750	.22	.19
37VC650	36.75	10.000	15.938	10.000	11.8	11.5	49.250	6.000	¾-14 NPT	16.750	.22	.19
42VC650	38.75	11.000	15.938	11.000	8.6	9.8	54.250	6.000	¾-14 NPT	16.750	.22	.19

SI

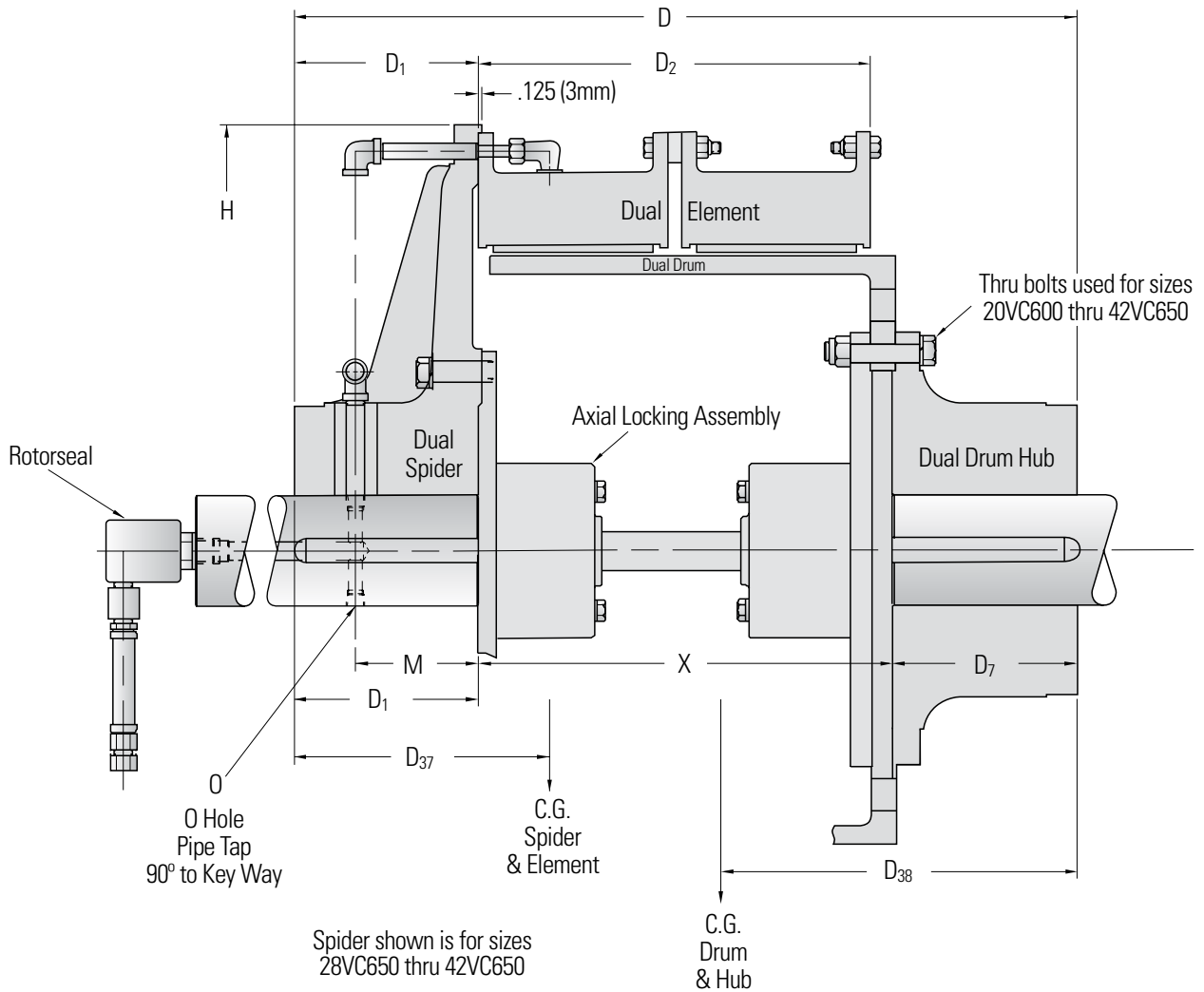
Size	(Dimensions in millimeters)										Clearance for Drop Out	
	D	D ₁	D ₂	D ₇	D ₃₇	D ₃₈	H	M	O	X	Element	Drum
11.5VC500	641	123	324	127	224	239	508	1	2	340	6,7	3,2
14VC500	627	140	322	146	234	226	610	37	½-14 NPT	341	7,9	4,8
16VC600	710	140	386	165	244	246	660	102	½-14 NPT	405	7,9	4,8
20VC600	760	178	386	178	259	246	762	127	½-14 NPT	405	7,9	4,8
24VC650	805	191	405	191	257	251	880	127	¾-14 NPT	424	5,9	4,8
28VC650	830	203	405	203	272	279	981	127	¾-14 NPT	424	5,9	4,8
33VC650	895	229	405	241	282	284	1149	127	¾-14 NPT	425	5,6	4,8
37VC650	933	254	405	254	300	292	1251	152	¾-14 NPT	425	5,6	4,8
42VC650	984	279	405	279	218	249	1378	152	¾-14 NPT	425	5,6	4,8

1 M(in)=0.268 (H/2-radius of bore) +0.34 M(mm)=0,268 (H/2-radius of bore) +8,7

2 Pipe tap not required. Thru hole diameter 0.44 in (11 mm).

Airflex® VC Clutch Application

Form VC508 (LA-7132) — Dual Narrow Series
with Axial Locking Assembly
Section B



Airflex® VC Clutch Application

Form VC508 (LA-7132) — Dual Narrow Series

with Axial Locking Assembly

Section B

ENGLISH				Bore Range (inches)			
Size	Basic B/M	Torque Rating (lb-ins) at 75 PSI	Weight (lbs)	Spider		Hub	
				Min.	Max.	Min.	Max.
20VC600	104620	186,000	1,126	4.750	6.000	4.750	6.000
24VC650	104621	270,000	1,539	5.250	7.500	5.250	7.500
28VC650	104622	364,000	1,949	5.750	8.500	5.750	8.500
33VC650	104623	510,000	2,655	6.500	9.000	6.500	9.000
37VC650	104624	640,000	3,135	7.000	9.500	7.000	9.500
42VC650	104625	760,000	3,677	7.500	10.500	7.500	10.500

SI				Bore Range (millimeters)			
Size	Basic B/M	Torque Rating (N-m) at 5,2 bar	Mass (kg)	Spider		Hub	
				Min.	Max.	Min.	Max.
20VC600	104620	21,010	511	121	152	121	152
24VC650	104621	30,500	698	133	191	133	191
28VC650	104622	41,120	884	146	216	146	216
33VC650	104623	57,620	1204	165	229	165	229
37VC650	104624	72,310	1422	178	241	178	241
42VC650	104625	85,870	1668	191	267	191	267

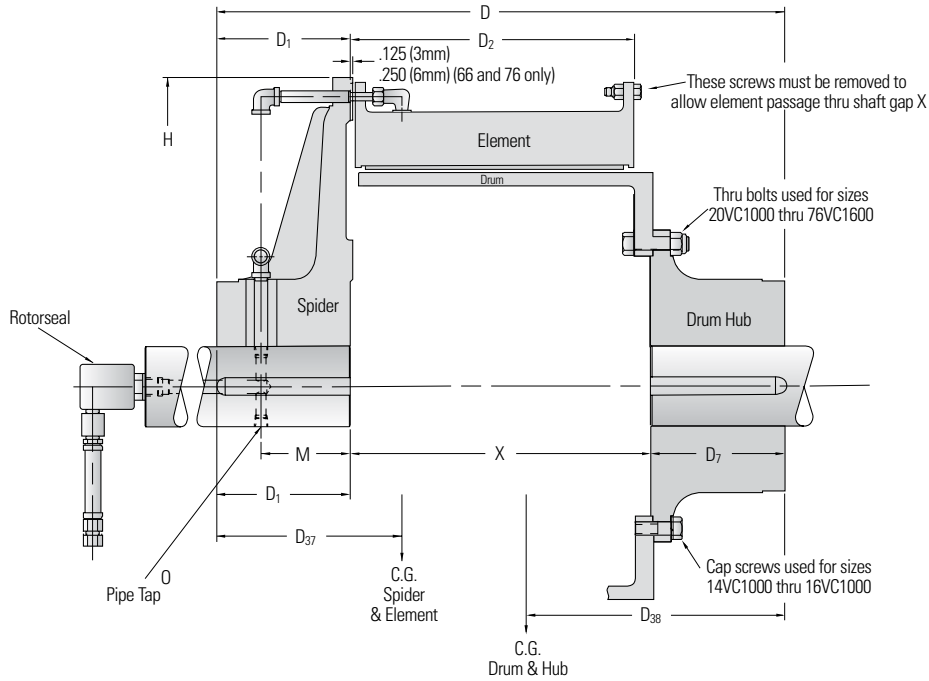
ENGLISH											Clearance for "Drop Out"		
Size	(Dimensions in inches)										Moving Shafts .250 Apart		Element
	D	D ₁	D ₂	D ₇	D ₃₇	D ₃₈	H	M	O	X	Locking Assembly and Drum		
20VC600	29.94	7.000	15.188	7.000	Consult Factory		30.000	5.000	½-14 NPT	15.938	.12		.56
24VC650	31.69	7.500	15.938	7.500	Consult Factory		34.625	5.000	¾-14 NPT	16.688	.12		.48
28VC650	32.69	8.000	15.938	8.000	Consult Factory		38.625	5.000	¾-14 NPT	16.688	.12		.48
33VC650	35.25	9.000	15.938	9.500	Consult Factory		45.250	5.000	¾-14 NPT	16.750	.12		.47
37VC650	36.75	10.000	15.938	10.000	Consult Factory		49.250	6.000	¾-14 NPT	16.750	.12		.47
42VC650	38.75	11.000	15.938	11.000	Consult Factory		54.250	6.000	¾-14 NPT	16.750	.12		.47

SI											Clearance for "Drop Out"		
Size	(Dimensions in millimeters)										Moving Shafts 6,35 Apart		Element
	D	D ₁	D ₂	D ₇	D ₃₇	D ₃₈	H	M	O	X	Locking Assembly and Drum		
20VC600	760	178	386	178	Consult Factory		762	127	½-14 NPT	405	3,2		14,2
24VC650	805	191	405	191	Consult Factory		880	127	¾-14 NPT	424	3,2		12,3
28VC650	830	203	405	203	Consult Factory		981	127	¾-14 NPT	424	3,2		12,3
33VC650	895	229	405	229	Consult Factory		1149	127	¾-14 NPT	425	3,2		11,9
37VC650	933	254	405	254	Consult Factory		1251	152	¾-14 NPT	425	3,2		11,9
42VC650	984	279	405	279	Consult Factory		1378	152	¾-14 NPT	425	3,2		11,9

Airflex® VC Clutch Application

Form VC-509 Single Wide Series

Section B



ENGLISH

Size	Basic B/M	Torque Rating (lb-ins) at 75 PSI	Weight (lbs)	Bore Range (inches)		Hub	
				Spider Min.	Max.	Min.	Max.
14VC1000	104979	85,000	610	3.625	5.000	3.625	5.000
16VC1000	104680	114,000	731	3.875	6.000	3.875	6.000
20VC1000	104681	161,000	896	4.500	6.250	4.500	6.250
24VC1000	104682	219,000	1,226	5.000	8.000	5.000	8.000
28VC1000	104683	296,000	1,577	5.500	8.500	5.500	8.500
32VC1000	104684	415,000	2,129	6.000	9.000	6.000	9.000
38VC1200	104685	680,000	2,759	7.250	9.250	7.250	9.250
42VC1200	104686	819,000	3,270	7.500	10.000	7.500	10.000
46VC1200	104687	950,000	4,026	8.000	10.000	8.000	10.000
52VC1200	104688	1,215,000	5,748	8.750	11.000	8.750	11.000
51VC1600	104689	1,610,000	6,920	9.500	12.500	9.500	12.500
60VC1600	104690	2,183,000	10,712	10.500	18.000	10.500	18.000
66VC1600	—	—	Consult Factory	—	—	—	—
76VC1600	—	—	Consult Factory	—	—	—	—

SI

Size	Basic B/M	Torque Rating (N-m) at 5,2 bar	Mass (kg)	Bore Range (millimeters)		Hub	
				Spider Min.	Max.	Min.	Max.
14VC1000	104979	9605	276	92	127	92	127
16VC1000	104680	12880	331	98	152	98	152
20VC1000	104681	18,190	406	114	159	114	159
24VC1000	104682	24,745	555	127	203	127	203
28VC1000	104683	33,445	714	140	216	140	216
32VC1000	104684	46,890	965	152	229	152	229
38VC1200	104685	76,830	1250	184	235	184	235
42VC1200	104686	92,535	1482	191	254	191	254
46VC1200	104687	107,335	1824	203	254	203	254
52VC1200	104688	137,275	2604	222	279	222	279
51VC1600	104689	181,905	3135	241	318	241	318
60VC1600	104690	246,645	4854	267	457	267	457
66VC1600	—	—	Consult Factory	—	—	—	—
76VC1600	—	—	Consult Factory	—	—	—	—

Airflex® VC Clutch Application

Form VC-509 Single Wide Series

Section B

ENGLISH

Size	D	(Dimensions in inches)					H	M	O	X	Clearance for "Drop Out"	
		D ₁	D ₂	D ₇	D ₃₇	D ₃₈					Element	Drum
14VC1000	24.38	5.500	11.562	7.000	7.0	8.8	24.000	4.000	¾-18 NPT	11.875	.19	.25
16VC1000	22.88	5.500	11.562	5.500	6.7	6.6	26.000	4.000	¾-18 NPT	11.875	.19	.25
20VC1000	25.88	7.000	11.562	7.000	7.5	8.1	30.000	5.000	¾-18 NPT	11.875	.19	.25
24VC1000	26.88	7.500	11.562	7.500	7.9	8.3	34.625	5.000	½-14 NPT	11.875	.19	.25
28VC1000	27.88	8.000	11.562	8.000	8.0	8.7	38.625	5.000	½-14 NPT	11.875	.19	.25
32VC1000	30.44	9.000	11.625	9.500	9.1	9.6	44.500	5.000	½-14 NPT	11.938	.19	.31
38VC1200	34.12	10.000	13.750	10.000	9.5	10.6	50.000	6.000	½-14 NPT	14.125	.25	.38
42VC1200	36.12	11.000	13.750	11.000	10.6	11.0	54.250	6.000	½-14 NPT	14.125	.25	.38
46VC1200	36.12	11.000	13.750	11.000	10.0	11.3	61.000	6.000	½-14 NPT	14.125	.25	.38
52VC1200	39.62	12.500	14.250	12.500	10.3	12.3	67.750	7.000	¾-14 NPT	14.625	.25	.62
51VC1600	48.88	15.000	18.250	15.000	13.9	14.3	67.750	7.000	¾-14 NPT	18.875	.50	.62
60VC1600	50.75	16.000	18.500	16.000	14.2	15.2	77.750	7.000	1"-11 ½ NPT	18.750	.12	.88

SI

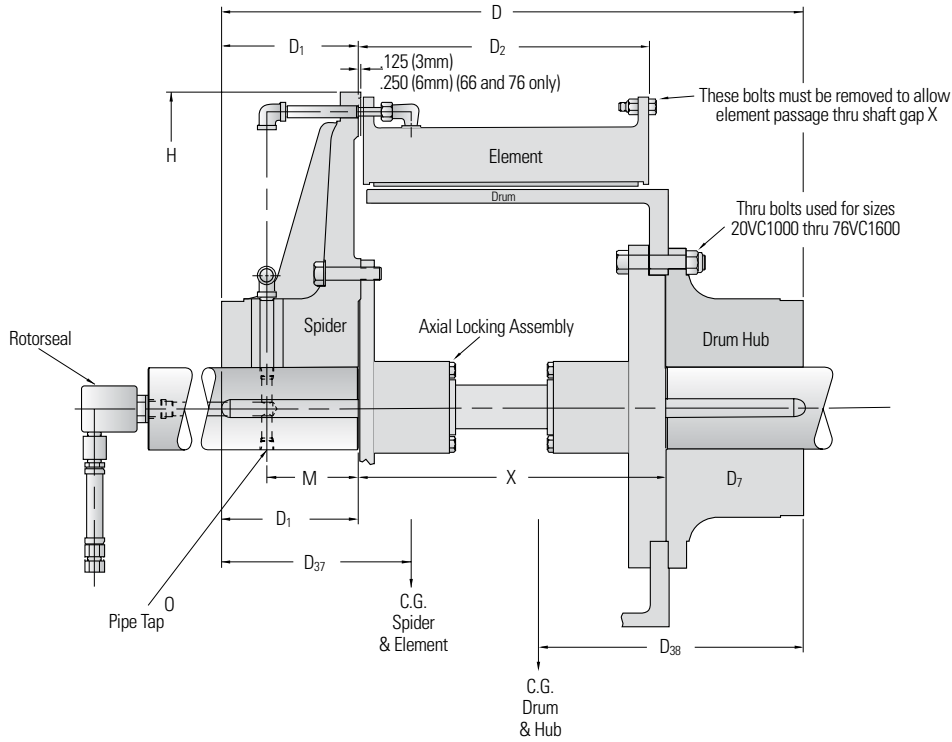
Size	D	(Dimensions in millimeters)					H	M	O	X	Clearance for "Drop Out"	
		D ₁	D ₂	D ₇	D ₃₇	D ₃₈					Element	Drum
14VC1000	619	140	294	178	178	224	610	102	¾-18 NPT	302	4,8	6,3
16VC1000	581	140	294	140	170	168	660	102	¾-18 NPT	302	4,8	6,3
20VC1000	657	178	294	178	191	206	762	127	¾-18 NPT	302	4,8	6,3
24VC1000	683	191	294	191	201	211	880	127	½-14 NPT	302	4,8	6,3
28VC1000	708	203	294	203	203	221	981	127	½-14 NPT	302	4,8	6,3
32VC1000	773	229	295	241	231	244	1130	127	½-14 NPT	303	4,8	7,9
38VC1200	867	254	349	254	241	269	1270	152	½-14 NPT	359	6,3	9,5
42VC1200	918	279	349	279	269	279	1378	152	½-14 NPT	359	6,3	9,5
46VC1200	918	279	349	279	254	287	1549	152	½-14 NPT	359	6,3	9,5
52VC1200	1007	318	362	318	262	312	1721	178	¾-14 NPT	372	6,3	15,9
51VC1600	1242	381	464	381	353	363	1721	178	¾-14 NPT	480	12,7	15,9
60VC1600	1289	406	470	406	361	386	1975	178	1"-11 ½ NPT	476	3,2	22,2

Airflex® VC Clutch Application

Form VC509 (LA-7134) — Single Wide Series

with Axial Locking Assembly

Section B



ENGLISH

Size	Basic B/M	Torque Rating (lb-ins) at 75 PSI	Weight (lbs)	Bore Range (inches)			
				Spider Min.	Max.	Hub Min.	Max.
20VC1000	104700	161,000	1,006	4.500	6.250	4.500	6.250
24VC1000	104701	219,000	1,345	5.000	8.000	5.000	8.000
28VC1000	104702	296,000	1,714	5.500	8.500	5.500	8.500
32VC1000	104703	415,000	2,279	6.000	9.000	6.000	9.000
38VC1200	104704	680,000	2,964	7.250	9.250	7.250	9.250
42VC1200	104705	819,000	3,506	7.500	10.000	7.500	10.000
46VC1200	104706	950,000	4,302	8.000	10.000	8.000	10.000
52VC1200	104707	1,215,000	5,997	8.750	11.000	8.750	11.000
51VC1600	104708	1,610,000	7,233	9.500	12.500	9.500	12.500
60VC1600	104709	2,183,000	11,315	10.500	18.000	10.500	18.000

SI

Size	Basic B/M	Torque Rating (N-m) at 5,2 bar	Spider Mass (kg)	Bore Range (millimeters)			
				Hub Min.	Max.	Min.	Max.
20VC1000	104700	18,190	456	114	159	114	159
24VC1000	104701	24,745	610	127	203	127	203
28VC1000	104702	33,445	777	140	216	140	216
32VC1000	104703	46,890	1034	152	229	152	229
38VC1200	104704	76,830	1344	184	235	184	235
42VC1200	104705	92,535	1590	191	254	191	254
46VC1200	104706	107,335	1951	203	254	203	254
52VC1200	104707	137,275	2217	222	279	222	279
51VC1600	104708	181,905	3227	241	318	241	318
60VC1600	104709	246,645	5127	267	457	267	457

Airflex® VC Clutch Application

Form VC509 (LA-7134) — Single Wide Series

with Axial Locking Assembly

Section B

ENGLISH

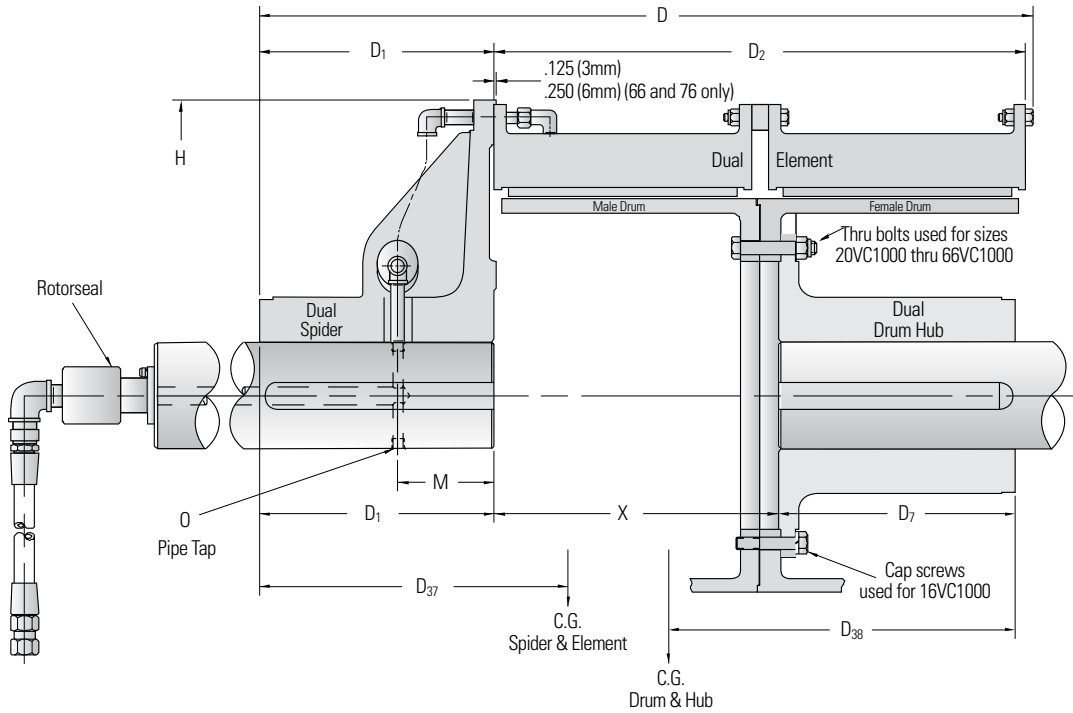
Size	(Dimensions in inches)						H	M	O	X	Clearance for "Drop Out" Moving Shafts .250 Apart Locking Assembly	Element
	D	D ₁	D ₂	D ₇	D ₃₇	D ₃₈						
20VC1000	25.88	7.000	11.562	7.000	Consult Factory	30.000	5.000	⅝-18 NPT	11.875	.12	.44	
24VC1000	26.88	7.500	11.562	7.500	Consult Factory	34.625	5.000	½-14 NPT	11.875	.12	.44	
28VC1000	27.88	8.000	11.562	8.000	Consult Factory	38.625	5.000	½-14 NPT	11.875	.12	.44	
32VC1000	30.44	9.000	11.625	9.500	Consult Factory	44.500	5.000	½-14 NPT	11.938	.12	.44	
38VC1200	34.12	10.000	13.750	10.000	Consult Factory	50.000	6.000	½-14 NPT	14.125	.12	.50	
42VC1200	36.12	11.000	13.750	11.000	Consult Factory	54.250	6.000	½-14 NPT	14.125	.12	.50	
46VC1200	36.12	11.000	13.750	11.000	Consult Factory	61.000	6.000	½-14 NPT	14.125	.12	.50	
52VC1200	39.62	12.500	14.250	12.500	Consult Factory	67.750	7.000	¾-14 NPT	14.625	.12	.50	
51VC1600	48.88	15.000	18.250	15.000	Consult Factory	67.750	7.000	¾-14 NPT	18.875	.12	.75	
60VC1600	50.75	16.000	18.500	16.000	Consult Factory	77.750	7.000	1"-11 ½ NPT	18.750	.12	.38	

Size	(Dimensions in millimeters)						H	M	O	X	Clearance for "Drop Out" Moving Shafts 6,35 Apart Locking Assembly	Element
	D	D ₁	D ₂	D ₇	D ₃₇	D ₃₈						
20VC1000	657	178	294	178	Consult Factory	762	127	⅝-18 NPT	302	3,1	11,1	
24VC1000	683	191	294	191	Consult Factory	880	127	½-14 NPT	302	3,1	11,1	
28VC1000	708	203	294	203	Consult Factory	981	127	½-14 NPT	302	3,1	11,1	
32VC1000	773	229	295	241	Consult Factory	1130	127	½-14 NPT	303	3,1	11,1	
38VC1200	867	254	349	254	Consult Factory	1270	152	½-14 NPT	359	3,1	12,7	
42VC1200	918	279	349	279	Consult Factory	1378	152	½-14 NPT	359	3,1	12,7	
46VC1200	918	279	349	279	Consult Factory	1549	152	½-14 NPT	359	3,1	12,7	
52VC1200	1007	318	362	318	Consult Factory	1721	178	¾-14 NPT	372	3,1	12,7	
51VC1600	1242	381	464	381	Consult Factory	1721	178	¾-14 NPT	480	3,1	19,1	
60VC1600	1289	406	470	406	Consult Factory	1975	178	1"-11 ½ NPT	476	3,1	9,5	

Airflex® VC Clutch Application

Form VC-510 Dual Wide Series

Section B



ENGLISH

Size	Basic B/M	Torque Rating (lb.-ins) at 75 PSI	Weight (lbs)	Bore Range (inches)			
				Spider Min.	Spider Max.	Hub Min.	Hub Max.
16VC1000	104720	228,000	1,085	5.000	6.000	5.000	6.000
20VC1000	104721	322,000	1,440	5.500	6.500	5.500	6.500
24VC1000	104722	438,000	1,910	6.250	7.250	6.250	7.250
28VC1000	104723	592,000	2,490	6.750	8.000	6.750	8.000
32VC1000	104724	830,000	3,510	7.750	10.500	7.750	10.500
38VC1200	104725	1,360,000	4,610	9.000	11.000	9.000	11.000
42VC1200	104726	1,638,000	5,920	9.500	11.750	9.500	11.750
46VC1200	104727	1,900,000	6,560	10.000	12.500	10.000	12.500
52VC1200	104728	2,430,000	8,715	10.750	14.000	10.750	14.000
51VC1600	104729	3,220,000	11,560	12.000	15.500	12.000	15.500
60VC1600	104730	4,366,000	17,675	13.250	20.000	13.250	20.000
66VC1600	Consult Factory	5,600,000	22,960	15.000	22.000	15.000	22.000
76VC1600	Consult Factory	7,320,000	27,450	16.250	24.000	16.250	24.000
76VC2000	Consult Factory	9,300,000	30,255	16.250	24.000	16.250	24.000

SI

Size	Basic B/M	Torque Rating (N·m) at 5,2 bar	Mass (kgs)	Bore Range (millimeters)			
				Spider Min.	Spider Max.	Hub Min.	Hub Max.
16VC1000	104720	25,760	492	127	152	127	152
20VC1000	104721	36,380	652	140	165	140	165
24VC1000	104722	49,490	865	159	184	159	184
28VC1000	104723	66,890	1,128	172	203	172	203
32VC1000	104724	93,780	1,590	197	267	197	267
38VC1200	104725	153,660	2,088	229	279	229	279
42VC1200	104726	185,070	2,682	241	299	241	299
46VC1200	104727	214,670	2,972	254	318	254	318
52VC1200	104728	274,550	3,948	273	356	273	356
51VC1600	104729	363,810	5,237	305	394	305	394
60VC1600	104730	493,290	8,007	337	508	337	508
66VC1600	Consult Factory	632,710	10,401	381	559	381	559
76VC1600	Consult Factory	827,050	12,438	413	610	413	610
76VC2000	Consult Factory	1,05,0759	13,723	413	610	413	610

Airflex® VC Clutch Application

Form VC-510 Dual Wide Series

Section B

ENGLISH

Size	D	D ₁	D ₂	D ₇	D ₃₇	D ₃₈	H	M	O	X	Clearance Element	Drop Out Drum
16VC1000	32.00	8.000	23.688	10.000	14.0	13.8	26.000	4.000	½-14 NPT	12.750	.19	.25
20VC1000	33.59	9.500	23.688	9.500	15.3	14.8	30.000	5.000	½-14 NPT	12.750	.19	.25
24VC1000	33.39	9.312	23.688	9.500	15.1	15.0	34.625	5.000	¾-14 NPT	12.750	.19	.25
28VC1000	34.08	10.000	23.688	10.000	14.5	15.3	38.625	5.000	¾-14 NPT	12.750	.19	.25
32VC1000	36.20	12.000	23.812	12.000	16.5	15.9	44.500	5.000	¾-14 NPT	12.812	.19	.31
38VC1200	41.53	13.000	28.062	13.000	17.0	18.0	50.000	6.000	¾-14 NPT	15.000	.25	.38
42VC1200	45.53	17.000	28.062	17.000	20.0	19.7	54.250	6.000	¾-14 NPT	15.125	.25	.38
46VC1200	45.61	17.000	28.062	17.000	20.3	20.8	61.000	6.000	¾-14 NPT	15.250	.25	.38
52VC1200	46.61	17.000	29.062	17.000	19.5	19.9	67.750	7.000	1"-11 ½ NPT	15.750	.25	.63
51VC1600	57.61	20.000	37.062	20.000	27.0	23.0	67.750	7.000	1"-11 ½ NPT	20.000	.50	.63
60VC1600	62.17	24.000	37.562	24.000	27.8	26.0	77.750	7.000	1¼-11 ½ NPT	20.375	.12	.88
66VC1600	70.00	CF	37.000	24.000	31.5	22.0	82.500	Consult Factory	1¼-11 ½ NPT	22.000	.25	.63
76VC1600	74.38	26.750	37.000	27.000	27.6	20.0	93.000	11.630	1¼-11 ½ NPT	20.370	.38	.88
76VC2000	78.39	26.750	27.000	24.020	30.8	20.7	93.000	11.630	1¼-11 ½ NPT	24.370	.38	.88

SI

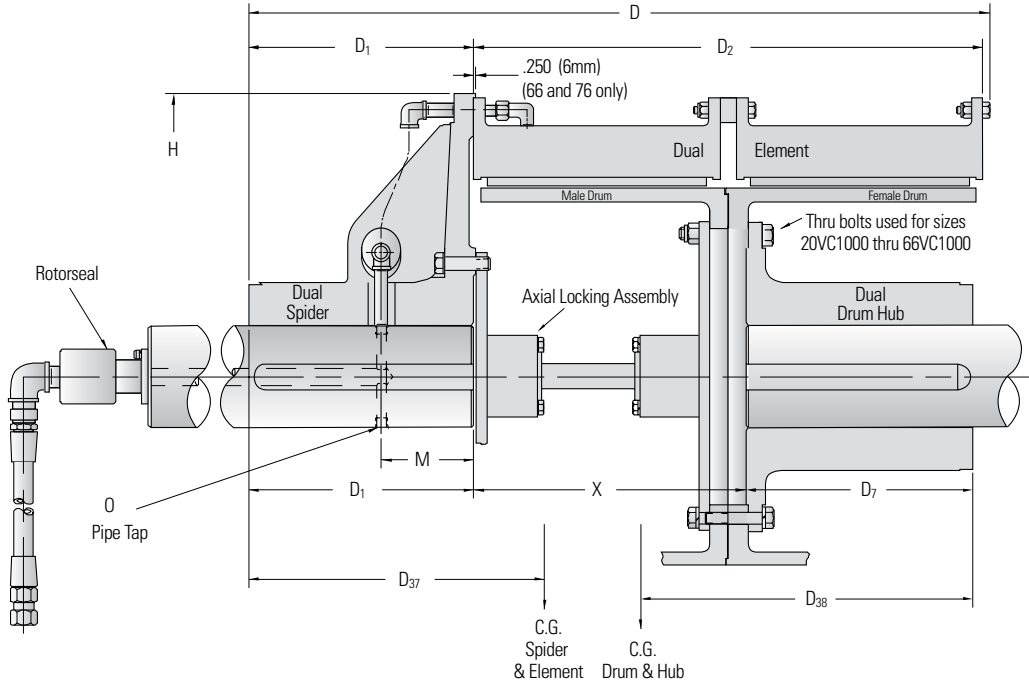
Size	D	D ₁	D ₂	D ₇	D ₃₇	D ₃₈	H	M	O	X	Clearance Element	Drop Out Drum
16VC1000	813	203	602	254	356	351	660	102	½-14 NPT	324	4,8	6,3
20VC1000	853	241	602	241	389	376	762	127	½-14 NPT	324	4,8	6,3
24VC1000	848	236	602	241	384	381	880	127	¾-14 NPT	324	4,8	6,3
28VC1000	866	254	602	254	368	389	981	127	¾-14 NPT	324	4,8	6,3
32VC1000	919	305	605	305	419	404	1130	127	¾-14 NPT	325	4,8	7,9
38VC1200	1055	330	713	330	432	457	1270	152	¾-14 NPT	381	6,3	9,5
42VC1200	1156	432	713	432	508	500	1378	152	¾-14 NPT	384	6,3	9,5
46VC1200	1158	432	713	432	516	528	1549	152	¾-14 NPT	387	6,3	9,5
52VC1200	1184	432	738	432	495	505	1721	178	1"-11 ½ NPT	400	6,3	15,9
51VC1600	1463	508	941	508	686	584	1721	178	1"-11 ½ NPT	508	12,7	15,9
60VC1600	1579	610	954	610	706	660	1975	178	1¼-11 ½ NPT	518	3,2	22,2
66VC1600	1778	610	940	610	800	559	2096	229	1¼-11 ½ NPT	559	6,3	15,9
76VC1600	1889	680	940	686	701	508	2362	296	1¼-11 ½ NPT	517	9,5	22,2
76VC2000	1991	680	1143	686	782	526	2362	295	1¼-11 ½ NPT	619	9,5	22,2

Airflex® VC Clutch Application

Form VC510 (LA-7136) — Dual Wide Series

with Axial Locking Assembly

Section B



ENGLISH

Size	Basic B/M	Torque Rating (lb-ins) at 75 PSI	Weight (lbs)	Bore Range (inches)			
				Spider Min.	Spider Max.	Hub Min.	Hub Max.
20VC1000	104740	322,000	1,577	5.500	6.500	5.500	6.500
24VC1000	104741	438,000	2,071	6.250	7.250	6.250	7.250
28VC1000	104742	592,000	2,641	6.750	8.000	6.750	8.000
32VC1000	104743	830,000	3,775	7.750	10.500	7.750	10.500
38VC1200	104744	1,360,000	4,790	9.000	11.000	9.000	11.000
42VC1200	104745	1,638,000	6,095	9.500	11.750	9.500	11.750
46VC1200	104746	1,900,000	6,754	10.000	12.500	10.000	12.500
52VC1200	104747	2,430,000	9,178	10.750	14.000	10.750	14.000
51VC1600	104748	3,220,000	12,095	12.000	15.500	12.000	15.500
60VC1600	104749	4,366,000	18,855	13.250	20.000	13.250	20.000
66VC1600	108002	5,600,000	23,054	15.000	22.000	15.000	22.000
76VC1600	108082	7,320,000	27,750	16.250	24.000	16.250	24.000
76VC2000	108120	9,300,000	30,565	16.250	24.000	16.250	24.000

SI

Size	Basic B/M	Torque Rating (N-m) at 5,2 bar	Mass (kgs)	Bore Range (millimeters)			
				Spider Min.	Spider Max.	Hub Min.	Hub Max.
20VC1000	104740	36,380	715	140	165	140	165
24VC1000	104741	49,490	939	159	184	159	184
28VC1000	104742	66,890	1198	172	203	172	203
32VC1000	104743	93,780	1710	197	267	197	267
38VC1200	104744	153,660	2170	229	279	229	279
42VC1200	104745	185,070	2762	241	299	241	299
46VC1200	104746	214,670	3060	254	318	254	318
52VC1200	104747	274,550	4158	273	356	273	356
51VC1600	104748	363,810	5480	305	394	305	394
60VC1600	104749	493,290	8543	337	508	337	508
66VC1600	106972	632,710	10445	381	559	381	559
76VC1600	108082	827,050	12574	413	610	413	610
76VC2000	108120	1,050,760	13,864	413	610	413	610

Airflex® VC Clutch Application

Form VC510 (LA-7136) — Dual Wide Series

with Axial Locking Assembly

Section B

ENGLISH

Size	(Dimensions in inches)							M	O	X	Clearance for "Drop Out" Moving Shafts .250 Apart Drum & Locking Assembly	Element
	D	D ₁	D ₂	D ₇	D ₃₇	D ₃₈	H					
20VC1000	33.59	9.500	23.688	9.500	15.0	10.9	30.000	5.000	½-14 NPT	12.750	.12	.44
24VC1000	33.39	9.312	23.688	9.500	15.7	10.5	34.625	5.000	¾-14 NPT	12.750	.12	.44
28VC1000	34.08	10.000	23.688	10.000	15.4	10.9	38.625	5.000	¾-14 NPT	12.750	.12	.44
32VC1000	36.20	12.000	23.812	12.000	17.1	12.0	44.500	5.000	¾-14 NPT	12.812	.12	.44
38VC1200	41.53	13.000	28.062	13.000	18.2	12.6	50.000	6.000	¾-14 NPT	15.000	.12	.50
42VC1200	45.53	17.000	28.062	17.000	21.6	15.1	54.250	6.000	¾-14 NPT	15.125	.12	.50
46VC1200	45.61	17.000	28.062	17.000	21.7	15.6	61.000	6.000	¾-14 NPT	15.250	.12	.50
52VC1200	46.61	17.000	29.062	17.000	20.9	15.1	67.750	7.000	1"-11 ½ NPT	15.750	.12	.50
51VC1600	57.61	20.000	37.062	20.000	26.4	15.7	67.750	7.000	1"-11 ½ NPT	20.000	.12	.75
60VC1600	62.17	24.000	37.562	24.000	28.5	20.8	77.750	7.000	1¼-11 ½ NPT	20.375	.12	1.00
66VC1600	70.00	Consult Factory	37.000	24.000	28.0	19.2	82.500	Consult Factory	1¼-11 ½ NPT	22.000	.25	.88
76VC1600	74.39	26.750	37.000	27.000	27.6	20.5	93.000	11.630	1¼-11 ⅝ NPT	20.370	.25	1.00
76VC2000	78.39	26.75	45.000	27.000	30.8	21.2	93.500	11.630	1¼-11 ½ NPT	24.370	.25	1.00

SI

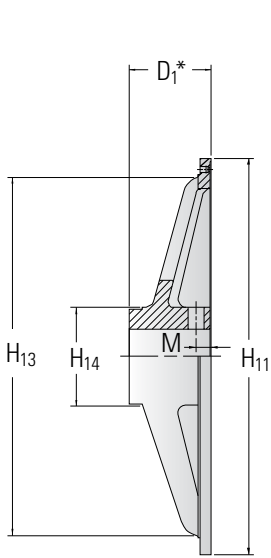
Size	(Dimensions in millimeters)							M	O	X	Clearance for "Drop Out" Moving Shafts 6,35 Apart Drum & Locking Assembly	Element
	D	D ₁	D ₂	D ₇	D ₃₇	D ₃₈	H					
20VC1000	853	241	602	241	381	277	762	127	½-14 NPT	324	3,2	11,1
24VC1000	848	236	602	241	399	267	880	127	¾-14 NPT	324	3,2	11,1
28VC1000	866	254	602	254	391	277	981	127	¾-14 NPT	324	3,2	11,1
32VC1000	919	305	605	305	434	305	1130	127	¾-14 NPT	325	3,2	11,1
38VC1200	1055	330	713	330	462	320	1270	152	¾-14 NPT	381	3,2	12,7
42VC1200	1156	432	713	432	549	384	1378	152	¾-14 NPT	384	3,2	12,7
46VC1200	1158	432	713	432	551	396	1549	152	¾-14 NPT	387	3,2	12,7
52VC1200	1184	432	738	432	531	384	1721	178	1"-11 ½ NPT	400	3,2	12,7
51VC1600	1463	508	941	508	671	399	1721	178	1"-11 ½ NPT	508	3,2	19,0
60VC1600	1579	610	954	610	724	528	1975	178	1¼-11 ½ NPT	518	3,2	25,4
66VC1600	1778	Consult Factory	940	610	711	488	2096	Consult Factory	1¼-11 ½ NPT	559	6,3	22,2
76VC1600	1889	680	940	686	701	521	2362	296	1¼-11 ⅝ NPT	517	6,3	25,4
76VC2000	1991	680	1143	686	782	539	2362	295	1¼-11 ½ NPT	619	6,3	25,4

Airflex® VC Mounting Components

Form VC-521 Spiders — Single Narrow Sizes

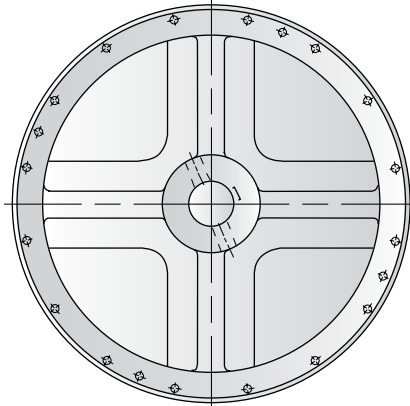
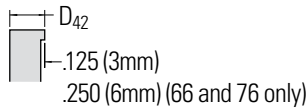
— Dimensional and Technical Data

Section B

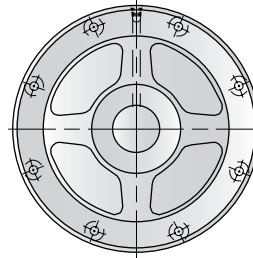


*D₁ is measured between the machined surfaces of the hub and spidered rim.

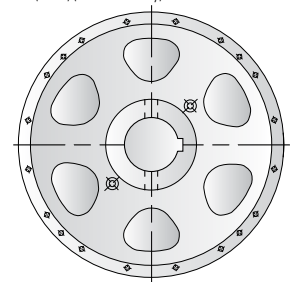
Spider shown is for sizes 14 thru 24



Sizes 14 thru 24



Size 11.5



Sizes 28 thru 42

Spider Web Configurations

ENGLISH

Size	Part Number	Weight (lb)	Wk ² (lb-ft ²)	D ₁	(Dimensions in inches)				
					D ₄₂	H ₁₁	H ₁₃	H ₁₄	
11.5VC500	408376	70	19	4.34	0.59	20.00	N/A	6.00	
14VC500	411170	102	35	5.50	1.06	24.00	21.25	8.00	
16VC600	408277	139	50	5.50	1.06	26.00	23.25	8.00	
20VC600	408279	224	122	6.00	1.06	30.00	27.00	8.50	
24VC650	408281	260	174	6.50	1.06	34.63	31.00	9.00	
28VC650	505480	514	534	8.00	1.13	38.63	35.25	11.50	
33VC650	505285	716	811	9.00	1.13	45.25	41.00	13.50	
37VC650	505275	940	1404	10.00	1.25	49.25	45.50	13.50	
42VC650	502369	1284	2106	11.00	1.31	54.25	50.48	16.50	

SI

Size	Part Number	Mass (kg)	J (kg-m ²)	D ₁	(Dimensions in millimeters)				
					D ₄₂	H ₁₁	H ₁₃	H ₁₄	
11.5VC500	408376	32	0,80	110	15	508	N/A	152	
14VC500	411170	46	1,47	140	27	610	540	203	
16VC600	408277	63	2,10	140	27	660	591	203	
20VC600	408279	101	5,12	152	27	762	686	216	
24VC650	408281	118	7,31	165	27	880	787	229	
28VC650	505480	233	22,43	203	29	981	895	292	
33VC650	505285	324	34,06	229	29	1149	1041	343	
37VC650	505275	426	58,97	254	32	1251	1156	343	
42VC650	502369	582	88,45	279	33	1378	1282	419	

Notes:

Refer to VC Spider Piping and Configuration catalog page for other sizes.

For size 11.5, part number for two air passages.
Part number for single air passage - 408375.

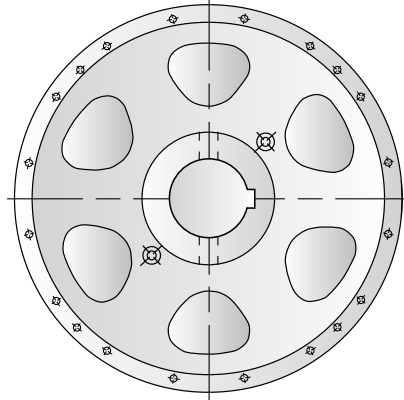
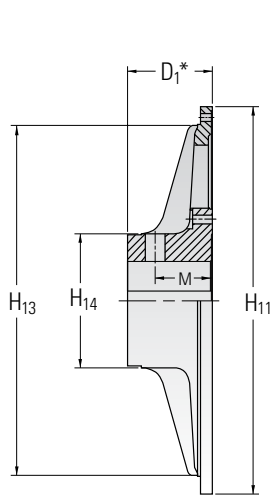
Table data based upon minimum bore.

Airflex® VC Mounting Components

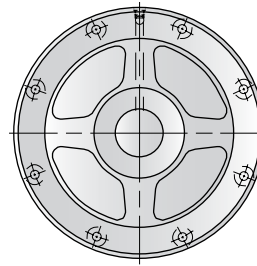
Form VC-522 Spiders — Single Narrow Sizes

— Dimensional and Technical Data

Section B

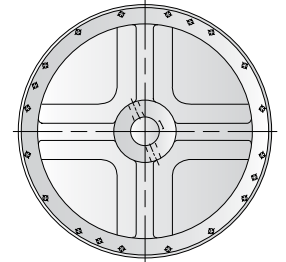


Sizes 16 thru 42



Size 11.5

Spider Web Configurations



Size 14

*D₁ is measured between the machined surfaces of the hub and spidered rim.

Spider shown is for sizes 20 thru 24 **1**

ENGLISH

Size	Part Number	Weight (lb)	Wk ² (lb-ft ²)	D ₁	(Dimensions in inches)				
					D ₄₂	H ₁₁	H ₁₃	H ₁₄	
11.5VC500	410856	71	19	4.84	0.62	20.00	N/A	7.50	
14VC500	411170	102	35	5.50	1.06	24.00	21.25	8.00	
16VC600	505283	236	111	5.50	1.50	26.00	23.00	10.00	
20VC600	509698	295	167	7.00	1.13	30.00	27.00	10.00	
24VC850	509699	408	285	7.75	1.13	34.63	31.50	12.00	
28VC650	509700	554	474	8.00	1.13	38.63	35.25	14.00	
33VC650	509701	802	965	9.00	1.13	45.25	41.00	15.00	
37VC650	509702	981	1356	10.00	1.25	49.25	45.50	15.50	
42VC650	509703	1116	1868	11.00	1.31	54.25	50.50	16.50	

SI

Size	Part Number	Mass (kg)	J (kg-m ²)	D ₁	(Dimensions in millimeters)				
					D ₄₂	H ₁₁	H ₁₃	H ₁₄	
11,5VC500	410856	32	0,80	122,9	15,8	508,0	N/A	190,5	
14VC500	411170	46	1,47	139,7	26,9	609,6	539,7	203,2	
16VC600	505283	107	4,66	139,7	38,1	660,4	584,2	254,0	
20VC600	509698	134	7,01	177,8	28,7	762,0	685,8	254,0	
24VC650	509699	185	11,97	196,9	28,7	879,6	800,1	304,9	
28VC650	509700	251	19,91	203,2	28,7	981,2	895,3	355,6	
33VC650	509701	363	40,53	228,6	28,7	1149,4	1041,0	381,0	
37VC650	509702	444	56,95	254,0	31,8	1251,0	1155,0	388,7	
42VC650	509703	506	78,46	279,4	33,3	1378,0	1282,0	419,1	

Notes:

1 Refer to VC Spider Piping and Configuration catalog page for other sizes.

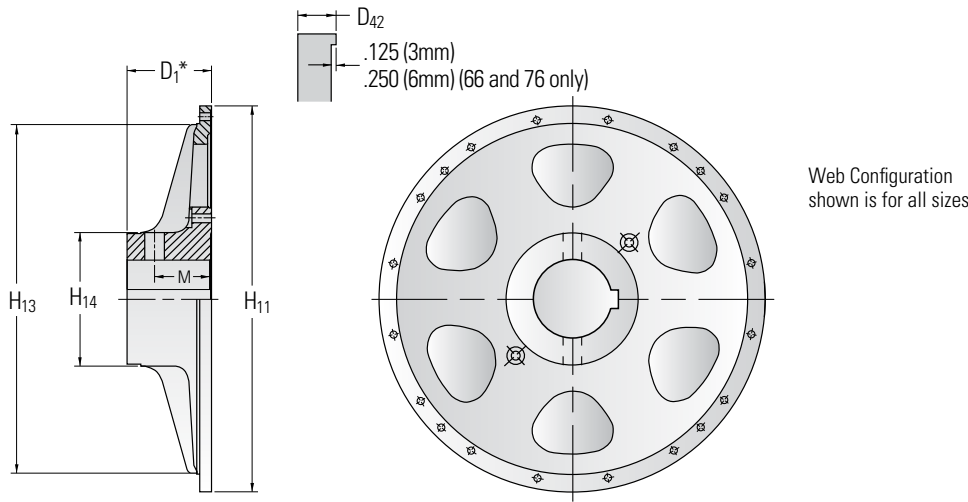
Table data based upon minimum bore.

Airflex® VC Mounting Components

Form VC-523 Spiders — Single Wide Sizes

— Dimensional and Technical Data

Section B



*D₁ is measured between the machined surfaces of the hub and spidered rim.

Spider shown is for sizes 20 thru 24 **1**

ENGLISH

Size	Part Number	Weight (lb)	Wk ² (lb-ft ²)	D ₁	(Dimensions in inches)			
					D ₄₂	H ₁₁	H ₁₃	H ₁₄
14VC1000	508545	205	79	5.50	1.13	24.00	21.00	8.00
16VC1000	505283	236	111	5.50	1.50	26.00	23.00	10.00
20VC1000	509698	295	167	7.00	1.13	30.00	27.00	10.00
24VC1000	509699	408	285	7.75	1.13	34.63	31.50	12.00
28VC1000	509700	554	474	8.00	1.13	38.63	35.25	14.00
32VC1000	509706	727	781	9.00	1.13	44.50	41.00	15.00
38VC1200	509707	1002	1502	10.00	1.25	50.00	45.50	15.50
42VC1200	509703	1116	1868	11.00	1.31	54.25	50.50	16.50
46VC1200	509708	1504	2968	11.00	1.50	61.00	56.50	17.00
52VC1200	509709	2579	5087	12.50	1.69	67.75	63.25	23.00
51VC1600	509710	2621	6706	15.00	1.69	67.75	63.25	20.00
60VC1600	509711	4096	13346	16.00	1.88	77.75	72.00	26.00

SI

Size	Part Number	Mass (kg)	J (kg-m ²)	D ₁	(Dimensions in millimeters)			
					D ₄₂	H ₁₁	H ₁₃	H ₁₄
14VC1000	508545	93	3,32	140	29	610	533	203
16VC1000	505283	107	4,66	140	38	660	584	254
20VC1000	509698	134	7,01	178	29	762	686	254
24VC1000	509699	185	11,97	197	29	880	800	305
28VC1000	509700	251	19,91	203	29	981	895	356
32VC1000	509706	329	32,80	229	29	1130	1041	381
38VC1200	509707	454	63,08	254	32	1270	1156	394
42VC1200	509703	506	78,46	279	33	1378	1283	419
46VC1200	509708	681	124,7	279	38	1549	1435	432
52VC1200	509709	1168	213,7	318	43	1721	1607	584
51VC1600	509710	1187	281,7	381	43	1721	1607	508
60VC1600	509711	1855	560,5	406	48	1975	1829	660

Notes:

1 Refer to VC Spider Piping and Configuration catalog page for other sizes.

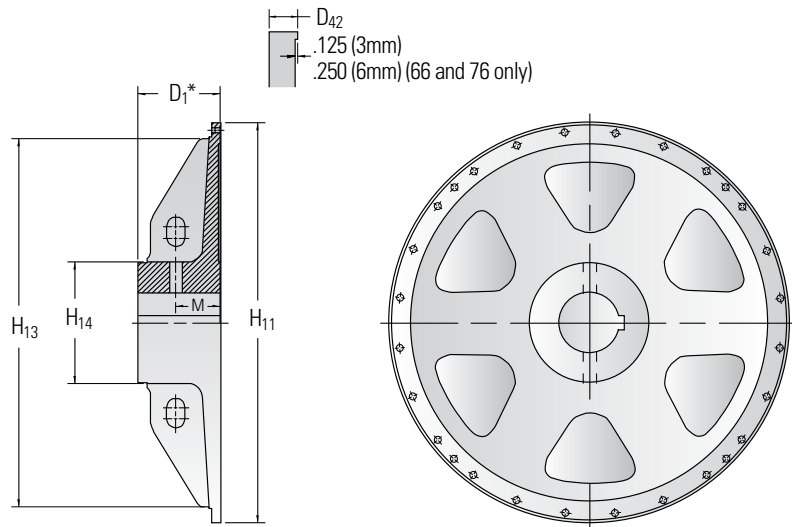
Table data based upon minimum bore.

Airflex® VC Mounting Components

Form VC-524 Spiders — Dual Wide Sizes

— Dimensional and Technical Data

Section B



Web Configuration shown is for all sizes

*D₁ is measured between the machined surfaces of the hub and spidered rim.

Spider shown is for sizes 20 thru 24

ENGLISH

Size	Part Number	Weight (lb)	Wk ² (lb-ft ²)	(Dimensions in inches)				
				D ₁	D ₄₂	H ₁₁	H ₁₃	H ₁₄
16VC1000	505284	264	113	8.00	1.50	26.00	23.00	10.00
20VC1000	509693	333	197	9.50	1.13	30.00	27.00	11.00
24VC1000	509694	442	312	9.31	1.13	34.63	31.50	12.50
28VC1000	509695	680	597	10.00	1.13	38.63	35.25	14.00
32VC1000	509696	967	932	12.00	1.13	44.50	41.00	16.75
38VC1200	509646	1350	1625	13.00	1.25	50.00	45.50	18.50
42VC1200	509647	1763	2445	17.00	1.31	54.25	50.50	19.00
46VC1200	509691	1855	3577	17.00	1.44	61.00	56.50	20.00
52VC1200	509648	2854	5277	17.00	1.69	67.75	63.25	23.00
51VC1600	509649	3639	7611	20.00	1.69	67.75	63.25	25.00
60VC1600	509692	5402	14489	24.00	1.88	77.75	72.00	30.00
66VC1600	514261	7385	Consult Factory	25.63	1.88	82.50	76.00	34.50
76VC1600	515152	9245	32860	27.00	1.88	93.00	86.00	38.50
76VC2000	515152	9245	32860	27.00	1.88	93.00	86.00	38.50

SI

Size	Part Number	Mass (kg)	J (kg-m ²)	(Dimensions in millimeters)				
				D ₁	D ₄₂	H ₁₁	H ₁₃	H ₁₄
16VC1000	505284	120	4,75	203	38	660	594	254
20VC1000	509693	151	8,27	241	29	762	686	279
24VC1000	509694	200	13,10	236	29	880	800	318
28VC1000	509695	306	25,07	254	29	981	895	356
32VC1000	509696	438	39,14	305	29	1130	1041	425
38VC1200	509646	612	68,25	330	32	1270	1156	470
42VC1200	509647	799	102,7	432	33	1378	1283	483
46VC1200	509691	840	150,2	432	37	1549	1435	508
52VC1200	509648	1293	221,6	432	43	1721	1607	584
51VC1600	509649	1648	319,7	508	43	1721	1607	635
60VC1600	509692	2447	608,5	610	48	1975	1829	762
66VC1600	514261	3349	CF	651	48	2096	1930	876
76VC1600	515152	4194	1380	686	48	2362	2184	978
76VC2000	515152	4194	1380	686	48	2362	2184	978

Notes:

Refer to VC Spider Piping and Configuration catalog page for other sizes.

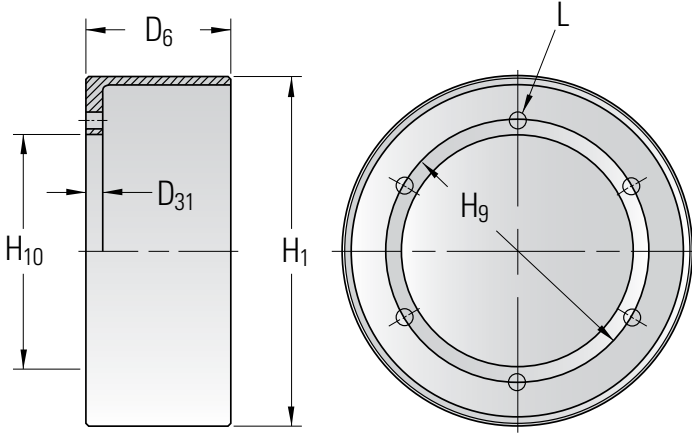
Table data based upon minimum bore.

Airflex® VC Mounting Components

Form VC-528 — Internal Flange Drums — Narrow Sizes

— Dimensional and Technical Data

Section B



Size	Drum Part Numbers Single Elements		Dual Elements	
	Thru Holes	Tapped Holes	Thru Holes	Tapped Holes
11.5VC500	408290	408291	408306	408307
14VC500	408283	408284	408308	408309
16VC600	408292	408293	408310	408311
20VC600	408294	408295	408312	408313
24VC850	408296	408297	408314	411828
28VC650	409479	408299	408316	408317
33VC650	408300	408301	408318	408319
37VC650	408302	408303	408320	408321
42VC650	408304	408305	408322	408323

ENGLISH

D_{31}	(Dimensions in inches)				L Holes Tapped	L Holes No.	Single Drum D_6	Weight (lb)	Wk ² (lb-ft ²)	Wk ² No.	L Holes (In)	D_6 (lb)	Dual Drum Weight (lb-ft ²)	Size Wk ²
	H_1	H_9	H_{10}	Thru										
11.5VC500	0.75	11.5	7.250	6.250	0.53	1/2-13	6	6.50	46	9	12	13.13	83	16
14VC500	0.75	14	9.250	8.250	0.53	1/2-13	12	6.50	66	19	12	13.13	139	40
16VC600	0.75	16	9.625	8.250	0.78	3/4-10	8	7.75	94	35	8	15.63	175	66
20VC600	1.00	20	12.000	10.500	0.78	3/4-10	12	7.75	139	78	12	15.63	234	136
24VC850	1.00	24	16.000	14.625	0.78	3/4-10	12	8.25	178	148	16	16.38	293	258
28VC650	1.00	28	20.000	18.500	0.78	3/4-10	16	8.25	231	269	16	16.38	346	472
33VC650	1.00	33	21.500	19.500	0.78	3/4-10	14	8.25	312	486	24	16.44	507	827
37VC650	1.00	37	27.000	25.000	0.78	3/4-10	18	8.25	340	691	32	16.44	553	1172
42VC650	1.13	42	31.000	29.000	0.78	3/4-10	20	8.25	424	1100	36	16.44	662	1809

SI

D_{31}	(Dimensions in millimeters)				L Holes Tapped	L Holes No.	Single Drum D_6	Mass (kg)	Wk ² (kg-m ²)	Wk ² No.	L Holes (mm)	D_6 (kg)	Dual Drum Mass (kg-m ²)	Size Wk ²
	H_1	H_9	H_{10}	Thru										
11.5VC500	19	292	184,2	158,8	13	1/2-13	6	165	21	0,38	12	333	38	0,67
14VC500	19	356	235,0	209,6	13	1/2-13	12	165	30	0,80	12	333	63	1,68
16VC600	19	406	244,5	209,6	20	3/4-10	8	197	43	1,47	8	397	79	2,77
20VC600	25	509	304,8	266,7	20	3/4-10	12	197	63	3,28	12	397	106	5,80
24VC650	25	610	406,4	371,5	20	3/4-10	12	210	81	6,22	16	416	133	10,84
28VC650	25	711	508,0	469,9	20	3/4-10	16	210	105	11,30	16	416	158	19,82
33VC650	25	838	546,1	495,3	20	3/4-10	14	210	141	20,41	24	418	230	34,73
37VC650	25	940	685,8	635,0	20	3/4-10	18	210	154	29,02	32	418	251	49,22
42VC650	29	1067	787,4	736,6	20	3/4-10	20	210	192	46,20	36	418	300	75,98

Notes:

Tolerance (H_1)
+0.000/-0.010 in
(+0,00/-0,25 mm)

Tolerance (H_{10})
+0.003/-0.010 in
(+0,08/-0,00 mm)

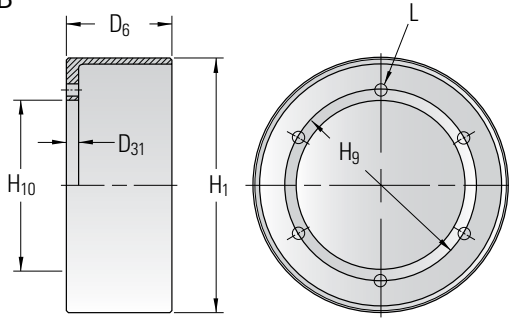
Tapped L Holes meet
American National Standards
for United Screw Threads.

Airflex® VC Mounting Components

Form VC-528 — Internal Flange Drums — Wide Sizes

— Dimensional and Technical Data

Section B



Size	Drum Part Numbers Having		Size	Drum Part Numbers Having	
	Male Register	Female Register		Male Register	Female Register
14VC1000	411111	N/A	42VC1200	409947	409948
16VC1000	409506	410320	46VC1200	409980	409981
20VC1000	410087	410088	52VC1200	409715	409716
24VC1000	409794	409795	51VC1600	409711	409712
28VC1000	409537	409538	60VC1600	411501	411502
32VC1000	410824	410825	66VC1600	413727	413726
38VC1200	409474	409475	76VC1600	515149	515150
			76VC2000	515382	515383

ENGLISH

Size	(Dimensions in inches)				L Holes No	L Holes Size	D ₃₁ (in)	Male Register Drums			Female Register Drums	
	D ₆	H ₁	H ₉	H ₁₀				Weight (lb)	Wk ² (lb-ft ²)	D ₃₁ (in)	Weight (lb)	Wk ² (lb-ft ²)
14VC1000	11.50	14	9.250	8.250	12	½-13 NC	0.88	122	35	N/A	N/A	N/A
16VC1000	11.50	16	11.500	10.000	See Notes	0.78	1.00	130	38	0.88	94	37
20VC1000	11.50	20	15.000	13.500	See Notes	0.78	1.00	169	112	0.88	164	109
24VC1000	11.50	24	16.000	14.625	See Notes	0.78	1.00	225	192	0.88	215	186
28VC1000	11.50	28	20.000	18.500	See Notes	0.78	1.00	295	350	0.88	282	338
32VC1000	11.50	32	21.000	19.000	See Notes	0.78	1.00	371	559	0.88	352	537
38VC1200	13.63	38	27.000	25.000	See Notes	0.78	1.00	552	1214	0.88	530	1173
42VC1200	13.63	42	31.000	29.000	See Notes	0.78	1.13	582	1567	1.00	550	1510
46VC1200	13.63	46	34.500	32.500	See Notes	1.03	1.25	729	2357	1.13	700	2276
52VC1200	13.88	52	40.000	38.000	See Notes	1.06	1.25	852	3552	1.13	820	3425
51VC1600	18.13	51	40.000	38.000	See Notes	1.06	1.25	890	4145	1.13	860	4035
60VC1600	17.75	60	46.000	42.000	24	1.56	1.75	1640	8810	1.63	1590	8575
66VC1600	18.25	66	48.000	44.000	See Notes	1.56	1.75	1905	15070	1.50	1770	14340
76VC1600	18.25	76	58.000	54.000	See Notes	1.56	1.75	2230	19861	1.50	2060	18542
76VC2000	22.25	76	58.000	54.000	See Notes	1.56	1.75	2780	25000	1.50	2640	23900

SI

Size	(Dimensions in millimeters)				L Holes No	L Holes Size	D ₃₁ (mm)	Male Register Drums			Female Register Drums	
	D ₆	H ₁	H ₉	H ₁₀				Weight (kg)	Wk ² (kg-m ²)	D ₃₁ (mm)	Weight (kg)	Wk ² (kg-m ²)
14VC1000	292	356	235,0	209,6	12	½-13 NC	22	55	1,47	N/A	N/A	N/A
16VC1000	292	406	292,1	254,0	See Notes	20	25	59	1,60	22	43	1,55
20VC1000	292	508	381,0	342,9	See Notes	20	25	77	4,70	22	74	4,58
24VC1000	292	610	406,4	371,5	See Notes	20	25	102	8,06	22	97	7,81
28VC1000	292	711	508,0	469,9	See Notes	20	25	134	14,70	22	128	14,20
32VC1000	292	813	533,4	482,6	See Notes	20	25	168	23,48	22	159	22,55
38VC1200	346	965	685,8	635,0	See Notes	20	25	250	50,99	22	240	49,27
42VC1200	346	1067	787,4	736,6	See Notes	20	29	264	65,81	25	249	63,42
46VC1200	346	1168	876,3	825,5	See Notes	26	32	330	98,99	29	317	95,59
52VC1200	353	1321	1016,0	965,2	See Notes	27	32	386	149,2	29	371	143,9
51VC1600	461	1295	1016,0	965,2	See Notes	27	32	403	174,1	29	390	169,5
60VC1600	451	1524	1168,4	1066,8	24	40	44	743	370,0	41	720	360,2
66VC1600	464	1676	1219,2	1117,6	See Notes	40	44	863	632,9	38	802	602,3
76VC1600	464	1930	1473,2	1371,6	See Notes	40	44	1011	837,0	38	934	781,0
76VC2000	565	1930	1473,2	1371,6	See Notes	40	44	1264	1050	38	1200	1005

Notes:

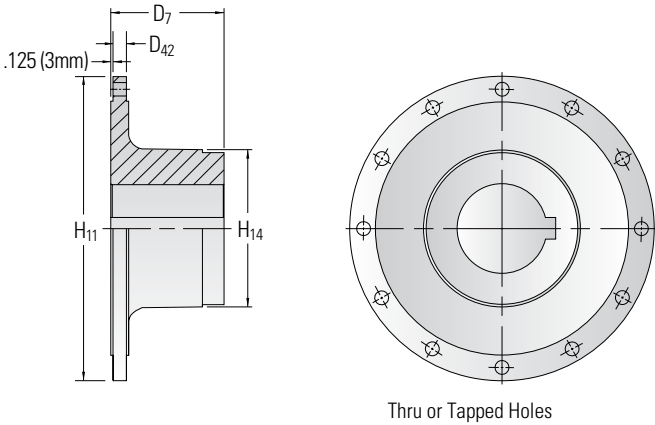
	(+0,00/-0,25 mm)	180° apart not used.	For sizes 42 & 66, 34 Holes based upon a 36 holes pattern. Two holes 180° apart not used.
For size 14, drum furnished without male register.	Tolerance (H ₁₀)	For sizes 32, 52 & 51, 22 Holes based upon a 24 hole pattern. Two holes 180° apart not used.	For sizes 76, 46 Holes based upon a 48 hole pattern. Two holes 180° apart not used.
For size 16, male drum has tapped holes. Female has drilled holes. See VC510	14 thru 51 +0.003/-0.000 in (+0,08/-0,00 mm)		See Form VC 510 for male and female register drums.
	60 thru 76 +0.005/-0.000 in (+0,13/-0,00 mm)		
Tolerance (H ₁)	For sizes 16-28,	For sizes 38 & 46, 30 Holes based upon a 32 hole pattern. Two holes 180° apart not used.	
+0.000/-0.010 in	14 Holes based upon a 16 hole pattern. Two holes		

Airflex® VC Mounting Components

Form VC-516 — Drum Hubs — Wide Sizes

— Dimensional and Technical Data

Section B



Size	Hub Part Numbers for Single Drums		Dual Drums	
	Thru Holes	Tapped Holes	Thru Holes	Tapped Holes
14VC1000	411113			
16VC1000	407069	407070	410487	407072
20VC1000	407073	407074	407075	407076
24VC1000	405625	405626	407077	407078
28VC1000	405628	405629	408031	407081
32VC1000	405631	405632	407082	407083
38VC1200	405634	405635	406841	407084
42VC1200	405637	405638	410990	407085
46VC1200	405640	405641	408001	407086
52VC1200	407079	407080	407876	407087
51VC1600	408585		408586	
60VC1600	411500		411691	
66VC1600			413725	
76VC1600			515147	
76VC2000			515147	

ENGLISH		For Single Element				For Dual Element				
Size	D ₄₂ (in)	H ₁₁ (in)	Weight (lb)	Wk ² (lb-ft ²)	D ₇ (in)	H ₁₄ (in)	Weight (lb)	Wk ² (lb-ft ²)	D ₇ (in)	H ₁₄ (in)
14VC1000	0.75	10.25	70	5	7.00	7.50				
16VC1000	0.75	13.00	97	9	5.50	9.50	199	19	10.00	9.50
20VC1000	0.75	16.50	150	21	7.00	10.00	203	32	9.50	11.00
24VC1000	1.00	17.50	215	44	7.50	12.00	271	50	9.50	12.75
28VC1000	1.00	21.50	297	82	8.00	13.00	370	99	10.00	14.00
32VC1000	1.00	22.50	407	127	9.50	14.50	574	185	12.00	16.50
38VC1200	1.00	28.50	521	236	10.00	15.50	806	368	13.00	18.50
42VC1200	1.00	32.50	677	378	11.00	16.50	1233	653	17.00	20.00
46VC1200	1.25	36.50	813	577	11.00	17.00	1316	856	17.00	20.00
52VC1200	1.25	42.00	1125	1000	12.50	18.50	1803	1514	17.00	23.00
51VC1600	1.25	42.00	1475	1150	15.00	20.00	2303	1993	20.00	25.00
60VC1600	1.75	49.00	2526	3034	16.00	26.00	4143	4967	24.00	30.00
66VC1600	2.00	51.50	4940	6760	20.00	34.00	6450	7800	24.00	34.00
76VC1600	2.00	61.50	7100	14970	24.00	38.50	7800	15576	27.00	38.50
76VC2000	2.00	61.50	7100	14970	24.00	38.50	7800	15576	27.00	38.50

SI		For Single Element				For Dual Element				
Size	D ₄₂ (mm)	H ₁₁ (mm)	Mass (kg)	Wk ² (kg-m ²)	D ₇ (mm)	H ₁₄ (mm)	Mass (kg)	Wk ² (kg-m ²)	D ₇ (mm)	H ₁₄ (mm)
14VC1000	19	260	32	0,21	178	191				
16VC1000	19	330	44	0,38	140	241	90	0,80	254	241
20VC1000	19	419	68	0,88	178	254	92	1,34	241	279
24VC1000	25	445	97	1,85	191	305	123	2,10	241	324
28VC1000	25	546	135	3,44	203	330	168	4,16	254	356
32VC1000	25	572	184	5,33	241	368	260	7,77	305	419
38VC1200	25	724	236	9,91	254	394	365	15,46	330	470
42VC1200	25	826	307	15,88	279	419	559	27,43	432	508
46VC1200	32	927	368	24,23	279	432	596	35,95	432	508
52VC1200	32	1067	510	42,00	318	470	817	63,59	432	584
51VC1600	32	1067	668	48,30	381	508	1043	83,71	508	635
60VC1600	44	1245	1144	127,4	406	660	1877	208,6	610	762
66VC1600	51	1308	2238	283,9	508	864	2922	327,6	610	864
76VC1600	51	1562	3217	628,7	610	978	3533	654,2	686	978
76VC2000	51	1562	3217	628,7	610	978	3533	654,2	686	978

Notes:

0.25 in (6 mm) for sizes 66 and 76.

Table data based upon minimum bores.

Clutch Applications

Air Tank Group Selection

Section B

Size		Part Number w/o Axial Lock	Part Number w/Axial Lock	Connection	Rotorseal Assembly	Air Tank Group Standard	Premium
Single	11.5VC500	104601		½	104921	N/A	N/A
Narrow	14VC500	104602		½	104921	N/A	N/A
	16VC600	104603		½	104921	N/A	N/A
	20VC600	104604		½	104907	108702	108602
	24VC650	104605		½	104907	108702	108602
	28VC650	104606		½	104907	108702	108602
	33VC650	104607		¾	104908AA	108703	108603
	37VC650	104608		¾	104908AA	108703	108603
	42VC650	104609		¾	104908AA	108703	108603
Dual	11.5VC500	104610		½	104907	108702	108602
Narrow	14VC500	104611		½	104907	108702	108602
	16VC600	104612		½	104907	108702	108602
	20VC600	104613	104620	½	104907	108702	108602
	24VC650	104614	104621	¾	104908AA	108703	108603
	28VC650	104615	104622	¾	104908AA	108703	108603
	33VC650	104616	104623	1	104909AA	108704	108604
	37VC650	104617	104624	1	104909AA	108704	108604
	42VC650	104618	104625	1¼	104910AA	108705	108605
Single	16VC1000	104680		½	104907	108702	108602
Wide	20VC1000	104681	104700	½	104907	108702	108602
	24VC1000	104682	104701	¾	104908AA	108703	108603
	28VC1000	104683	104702	¾	104908AA	108703	108603
	32VC1000	104684	104703	1	104909AA	108704	108604
	38VC1200	104685	104704	1¼	104910AA	108705	108605
	42VC1200	104686	104705	1¼	104910AA	108705	108605
	46VC1200	104687	104706	1½	105519AA	108706	108606
	52VC1200	104688	104707	1½	105519AA	108706	108606
	51VC1600	104689	104708	1½	105519AA	108707	108607
	60VC1600	104690	104709	1½	105519AA	108707	108607
	66VC1600	108111	108112	1½	105519AA	108707	108607
Dual	16VC1000	104720		¾	104908AA	108703	108603
Wide	20VC1000	104721	104740	1	104909AA	108704	108604
	24VC1000	104722	104741	1	104909AA	108704	108604
	28VC1000	104723	104742	1¼	104910AA	108705	108605
	32VC1000	104724	104743	1¼	104910AA	108705	108605
	38VC1200	104725	104744	1½	105519AA	108706	108606
	42VC1200	104726	104745	1½	105519AA	108707	108607
	46VC1200	104727	104746	1½	105519AA	108707	108607
	52VC1200	104728	104747	1½	105519AA	108708	108608
	51VC1600	104729	104748	1½	105519AA	108708	108608
	60VC1600	104730	104749	1½	105519AA	108708	108608
	66VC1600	Consult Factory	106972	1½	105519AA	108708	108608
	76VC1600	Consult Factory	108082	2	107815AA	108709	108609
	76VC2000	Consult Factory	108120	2	107815AA	108709	108609